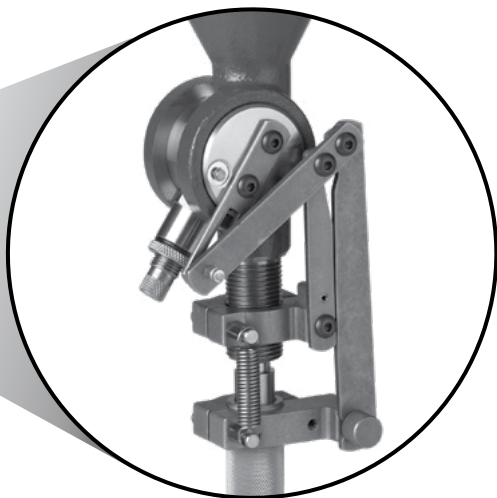
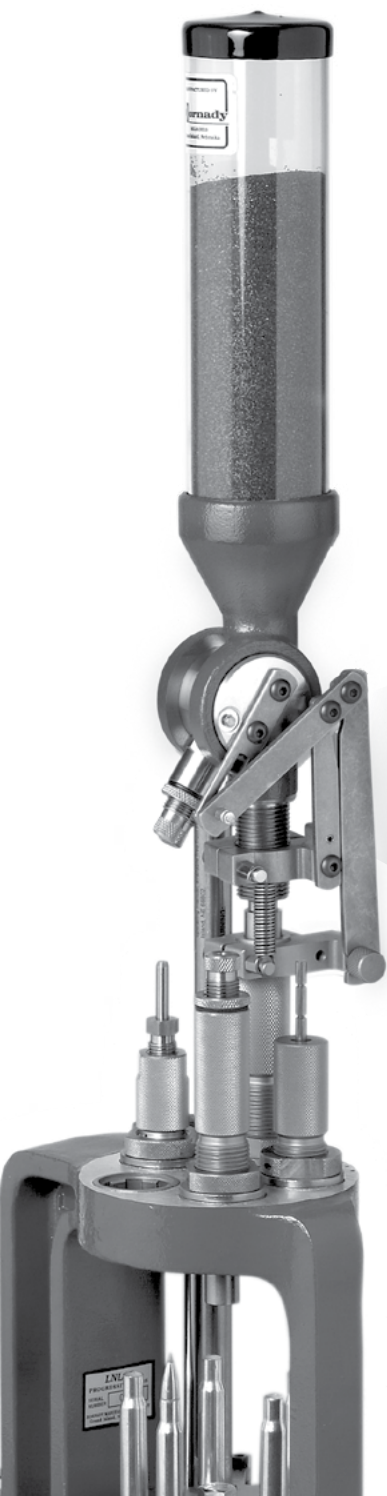
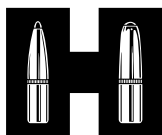


INSTRUCTIONS

Lock-N-Load® Powder Measure and Case Activated Powder Drop



Instructional videos for Hornady® reloading products are available at hornady.com.



Hornady®
Accurate. Deadly. Dependable.

LOCK-N-LOAD® POWDER MEASURE

The Lock-N-Load® Powder Measure comes with the Standard Rotor and Standard Metering Insert installed, with the Pistol Rotor and Pistol Metering Insert packaged separately.

Your Lock-N-Load® Powder Measure has been treated with a rust preventative that must be removed prior to use. We recommend that you clean and degrease all metal parts with Hornady® One Shot® Gun Cleaner and Lube.

TABLE OF CONTENTS

Lock-N-Load Powder Measure

Overview.....	1
Bill of Materials of Lock-N-Load Powder Measure	3
Exploded View of Lock-N-Load Powder Measure	4
Disassemble.....	7
Assemble.....	8
Operate and Adjustment.....	8
Precautions.....	9

WARNING: PRIMERS WILL EXPLODE!

1. Keep away from children.
2. Do not smoke near primers.
3. Primers are designed to explode and will do so when subjected to heat or percussion.
4. Always wear safety glasses when handling primers.
5. **DO NOT** force primers. All primers in the near vicinity of an exploding primer will usually also detonate violently. Do not store or handle primers in bulk.
6. For identification and safety, keep primers in their original protective packaging.
7. An absolute minimum of primers should be kept at the loading operation. Open only one package tray at a time.
8. Do not decap live primers.
9. Never attempt to seat, or reseal, a primer in a loaded round.

CASE ACTIVATED POWDER DROP

The Case Activated Powder Drop helps make reloading faster and easier than ever before. It automatically activates and dispenses a charge with every pull of the handle, but only when a case is present in the station. Plus, it works with Lock-N-Load® bushings. (You can remove and change Hornady powder measures with a quick turn, without changing adjustments.) The Case Activated Powder Drop unit can be used ONLY on the Hornady Lock-N-Load® Powder Measure.

Before using, disassemble and carefully clean the inside surfaces of the drop tube, measure adapter and powder sleeves. Rust preventative oil was applied at the factory to protect the parts during shipment and must be removed before reloading. Brake cleaner works well to remove the oil.

TABLE OF CONTENTS

Case Activated Powder Drop

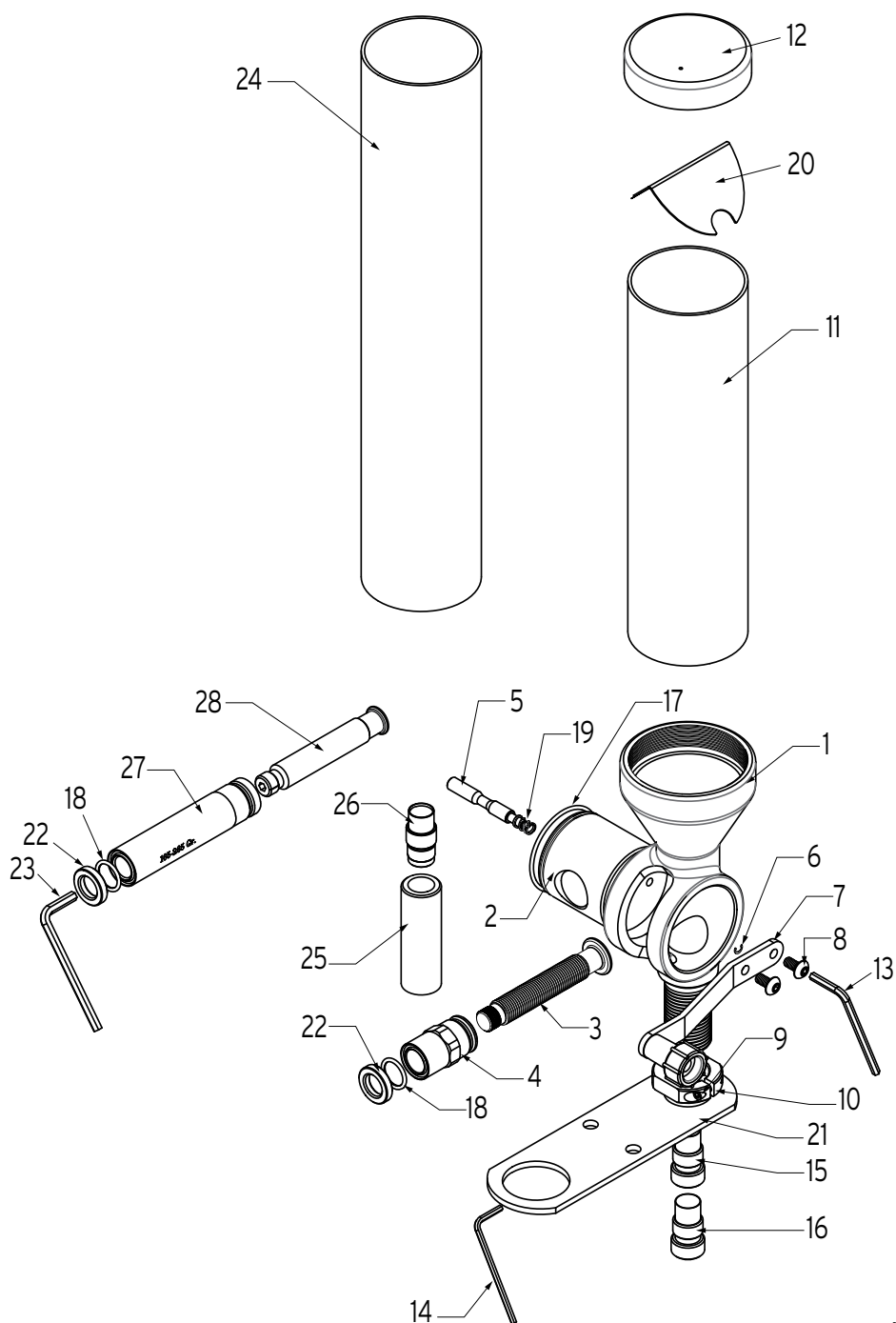
Overview	2
Bill of Materials for Case Activated Powder Drop.....	5
Exploded view for Case Activated Powder Drop	6
Assembling the Case Activated Powder Drop Rotor Arm	10
Upper Bracket Assembly	10
Drop Tube Installation.....	11
Installing the Case Activated Powder Drop (Lower Assembly).....	12
Final Powder Measure Assembly.....	13
Case Activated Powder Drop Adjustment.....	14

POWDER MEASURE BILL OF MATERIALS

Item No.	Production Part Number	Qty.	Description
1	392740	1	POWDER MEASURE BODY
2	392741	1	ROTOR
3	392743	1	PLUNGER
4	392742	1	SLEEVE, ADJUSTING
5	392744	1	BUTTON
6	392748	1	C-CLIP, FOR 5/32" O.D.
7	392752	1	HANDLE
8	392719	1	BHCS, 10-32 x 3/8
9	390200	1	SOCKET HEAD CAP SCREW 5-40 X 3/8"
10	044000	1	LOCK RING
11	398520	1	HOPPER TUBE
12	170405	1	POWDER HOPPER CAP
13	390653	1	1/8" ALLEN WRENCH SHORT ARM
14	390656	1	3/32 ALLEN WRENCH SHORT ARM
15	390701	1	DROP TUBE LARGE
16	390702	1	DROP TUBE SMALL
17	392766	1	O-RING, #029, BUNA
18*	480083	2	O-RING, #112
19	392768	1	.24 OD X.38 L COMPRESSION SPRING
20	480027	1	POWDER BAFFLE
21	392760	1	MOUNTING BRACKET
22*	392764	2	LOCK NUT
23*	390036	1	5/32" ALLEN WRENCH SHORT ARM
24*	398521	1	POWDER MEASURE HOPPER TUBE, HIGH CAPACITY
25*	392775	1	TUBE
26*	392777	1	ADAPTER
27*	392779	1	BODY, 165-265
28*	392780	1	PLUNGER, HIGH CAPACITY

(*)'s are for 50 BMG Powder Measure - Quantity 1

POWDER MEASURE EXPLODED VIEW



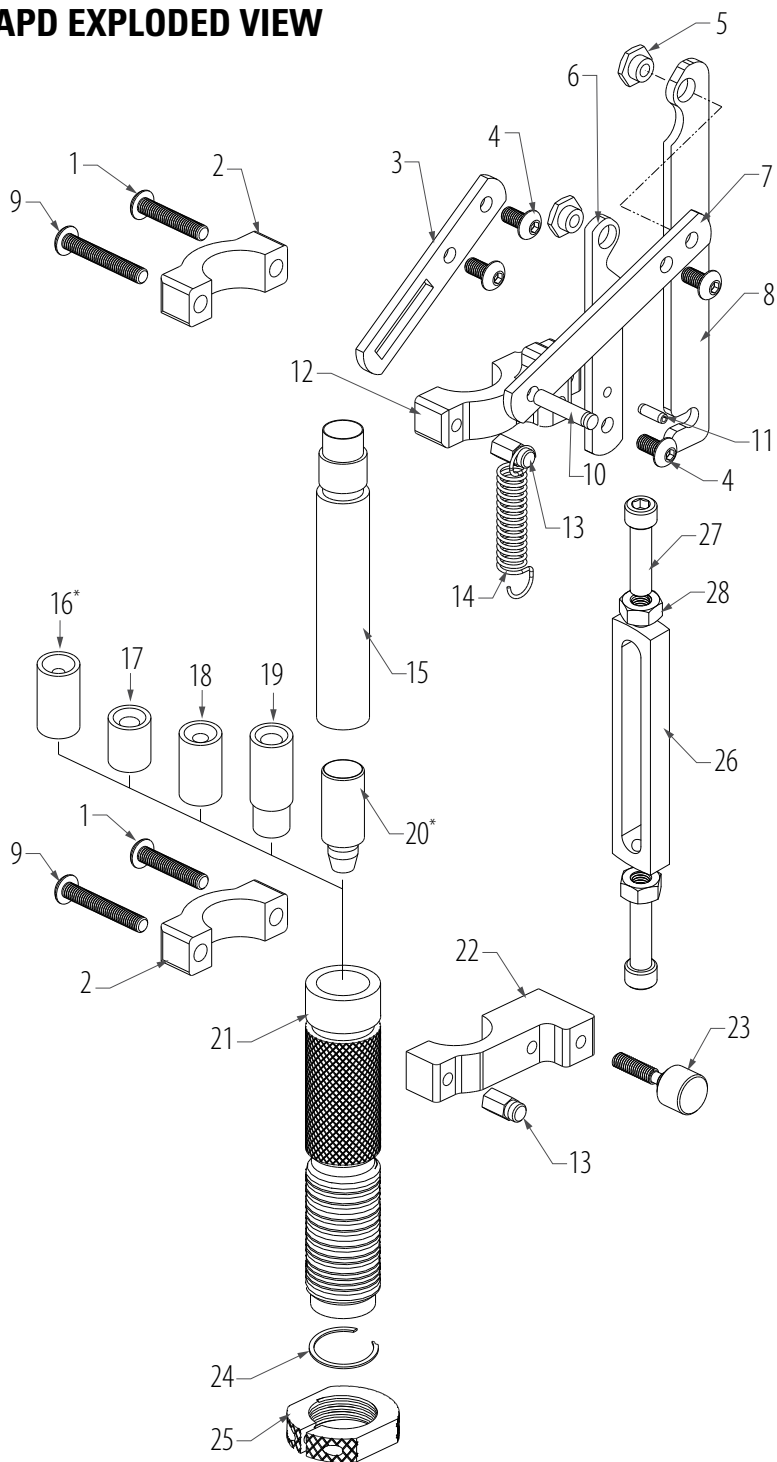
CASE ACTIVATED POWDER DROP (CAPD)

BILL OF MATERIALS

Item No.	Production Part Number	Qty.	Description
1	392721	4	BHSCS 10-32 X 1.00
2	392708	2	MOUNTING CLAMP
3	392710	1	ROTOR ARM
4	392719	5	BHSCS 10-32 X 3/8
5	392723	2	SHOULDER NUT
6	398735	1	PIVOT
7	398737	1	DRIVE LINK
8	398736	1	MEASURE LINK
9	398742	2	BHSCS 10-32 X 1.25
10	392717	1	GROOVE PIN 3/16 X 7/8
11	392718	1	SPRING PIN 1/8 X 3/8
12	392707	1	UPPER BRACKET
13	398739	2	SPRING NUT
14	398738	1	RETURN SPRING
15	392705	1	DROP TUBE
16*	392703	1	17 CAL. SLEEVE
17	392701	1	#1 POWDER SLEEVE
18	392702	1	#2 POWDER SLEEVE
19	392700	1	PISTOL POWDER SLEEVE
20*	290040	1	.355 POWDER THRU EXPANDER
20*	290041	1	.357 POWDER THRU EXPANDER
20*	290042	1	.400 POWDER THRU EXPANDER
20*	290043	1	.430 POWDER THRU EXPANDER
20*	290044	1	.451/.452 POWDER THRU EXPANDER
20*	290045	1	.475 POWDER THRU EXPANDER
20*	290048	1	.500 POWDER THRU EXPANDER
21	392704	1	MEASURE ADAPTER
22	392706	1	LOWER BRACKET
23	398741	1	LOCKING BOLT
24	392722	1	RETAINING RING
25	044000	1	LOCK RING
26	290049R	1	PTX POWDER MEASURE STOP RAW
27	390137	2	SHCS 1/4-28 X 1
28	399240	2	NUT, HEX 1/4-28

* Sold Separately

CAPD EXPLODED VIEW



LOCK-N-LOAD POWDER MEASURE

To Disassemble for Cleaning:

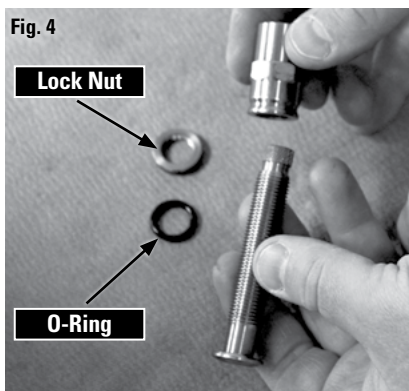
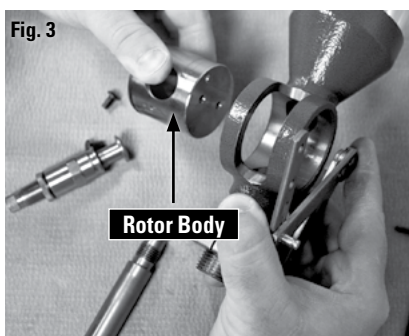
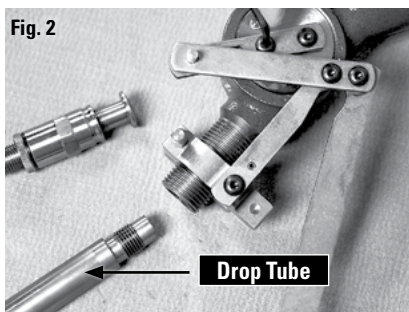
- Set the Rotor with the Metering Unit perpendicular to the axis of the Body, press the Push Button and hold it down while removing the Metering Unit (Fig. 1).

NOTE: Do NOT remove push button. It is permanently installed and does not need cleaning.

- Remove the Handle, or Rotating Arm from the Powder Measure, by removing the two attaching screws with a 1/8" hex wrench. Unscrew the drop tube (Fig. 2).
- Slide the Rotor out of the Body by pressing gently on the handle side of the Rotor (Fig. 3).

Be careful not to drop or otherwise damage the Rotor while it is out of the Body.

- Remove the Lock Nut, O-Ring and Sleeve from the Metering Plunger. Spray all metal parts liberally with Hornady One Shot Gun Cleaner and Lube. Be sure all rust preventatives are removed (Fig. 4).
- Allow it to dry thoroughly before reassembling.



To Re-assemble after cleaning:

Reverse the procedure described on the previous page.

The Rotor and Body are very closely fit and must be properly aligned to reassemble.

NOTE: *Make sure the rotor is inserted with the push button on the left (assuming powder dispenser body is facing you).*

DO NOT FORCE IT OR IRREPARABLE DAMAGE WILL OCCUR.

To Operate and Adjust:

- Attach the Mounting Bracket to your bench or shelf using two #14 Binding Head Sheet Metal Screws or other suitable hardware. The screws should be approximately 3/4" back from the edge of the bench, and the smaller of the two large holes should be suspended off the bench.
- Place the Powder Measure in the hole of the Mounting Plate, thread the Lock Ring onto the Powder Measure, tighten the Lock Ring to the Mounting Plate and lock it in place with the 3/32" hex wrench, if desired.
- Select the appropriate Drop Tube (the smaller for 20 and 25 caliber, the larger for 6.5 mm and up) and thread it into the bottom of the Powder Measure until it is secure against the internal shoulder. Finger tight is all that is required.
- The Lock Nut and O-ring on the Metering Unit may be adjusted to provide tension on the thread of the Plunger, so as to allow setting it while not allowing unintentional movement in operation. It may be locked in place by tightening when adjustment is achieved.

One revolution of the plunger is .05" travel. With the plunger all the way in, or the capacity set to near zero, the end of the thread and the outer surface of the Lock Nut should be approximately flush.

With the plunger all the way out (roughly 20 turns, 1"), the maximum capacity is approximately 100 grains or 5 grains per turn.

- Once your Metering Unit is set, lock it, label it and store it with the die set to achieve a quick return to the present setting for future loading sessions.

LOCK-N-LOAD POWDER MEASURE PRECAUTIONS:

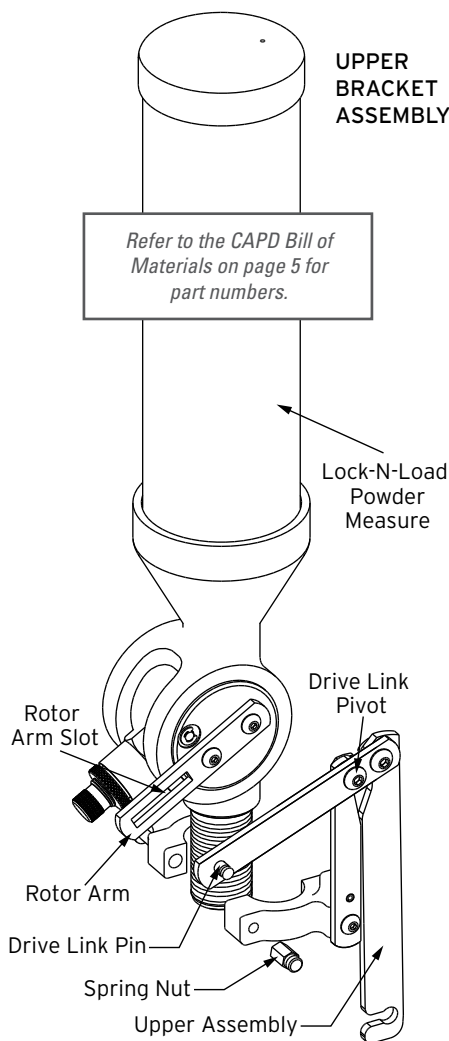
- **Always change the metering units with the handle and the metering unit in the horizontal position, and after you have dropped the charge. If you allow the Handle to fall while changing units, you will drain the Hopper.**
- Be sure you have the proper Lock-N-Load device locked in place, before operating.
- **Always verify your charges** with a scale before loading.
- Any moisture in the unit will cause powder to stick, and charge weights will vary dramatically.

Assembling the Case Activated Powder Drop Rotor Arm

- Reinstall the Rotor with the handle side to the right (metering opening facing you).
- Place the Metering Unit back into the Rotor.
- Attach the Case Activated Powder Drop Rotor Arm (3) to the right side of the Rotor using two Button Head Cap Screws (4).

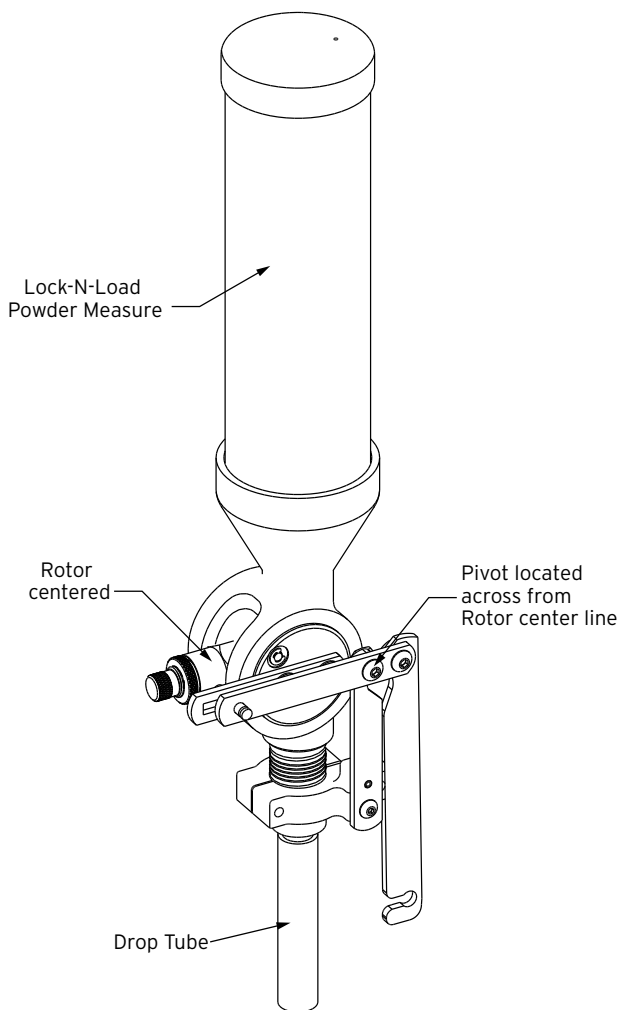
Upper Bracket Assembly

- Slide the Upper Bracket Assembly onto the Powder Measure.
- Engage Drive Link Pin (10) into the Rotor Arm Slot.
- Adjust the position of the Upper Assembly so that the drive link pivot is across from the centerline of the rotor.
- Tighten the two Button Head Cap Screws (1) and (9). The longest screw 10-32 X 1.25 goes in the front hole. Screw on the Spring Nut (13) to the end of the 10-32 X 1.25 screw.



Drop Tube Installation

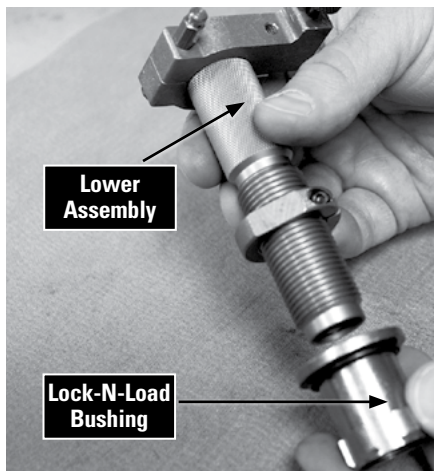
- Screw the Drop Tube into the bottom of the Powder Measure.
- Lubricate the exterior of the Drop Tube with Hornady One Shot Gun Cleaner and Lube or other similar dry lubricant.



Installing the Lower Assembly of the Case Activated Powder Drop

- Screw the Measure Adapter (Lower Assembly) into the reloading press a couple of turns.
- Select the appropriate powder bushing sleeve for your application. (Each sleeve has a shallow countersink on one side, and a deep counter sink on the other.) Insert the bushing, with the deep counter sink facing up, into the top of the measure adapter.
- If using a Drop Thru Expander Powder Sleeve, insert the Expander with the deep countersink facing up, into the top of the Measure Adapter.

The Case Activated Powder Drop comes with three internal powder bushing sleeves. The longest is the pistol powder sleeve (19). Powder sleeve (18) has the smallest inside diameter and works for loading 20 to 270 caliber rifle cases. The third and shortest powder sleeve is for loading 7mm to 45 caliber rifle cases.



Final Powder Measure Assembly

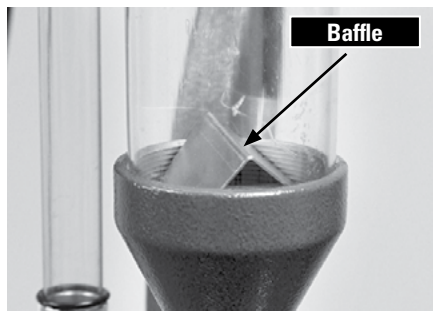
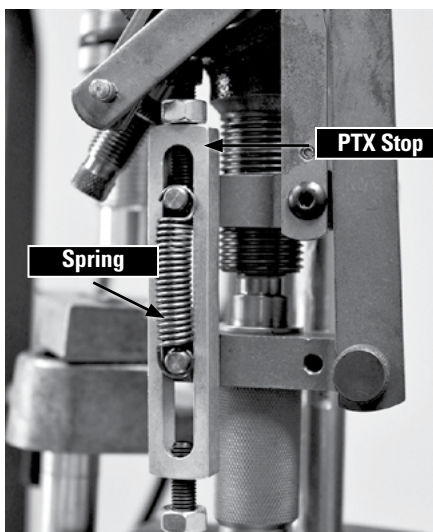
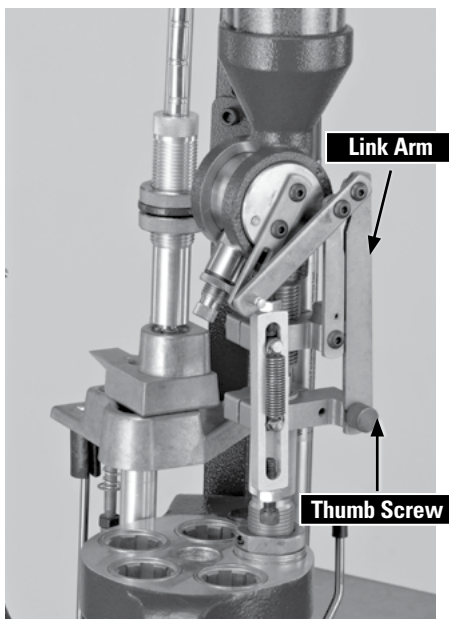
- Insert the Powder Drop Tube into the lower assembly
- Connect the Link Arm (8) to Lower Assembly by sliding the Link over the Thumb Screw (23).
- Tighten the Thumb Screw.

Refer to the CAPD Bill of Materials on page 5 for part numbers.

- Attach PTX Powder Measure Stop.
- Attach Spring (14).

NOTE: PTX Stop is only needed when using a powder through expander (PTX).

- Drop Baffle into Powder Hopper to prevent powder bridging and help produce consistent charges.



Case Activated Powder Drop Adjustments

Insert a case into the shell plate at station 3 of your Lock-N-Load AP and operate the handle to raise the ram to its highest position.

(Refer to your Lock-N-Load AP manual)

Lower the Powder Measure by rotating it clockwise into the press until the Powder Measure Rotor is fully rotated, but not contacting the end of the slot in the Powder Measure Body.

Lower the Ram and attach the Return Spring (14) between the two Spring Pins (13).

Check the adjustment for correct positioning and secure the adjustment with the lock ring.

Note: Clean the Case Activated Powder Drop at the end of each reloading session with a clean dry cloth to prevent a buildup of excess powder. This helps prevent the internal sleeve from sticking and spilling powder around the cartridge cases as they are loaded.

WARRANTY

All Hornady® reloading tools and accessories are warranted against material defects and workmanship.

Hornady® electronic components are covered by a one-year warranty from the date of purchase.

This warranty is void if the product (1) has been damaged by accident or unreasonable use, neglect, improper service or other causes not arising out of defects in material or workmanship; or (2) has been altered or repairs have been made or attempted by other than authorized factory personnel; (3) is used commercially; or (4) has been altered or defaced in any way.

This warranty supersedes all other warranties for Hornady® products either written or oral. No other warranty is expressed or implied.

PRODUCT REGISTRATION AND SERVICE

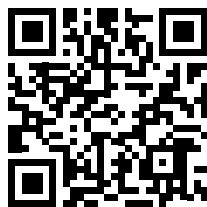
You must register your product to obtain Warranty Service. Complete the registration form at hornady.com/warranties.

TO RECEIVE WARRANTY SERVICE

To report a warranty claim, call Hornady® at 800-338-3220 to request a return authorization number. Returns will not be accepted without prior return authorization by Hornady®.

POST-WARRANTY SERVICE INFORMATION

For issues concerning service after the Limited Warranty expires, contact Hornady® at 800-338-3220.



Scan to register your product to receive the full benefit of its warranty.

PRODUCT SERIAL NUMBER AND REFERENCE INFORMATION

You must register your product in order to obtain warranty service. In the event you should need service for your product, please note the following information:

Serial Number _____

Date Purchased _____

Retailer _____

Hornady Manufacturing Company
P.O. Box 1848, Grand Island, NE 68802-1848
hornady.com/contact