



Hornady®

LAW ENFORCEMENT
& MILITARY

2024 PRODUCT CATALOG





TEST PROTOCOL

BULLET VELOCITY

All trajectories and associated velocities are from SAAMI minimum specification test barrels. An Oehler 83 model 35 P with model 55 skyscreens was used for velocity measurements. Bullet velocity was measured at a distance of 15 feet from the muzzle. Down range velocities shown in the ballistic tables are calculated with an exterior ballistics computer program.

TRAJECTORY TABLES

Trajectories are calculated using a computer program. A (-) sign indicates the trajectory of the bullet is below the line of sight. A (+) sign indicates the trajectory of the bullet is above the line of sight. All trajectories were calculated for standard atmosphere (Sea level, 59° Fahrenheit, 29.92" Hg, .07647 lb./cu ft. density).

10% BALLISTIC GELATIN TESTS

The tissue simulant utilized in FBI ballistic tests is Kind & Knox or Vyse 250-A ordnance gelatin. The mixture is 10%, by weight. Properly calibrated 10% ordnance gelatin is a reliable tissue simulant. Validation of ballistic gelatin is conducted by firing a .177" steel BB at 590 feet per second (fps), plus or minus 15 fps, into the gelatin, resulting in 8.5 centimeters (cm), plus or minus 1 cm, penetration (2.95" - 3.74"). All gelatin was stored at 40°F until just prior to testing. The gelatin was placed 10 feet from the muzzle of the test weapon (unless otherwise noted).

LOCATION:

Hornady® Manufacturing
Ballistic Laboratory
Grand Island, Nebraska

ELEVATION:

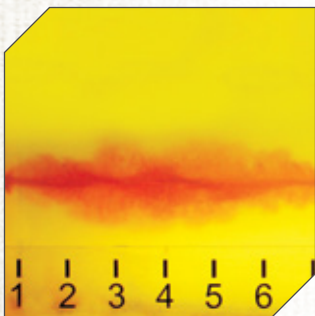
1,800 feet ASL

TEMPERATURE:

74°

All terminal testing is from actual firearms. The gelatin images represent one fired test shot. The data represents an average of five fired test shots. Individual results may vary.

BARRIER SUBSTRATES



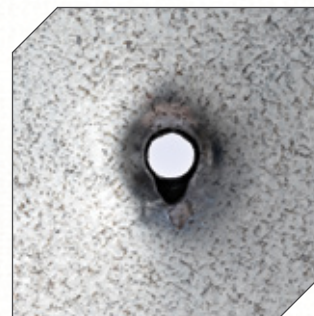
BARE GELATIN

Made in accordance with standard FBI protocol (10% ordnance gelatin).



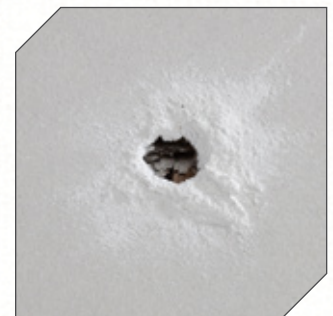
HEAVY CLOTHING

The gelatin block is covered with four layers of clothing: one layer of cotton t-shirt material (approximately 5.25 ounces per yard, 48 threads per inch); one layer of cotton shirt material (approximately 3.5 ounces per yard, 80 threads per inch); one layer of Malden Mills Polartec 200 fleece and one layer of cotton denim (approximately 14.4 ounces per yard, 50 threads per inch).



STEEL*

Two pieces of 20 gauge, hot-rolled steel with a galvanized finish are set three inches apart. The clothing covered gelatin block is placed 18 inches behind the rear most piece of steel. This test event simulates the weakest part of a car door.



WALLBOARD*

Two pieces of ½ inch standard gypsum board are set 3.5 inches apart. The gelatin block is placed 18 inches behind the rear most piece of gypsum. This test event simulates a typical building interior wall.

**Tests 3-6 utilize light clothing (e.g. the cotton t-shirt and dress shirt materials mentioned above), in addition to the mentioned intermediate barrier.*

TABLE OF CONTENTS

BARRIER TESTING

Standard FBI protocol measures the penetration performance of a cartridge's projectile through a series of six tests. Measurements are taken of the depth of penetration to the nearest .25 inch (consistent penetration of 12-18"), expansion of the projectile, and retained weight of the projectile.

Tests One through Six are shot at a distance of 10 feet from the muzzle to the front face of the gelatin block, unless otherwise noted.

For a comprehensive report detailing all ammunition performance, please request the link to download the Hornady® Ammunition Test Report and Application Guide by going to hornadyle.com.



PLYWOOD*

One piece of 3/4 inch "AA" fir plywood is set 18 inches in front of the gelatin block. This test event simulates the resistance of typical wooden doors or construction timbers.



AUTOMOBILE GLASS*

One piece (15"x 18") of A.S.I. 1/4 inch laminated automobile safety glass is set at an angle of 45° to the horizontal and 15° to the side, resulting in a compound angle. The gelatin block is placed 18 inches behind the glass. This test event simulates a shot taken at the driver of a car from the left front quarter of the vehicle.

THE ANATOMY OF A HORNADY® BULLET	2
THE ANATOMY OF A HORNADY® CARTRIDGE	3
CRITICAL DUTY®	4
CRITICAL DEFENSE®	11
HANDGUN TRAINING™	14
223 REM	15
5.56 NATO	18
300 BLACKOUT	21
6MM ARC	24
6.5 CREEDMOOR	26
308 WIN	28
300 WIN MAG / 300 PRC	30
7.62X39	31
338 LAPUA	32
RIFLE	33
SHOTGUN	34
HORNADY SECURITY®	36
TEST BARREL BALLISTICS	47

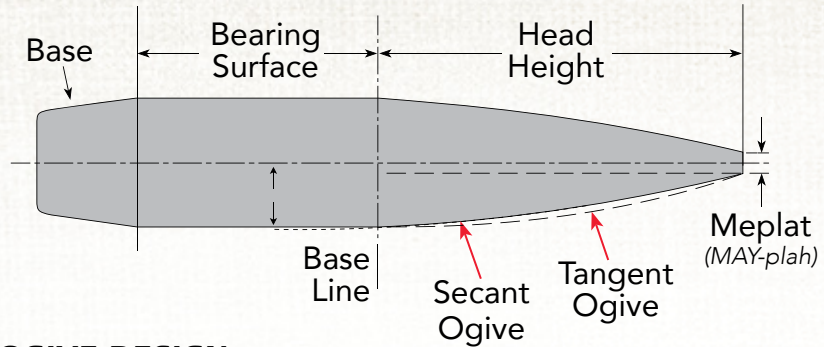


For a complete list of Hornady® patents and trademarks visit our website at hornady.com/support/patents.

©2024 Hornady® Law Enforcement & Military



THE ANATOMY OF A HORNADY® BULLET



SECANT OGIVE DESIGN

Pioneered by Hornady®, this technology broke new ground in ballistic engineering and is now used in bullets for everything from precision shooting to hunting. The secant ogive is a geometrically developed design that creates the most ballistically efficient profile, yet retains the optimum bearing surface. The combination of the slender point and increased bearing surface results in lower drag, increased stability, flatter trajectories, and amazing accuracy.

1. THE MEPLAT

Defined as “the diameter of the end of the tip of the projectile.” Careful attention is paid to the meplat because its diameter and uniformity contribute to the aerodynamic efficiency of the bullet.

2. THE TIP*

Hornady® is recognized as a world leader in bullet tip development. Although small, the tip has a bigger impact on overall performance than perhaps any other portion of the bullet. Innovations in shape and material have led to breakthroughs in accuracy and aerodynamic efficiency. At extended range, the proper tip can reduce vertical stringing, retain downrange velocity and energy, and initiate expansion.

3. THE JACKET

Using advanced manufacturing processes and decades of bullet engineering experience, we precisely control jacket thickness for optimum controlled expansion. Our AMP® bullet jackets* have virtually zero runout and near zero wall thickness variation.

4. THE CORE

Hornady® bullets have three core varieties. First, the traditional swaged lead core provides uniformity and balance for consistent performance and accuracy. Second, the nontraditional lead-free core (NTX®) offers a phenomenal option when non-lead bullets are required. Lastly, our coreless monolithic one-piece copper alloy bullets won't separate and deliver deeper penetration.

5. THE CANNELURE*

The cannelure provides a consistent crimp location, and works with the InterLock® ring to control expansion. Cannelures are also found in select Hornady® bullet lines where semi-automatic or lever gun use is desired.

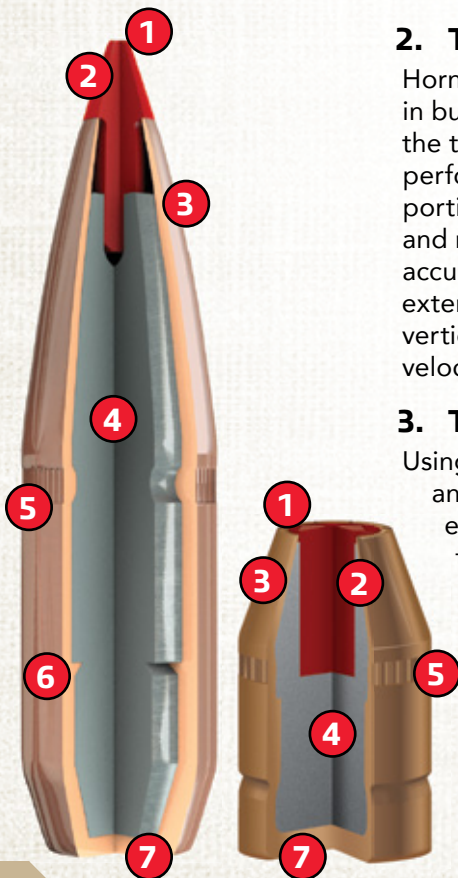
6. THE INTERLOCK® RING*

The raised InterLock® ring is embedded in the bullet's core, ensuring the core and jacket remain locked during expansion to retain mass and increase penetration. This is found in many Hornady® hunting bullets, but is not used in match or varmint offerings.

7. THE BASE

Hornady® bullets primarily come in two styles: boattail and flat base. A boattail design is used to lower the drag at extended range, while the traditional flat base design is often used for shooting at moderate range.

*Not found on all bullets.

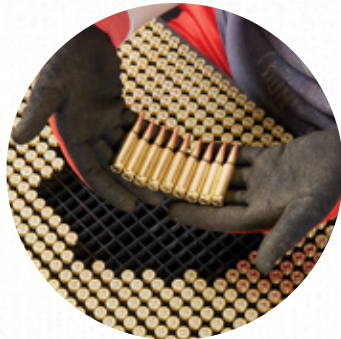




THE ANATOMY OF A HORNADY® CARTRIDGE

Joyce Hornady recognized innovation as the product of a quest for perfection, and a belief that the next big breakthrough was just around the corner. Founded on the principle of making better shooting products, that desire has led to a wave of ingenuity ever since.

We started manufacturing ammunition to give the hunter and non-reloading shooter an extra advantage—handloaded accuracy in a factory-loaded round. We start with Hornady bullets. The same bullets reloaders use for pinpoint accuracy and dependable performance. Every cartridge is loaded with these bullets on our precision presses one after another.



We carefully inspect cartridges before they go into a box. Brass, primers and bullets are carefully screened one last time for flaws, scratches or imperfections. Unless every round is right, we don't sell it.

1. BULLETS

The most important part of a loaded cartridge is the bullet. Used by handloaders around the world, Hornady bullets are legendary because of their dependability and performance.

2. BRASS

Most Hornady ammunition is loaded in Hornady manufactured cases. We carefully manufacture our brass cases for reliable feeding, corrosion resistance, proper hardness and the ability to withstand maximum chamber pressures. We measure for consistently tight wall concentricity and even run our cases through a pressure calibration test to ensure uniform case expansion during firing. Thanks to this kind of manufacturing care, Hornady cases will ensure proper seating of the bullet, both in the case and in the chamber and ultimately yields optimal velocity, repeatable accuracy and numerous reloads.

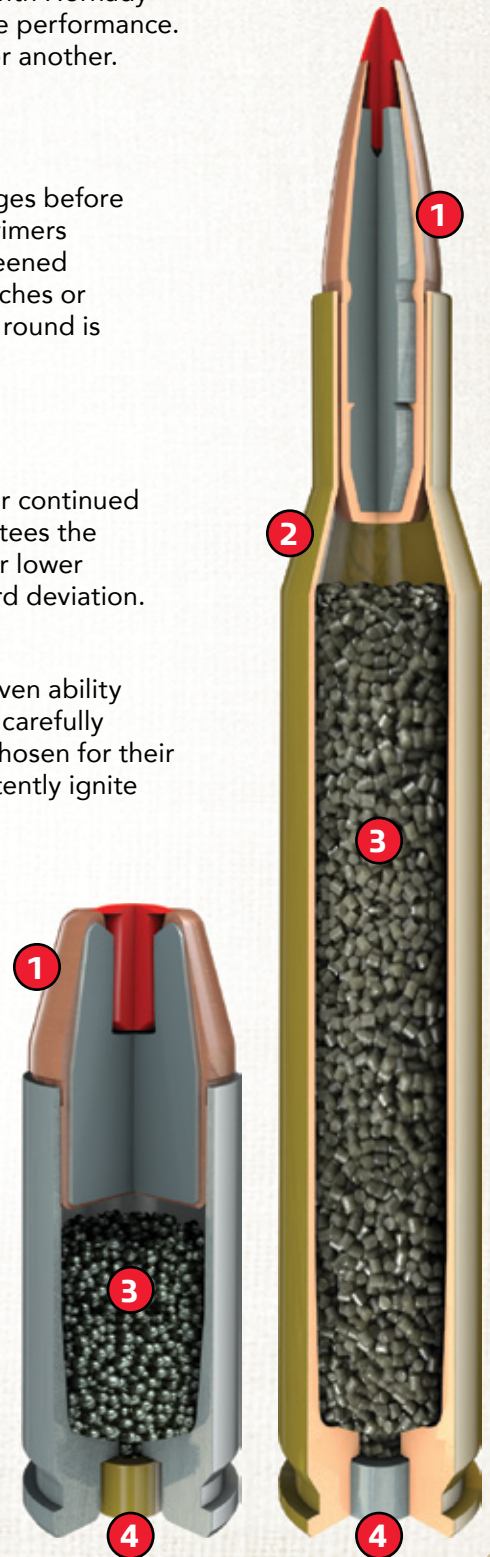
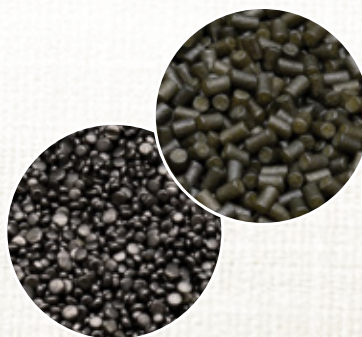
3. POWDER

The powder in each cartridge is specifically chosen, based on performance, pressure, velocity and accuracy. We use only the highest quality powders on the market. Each new lot of powder we use is double-

checked for consistency. Our continued testing and research guarantees the optimum powder choices for lower extreme spread and standard deviation.

4. PRIMERS

Primers are selected for proven ability to work efficiently. They are carefully matched to each load and chosen for their ability to quickly and consistently ignite the entire powder charge.





CRITICAL DUTY®



U.S. Patent Nos. 8,161,885; 8,413,587; 9,121,677

BARRIER BLIND PERFORMANCE

Building on the success of Flex Tip® technology in Hornady® LEVERevolution® and Critical Defense® personal protection ammunition, the rugged FlexLock® bullet and Critical Duty® pistol ammunition is the culmination of a decade of ballistic research and development.

The patented Hornady® Flex Tip® design eliminates clogging and aids bullet expansion. A large mechanical jacket-to-core InterLock® band works to keep the bullet and core from separating for maximum weight retention, excellent expansion and consistent penetration and terminal performance through all FBI test barriers.

The FlexLock® is an “intelligent bullet” that reacts differently depending on the barrier it encounters, delivering “barrier blind” performance after penetrating urban barriers such as plywood, sheet metal and even auto glass.

Bright nickel plated cases eliminate cartridge case tarnish. The highly visible silver nickel simplifies chamber checks in reduced light. Additionally, waterproofing sealant has been applied to the primer pocket and case mouth to prevent moisture intrusion. All Critical Duty® ammunition is loaded with low flash propellant to help preserve night vision in low-light firing.

For the ultimate in tactical terminal ballistic performance through all FBI established urban barriers, choose Critical Duty® ammunition.

Hornady currently has an Indefinite Delivery/Indefinite Quantity (IDIQ) contract with the FBI to provide Critical Duty®, Training, and Frangible ammunition.



SCAN TO
LEARN MORE



FBI TESTED & SELECTED

The FBI completed an extensive evaluation process and selected Hornady® Critical Duty® as its source for 9mm +P and 40 S&W pistol ammunition.

Critical Duty® handgun ammunition is built to meet the needs and requirements of law enforcement and tactical professionals by delivering superior barrier penetration and subsequent terminal performance defined by the FBI Protocol.

1. FLEXLOCK® BULLET

Incorporates two revolutionary Hornady® features: the patented Flex Tip® that initiates consistent expansion while preventing clogging, and the heavy duty InterLock® band that locks the jacket and core together.

2. CANNELURED BULLET WITH CRIMPED CASE

Cannelured bullet with crimped case reduces bullet setback during feeding.

3. INTERLOCK® BAND

This band works to keep the jacket and core from separating for maximum weight retention and proven terminal performance through all FBI test barriers.

4. BULLET CORE

The bullet core is made of high-antimony lead making it extremely tough, delivering controlled expansion for unparalleled terminal performance consistency through all FBI test barriers. It's also more economical than bonded bullets.

5. NICKEL-PLATED CASES

Nickel-plated cases resist corrosion and greatly enhance low-light chamber checks.

6. SEALED PRIMER AND CASE MOUTH

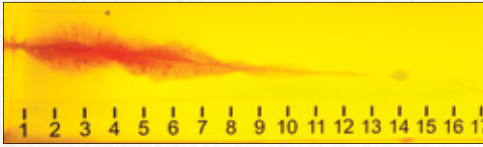
Waterproofing sealant has been applied to the primer pocket and case mouth to prevent moisture intrusion.





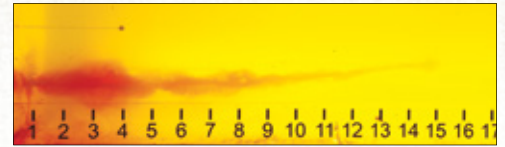
9MM LUGER+P 124 GR. FLEXLOCK® | 3.1" BBL | SIG P365 | NO. 90215

BARE GELATIN



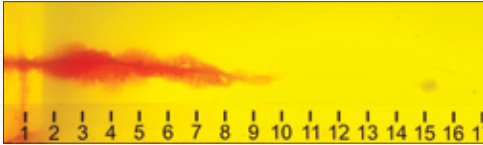
Penetration	Expanded Diameter	Retained Weight	Velocity (FPS)
14.5"	0.54"	100%	1079

WALLBOARD



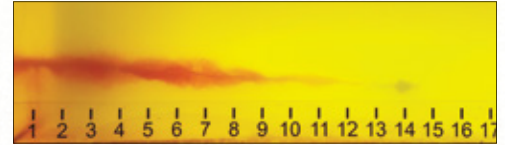
Penetration	Expanded Diameter	Retained Weight	Velocity (FPS)
15.25"	0.55"	100%	1081

HEAVY CLOTHING



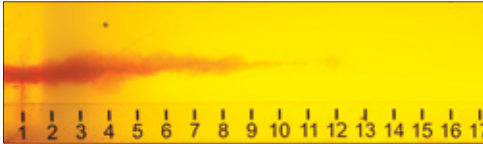
Penetration	Expanded Diameter	Retained Weight	Velocity (FPS)
15.5"	0.51"	100%	1093

PLYWOOD



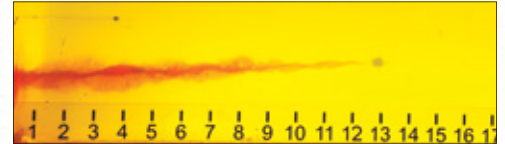
Penetration	Expanded Diameter	Retained Weight	Velocity (FPS)
14.25"	0.53"	100%	1087

STEEL



Penetration	Expanded Diameter	Retained Weight	Velocity (FPS)
12.25"	0.53"	97%	1083

AUTO GLASS

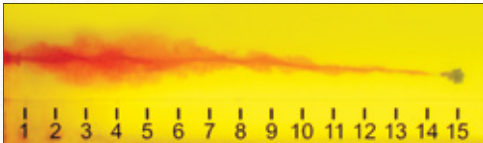


Penetration	Expanded Diameter	Retained Weight	Velocity (FPS)
13.25"	0.41"	72%	1081



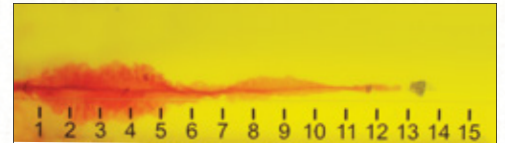
9MM LUGER 135 GR. FLEXLOCK® | 4.5" BBL | GLOCK 17 | NO. 90235

BARE GELATIN



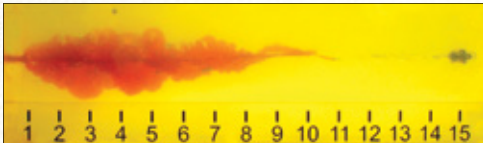
Penetration	Expanded Diameter	Retained Weight	Velocity (FPS)
15.25"	0.56"	100%	1056

WALLBOARD



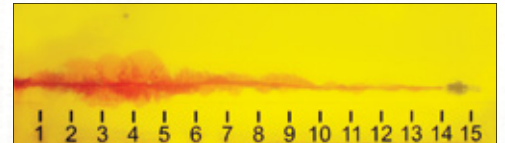
Penetration	Expanded Diameter	Retained Weight	Velocity (FPS)
13.5"	0.58"	100%	1065

HEAVY CLOTHING



Penetration	Expanded Diameter	Retained Weight	Velocity (FPS)
15.5"	0.50"	100%	1066

PLYWOOD



Penetration	Expanded Diameter	Retained Weight	Velocity (FPS)
15.0"	0.51"	100%	1070

STEEL



Penetration	Expanded Diameter	Retained Weight	Velocity (FPS)
13.75"	0.49"	99%	1067

AUTO GLASS



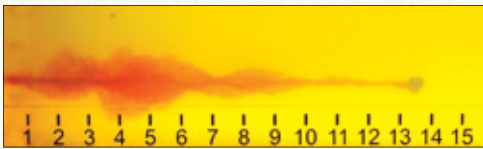
Penetration	Expanded Diameter	Retained Weight	Velocity (FPS)
13.75"	0.41"	67%	1061



Tested and selected by the FBI.

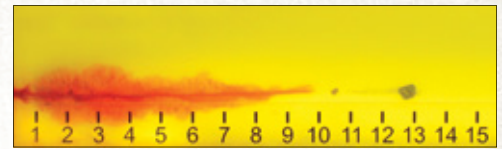
9MM LUGER +P 135 GR. FLEXLOCK® | 4.5" BBL | GLOCK 17 | NO. 90225

BARE GELATIN



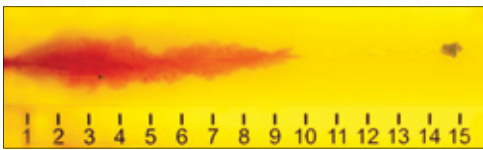
Penetration	Expanded Diameter	Retained Weight	Velocity (FPS)
14.0"	0.60"	100%	1162

WALLBOARD



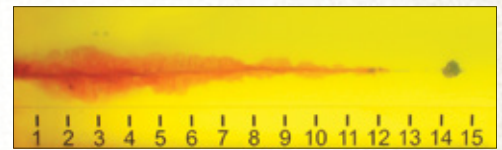
Penetration	Expanded Diameter	Retained Weight	Velocity (FPS)
13.0"	0.62"	100%	1159

HEAVY CLOTHING



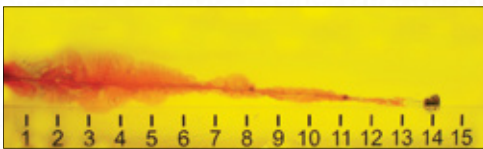
Penetration	Expanded Diameter	Retained Weight	Velocity (FPS)
15.0"	0.55"	100%	1164

PLYWOOD



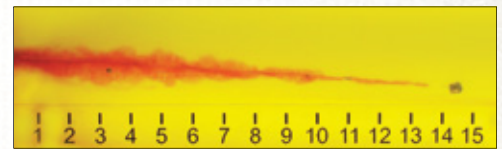
Penetration	Expanded Diameter	Retained Weight	Velocity (FPS)
14.75"	0.57"	100%	1167

STEEL



Penetration	Expanded Diameter	Retained Weight	Velocity (FPS)
14.5"	0.53"	97%	1171

AUTO GLASS

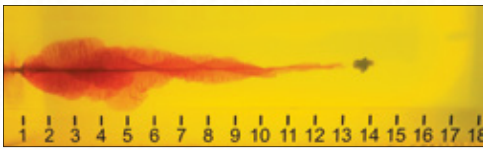


Penetration	Expanded Diameter	Retained Weight	Velocity (FPS)
14.75"	0.42"	69%	1157



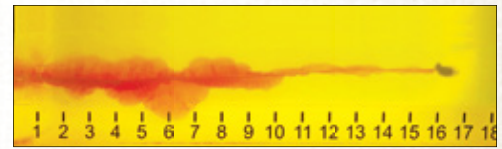
357 SIG 135 GR. FLEXLOCK® | 4.5" BBL | GLOCK 31 | NO. 91295

BARE GELATIN



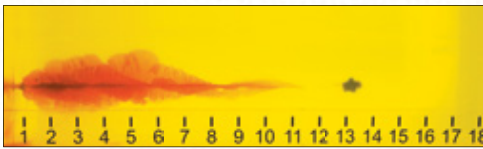
Penetration	Expanded Diameter	Retained Weight	Velocity (FPS)
14.0"	0.58"	99%	1221

WALLBOARD



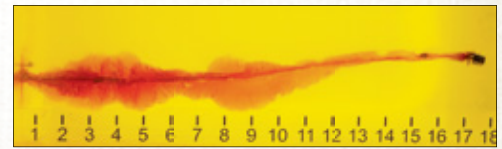
Penetration	Expanded Diameter	Retained Weight	Velocity (FPS)
16.5"	0.42"	100%	1226

HEAVY CLOTHING



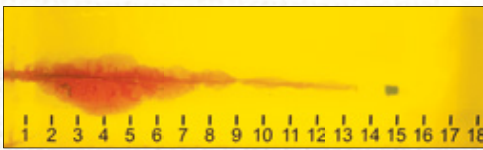
Penetration	Expanded Diameter	Retained Weight	Velocity (FPS)
13.5"	0.56"	99%	1218

PLYWOOD



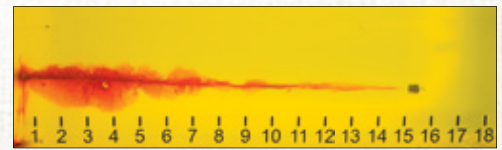
Penetration	Expanded Diameter	Retained Weight	Velocity (FPS)
17.75"	0.53"	100%	1231

STEEL



Penetration	Expanded Diameter	Retained Weight	Velocity (FPS)
15.0"	0.51"	95%	1227

AUTO GLASS

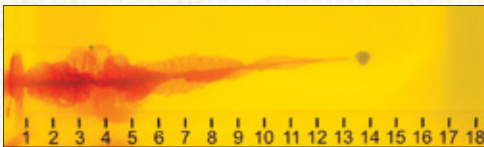


Penetration	Expanded Diameter	Retained Weight	Velocity (FPS)
15.5"	0.49"	77%	1230



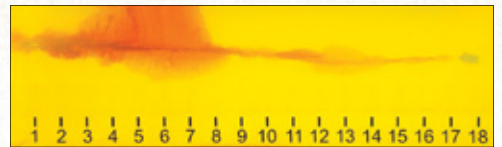
357 MAG 135 GR. FLEXLOCK® | 4.2" BBL | RUGER GP-100 | NO. 90515

BARE GELATIN



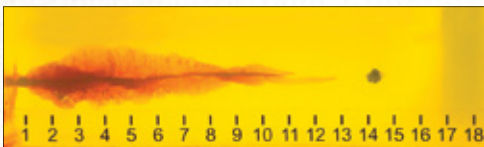
Penetration	Expanded Diameter	Retained Weight	Velocity (FPS)
14.5"	0.58"	99%	1272

WALLBOARD



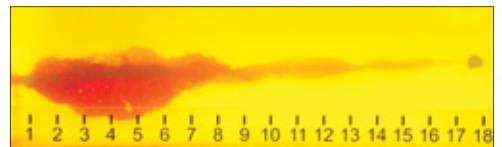
Penetration	Expanded Diameter	Retained Weight	Velocity (FPS)
18.5"	0.44"	100%	1284

HEAVY CLOTHING



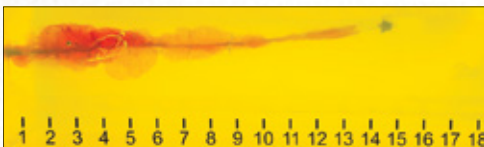
Penetration	Expanded Diameter	Retained Weight	Velocity (FPS)
14.5"	0.57"	99%	1287

PLYWOOD



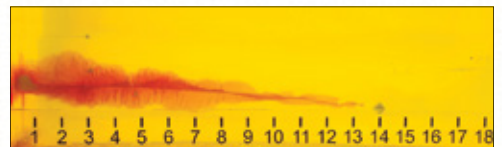
Penetration	Expanded Diameter	Retained Weight	Velocity (FPS)
18.0"	0.54"	95%	1280

STEEL




Penetration	Expanded Diameter	Retained Weight	Velocity (FPS)
14.75"	0.50"	98%	1266

AUTO GLASS



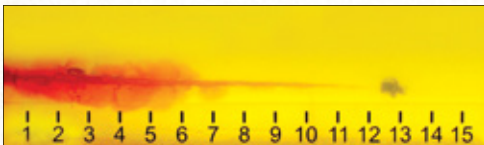
Penetration	Expanded Diameter	Retained Weight	Velocity (FPS)
14.0"	0.46"	73%	1276



 Tested and selected by the FBI.

40 S&W 175 GR. FLEXLOCK® | 4.5" BBL | GLOCK 22 | NO. 91375

BARE GELATIN



Penetration	Expanded Diameter	Retained Weight	Velocity (FPS)
13.5"	0.57"	99%	1067

WALLBOARD



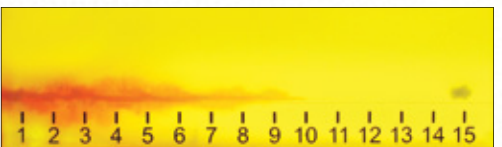
Penetration	Expanded Diameter	Retained Weight	Velocity (FPS)
14.0"	0.63"	99%	1059

HEAVY CLOTHING



Penetration	Expanded Diameter	Retained Weight	Velocity (FPS)
14.5"	0.54"	99%	1062

PLYWOOD



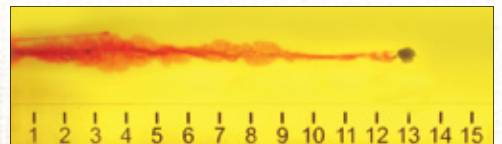
Penetration	Expanded Diameter	Retained Weight	Velocity (FPS)
15.0"	0.52"	99%	1063

STEEL



Penetration	Expanded Diameter	Retained Weight	Velocity (FPS)
13.0"	0.57"	98%	1066

AUTO GLASS

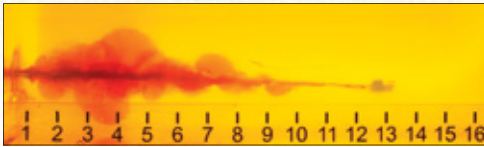


Penetration	Expanded Diameter	Retained Weight	Velocity (FPS)
13.0"	0.61"	79%	1063



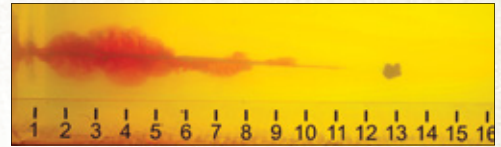
10MM AUTO 175 GR. FLEXLOCK® | 4.6" BBL | GLOCK 20 | NO. 91255

BARE GELATIN



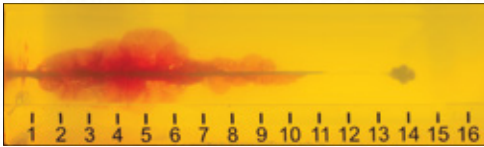
Penetration	Expanded Diameter	Retained Weight	Velocity (FPS)
13.25"	0.66"	99%	1134

WALLBOARD



Penetration	Expanded Diameter	Retained Weight	Velocity (FPS)
13.0"	0.67"	96%	1139

HEAVY CLOTHING



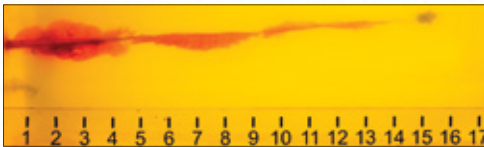
Penetration	Expanded Diameter	Retained Weight	Velocity (FPS)
14.5"	0.63"	99%	1121

PLYWOOD



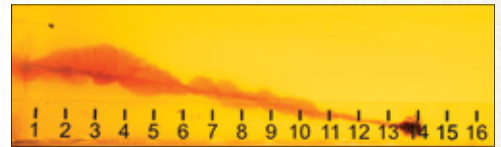
Penetration	Expanded Diameter	Retained Weight	Velocity (FPS)
14.0"	0.68"	97%	1128

STEEL



Penetration	Expanded Diameter	Retained Weight	Velocity (FPS)
15.75"	0.56"	99%	1126

AUTO GLASS

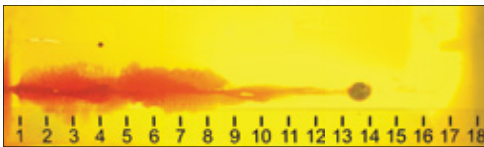


Penetration	Expanded Diameter	Retained Weight	Velocity (FPS)
14.0"	0.55"	80%	1119



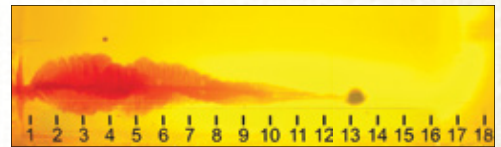
45 AUTO+P 220 GR. FLEXLOCK® | 5" BBL | GLOCK 21 | NO. 90925

BARE GELATIN



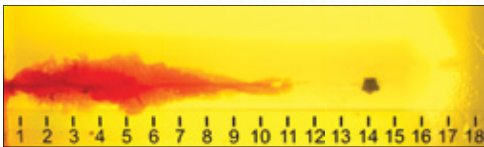
Penetration	Expanded Diameter	Retained Weight	Velocity (FPS)
14.0"	0.71"	99%	969

WALLBOARD



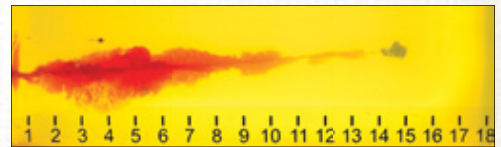
Penetration	Expanded Diameter	Retained Weight	Velocity (FPS)
13.5"	0.70"	99%	979

HEAVY CLOTHING



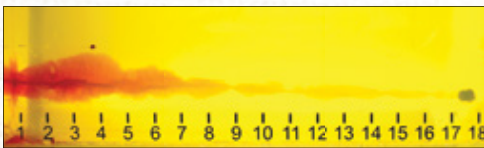
Penetration	Expanded Diameter	Retained Weight	Velocity (FPS)
14.5"	0.69"	99%	976

PLYWOOD



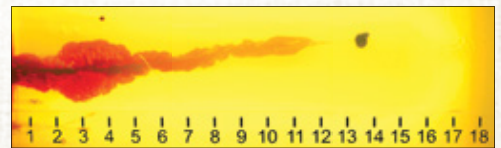
Penetration	Expanded Diameter	Retained Weight	Velocity (FPS)
15.0"	0.66"	99%	978

STEEL



Penetration	Expanded Diameter	Retained Weight	Velocity (FPS)
17.75"	0.54"	99%	973

AUTO GLASS



Penetration	Expanded Diameter	Retained Weight	Velocity (FPS)
13.75"	0.53"	75%	972



THE DIFFERENCE BETWEEN CRITICAL DUTY® & CRITICAL DEFENSE®

CRITICAL DUTY

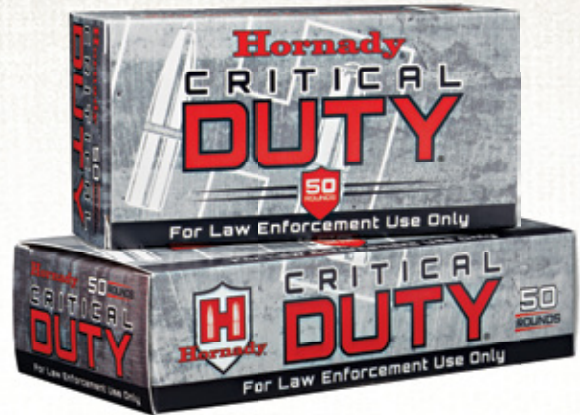
ON-DUTY | PATROL | TACTICAL

Critical Duty® handgun ammunition is built to meet the diverse on-duty requirements of law enforcement and tactical professionals. Critical Duty® ammunition delivers superior barrier penetration and subsequent terminal performance, while still minimizing the liability of over-penetration.

The FlexLock® bullets loaded in all Critical Duty® offerings are rugged, heavy-jacketed bullets that deliver “barrier blind” performance when shot through common urban barriers* (bare gelatin, auto glass, sheet metal, plywood, drywall, and heavy clothing). In addition, Critical Duty® loads are designed to work in ALL handguns. However, these loads deliver optimized performance through the FBI Protocol test.

All Critical Duty® ammunition is loaded in nickel plated cases for improved feeding and increased visibility in low-light situations and features waterproof sealant around the primer and the case mouth to provide superior performance no matter your environment.

**As defined by the “FBI Protocol” handgun ammunition test.*



Critical Duty® ammo features waterproof sealant around the primer.



Critical Duty® ammo features an “H” on the tip.

CRITICAL DUTY® AMMO IS PACKAGED IN 50-COUNT BOXES FOR LAW ENFORCEMENT.

CRITICAL DEFENSE

BACKUP WEAPONS | OFF-DUTY CARRY

Critical Defense® handgun ammunition is ideal for backup weapons, off-duty carry or for those serving in executive protection, undercover operations, or any dedicated close quarters situation.

Critical Defense® provides controlled expansion while reducing the potential of over penetration. The patented FTX® bullet and associated Flex Tip® technology used in Critical Defense® ammunition eliminates the clogging and inconsistent expansion and penetration that often plagues hollow point bullets.

All Critical Defense® ammunition is loaded in nickel-plated cases for improved feeding and increased visibility in low-light situations. Critical Defense® is unaffected by thick, heavy clothing (including denim and leather) and delivers superior controlled expansion with deep wound cavities over a wide range of velocities. Premium low-flash propellants have been specifically tailored for short-barreled handguns to deliver proven performance.





CRITICAL DEFENSE®

Critical Defense® ammunition is ideal for executive protection, undercover operations, close quarters situations, or for use in backup weapons or off-duty carry.

Personal defense ammunition is redefined with Hornady® Critical Defense® ammunition. You may have never thought about the effects of fabric and clothing on the performance of ammo. But clothing — especially heavy clothing — has a lot to do with how the bullet expands upon impact. Conventional hollow point bullets often experience tip clogging as the bullet passes through light and heavy clothing, which diminishes expansion and causes unreliable bullet performance.

Hornady® Critical Defense® ammo eliminates clogging with the use of the patented FTX® (Flex Tip eXpanding) bullet. Upon entering soft tissue, the tip swells and imparts equal pressure across the entire circumference of the bullet cavity. The result is unrivaled bullet expansion and performance.



SCAN TO LEARN MORE



U.S. Patent Nos. 8,161,885; 8,413,587



1. FTX® BULLET TECHNOLOGY

The patented FTX® bullet is unaffected by thick and heavy clothing and delivers superior controlled expansion and large, deep wound cavities over a wide range of velocities.

2. OPTIMIZED PROPELLANTS

Clean burning and efficient propellants reduce recoil in lightweight handguns, and perform consistently at all temperatures. Minimal muzzle flash protects night vision.

3. NICKEL-PLATED CASE

Silver nickel-plated case resists corrosion and greatly enhances low-light chamber checks.

OURS



Flex Tip® technology guarantees reliable performance.

THEIRS



Conventional hollow point bullets perform unreliably when encountering heavy fabric or layers of clothing.



CRITICAL DEFENSE®

All Critical Defense® ballistic gelatin shots were fired from 10 feet.



380 AUTO 90 GR. FTX®
2.75" BBL | RUGER LCP | NO. 90080

HEAVY CLOTHING

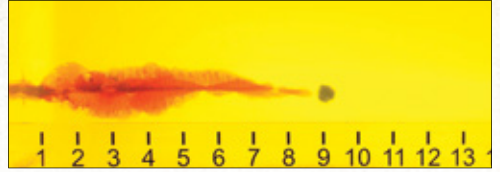


Penetration	Expanded Diameter	Retained Weight	Velocity (FPS)
10.25"	0.51"	98%	1000



9MM LUGER 100 GR. FTX®
CRITICAL DEFENSE® LITE
3" BBL | KAHR MK9 | NO. 90240

HEAVY CLOTHING

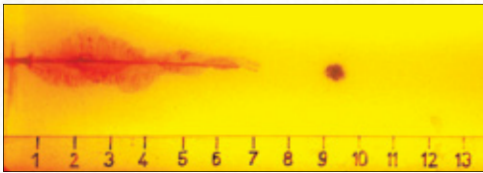


Penetration	Expanded Diameter	Retained Weight	Velocity (FPS)
9.25"	0.57"	99%	1125



9x18 MAKAROV 95 GR. FTX®
3.75" BBL | MAKAROV M | NO. 91000

HEAVY CLOTHING

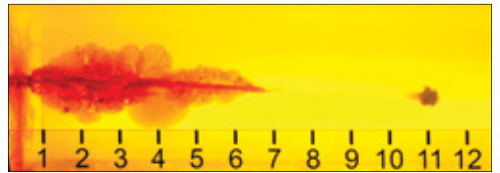


Penetration	Expanded Diameter	Retained Weight	Velocity (FPS)
9.75"	0.57"	100%	1000



9MM LUGER 115 GR. FTX®
3" BBL | KAHR MK9 | NO. 90250

HEAVY CLOTHING



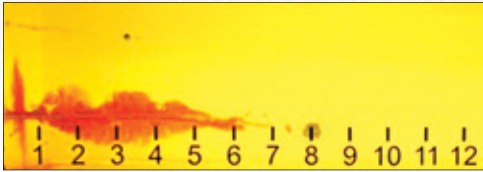
Penetration	Expanded Diameter	Retained Weight	Velocity (FPS)
11.25"	0.55"	100%	1140





**38 SPL 90 GR. FTX®
CRITICAL DEFENSE® LITE**
1 $\frac{7}{8}$ " BBL | SMITH & WESSON 637 | NO. 90300

HEAVY CLOTHING

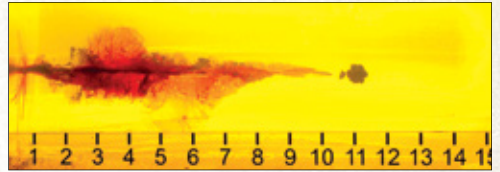


Penetration	Expanded Diameter	Retained Weight	Velocity (FPS)
8.25"	0.54"	98%	1010



40 S&W 165 GR. FTX®
3" BBL | SPRINGFIELD XD 40C | NO. 91340

HEAVY CLOTHING

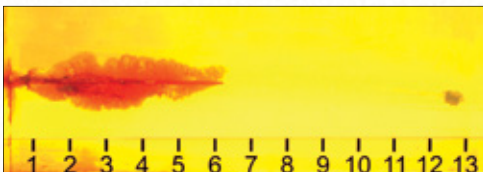
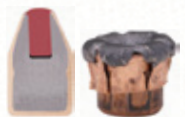


Penetration	Expanded Diameter	Retained Weight	Velocity (FPS)
11.5"	0.68"	100%	1045



38 SPL 110 GR. FTX®
1 $\frac{7}{8}$ " BBL | SMITH & WESSON 637 | NO. 90310

HEAVY CLOTHING

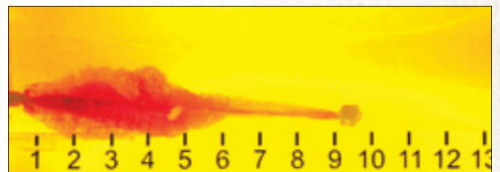


Penetration	Expanded Diameter	Retained Weight	Velocity (FPS)
13.0"	0.50"	100%	1010



44 SPL 165 GR. FTX®
2 $\frac{1}{2}$ " BBL | SMITH & WESSON 329 PD | NO. 90700

HEAVY CLOTHING

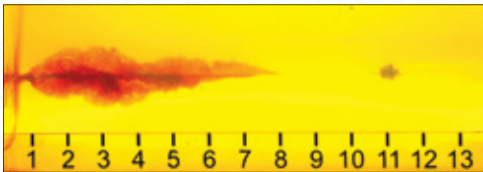


Penetration	Expanded Diameter	Retained Weight	Velocity (FPS)
9.75"	0.70"	99%	900



38 SPL+P 110 GR. FTX®
1 $\frac{7}{8}$ " BBL | SMITH & WESSON 637 | NO. 90311

HEAVY CLOTHING

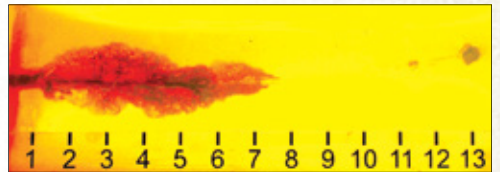


Penetration	Expanded Diameter	Retained Weight	Velocity (FPS)
11.25"	0.54"	99%	1090



45 AUTO 185 GR. FTX®
3" BBL | SPRINGFIELD EMP | NO. 90900

HEAVY CLOTHING

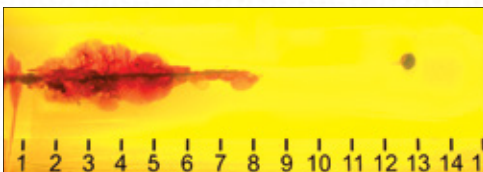


Penetration	Expanded Diameter	Retained Weight	Velocity (FPS)
13.75"	0.66"	99%	1000



357 MAG 125 GR. FTX®
3" BBL | SMITH & WESSON 686 | NO. 90500

HEAVY CLOTHING



Penetration	Expanded Diameter	Retained Weight	Velocity (FPS)
13.0"	0.61"	100%	1500



45 COLT 185 GR. FTX®
3" BBL | TAURUS JUDGE | NO. 92790

HEAVY CLOTHING



Penetration	Expanded Diameter	Retained Weight	Velocity (FPS)
11.25"	0.74"	99%	910



HANDGUN TRAINING™

Hornady® Training™ ammunition provides a cost effective firearms training alternative to the standard TAP® and Critical Duty® loads. Loaded with proven propellants, coupled with high quality bullets, cases, and primers, Hornady® Training™ ammunition is designed to deliver point of aim / point of impact performance comparable to our TAP® and Critical Duty® offerings. Hornady® Training™ Ammunition - an economical, high quality solution for Law Enforcement training.



9MM LUGER 90 GR. FRANGIBLE TRAINING™

BRASS CASE | NO. 90230

4" Test bbl	Muzzle	50 yd	100 yd
Velocity (fps)	1300	1124	1011
Energy (ft lbs)	338	253	204

9MM LUGER 115 GR. FMJ TRAINING™

BRASS CASE | NO. 90269

4" Test bbl	Muzzle	50 yd	100 yd
Velocity (fps)	1135	1032	959
Energy (ft lbs)	329	272	235

9MM LUGER 135 GR. CRIMP LOCK TRAINING™

BRASS CASE | NO. 90222

4" Test bbl	Muzzle	50 yd	100 yd
Velocity (fps)	1010	960	918
Energy (ft lbs)	306	276	253

9MM LUGER 135 GR. FMJ TRAINING™

BRASS CASE | NO. 90238

4" Test bbl	Muzzle	50 yd	100 yd
Velocity (fps)	1010	960	918
Energy (ft lbs)	306	276	253

357 SIG 90 GR FRANGIBLE TRAINING™

BRASS CASE | NO. 91285

5" Test bbl	Muzzle	50 yd	100 yd
Velocity (fps)	1440	1209	1056
Energy (ft lbs)	414	292	223

357 SIG 135 GR® FMJ TRAINING™

BRASS CASE | NO. 91298

5" Test bbl	Muzzle	50 yd	100 yd
Velocity (fps)	1210	1091	1008
Energy (ft lbs)	439	357	305

40 S&W 125 GR. FRANGIBLE TRAINING™

BRASS CASE | NO. 91319

4" Test bbl	Muzzle	50 yd	100 yd
Velocity (fps)	1210	1069	977
Energy (ft lbs)	406	317	265

40 S&W 175 GR. FMJ TRAINING™

BRASS CASE | NO. 91374

4" Test bbl	Muzzle	50 yd	100 yd
Velocity (fps)	1010	948	899
Energy (ft lbs)	396	350	314

45 AUTO 145 GR. FRANGIBLE TRAINING™

BRASS CASE | NO. 90931

5" Test bbl	Muzzle	50 yd	100 yd
Velocity (fps)	1130	974	878
Energy (ft lbs)	411	305	248

45 AUTO 220 GR. FMJ TRAINING™

BRASS CASE | NO. 90924

5" Test bbl	Muzzle	50 yd	100 yd
Velocity (fps)	900	863	829
Energy (ft lbs)	396	363	336



223 REM

TAP PATROL®

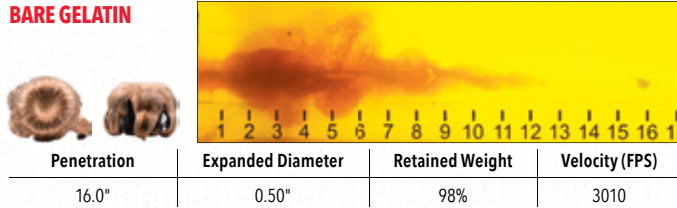
TAP Patrol® is specifically designed to provide consistent and reliable performance through the FBI protocol when fired through 14.5" – 16" barreled 1:7" – 1:9" twist patrol rifles. The lead free bullet features a flat polymer tip, which allows it to provide "barrier blind" performance ensuring consistent penetration depths. The flat tip design ensures the bullet will not plug with material from the barriers and ensures feeding through the wide variety of patrol rifle platforms. TAP Patrol® ammunition is loaded with temperature stable, low flash propellant designed to work when you do.



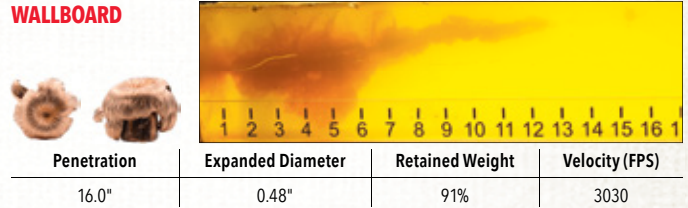
223 REM 53 GR. TAP PATROL® | 16" BBL | COLT 6920 | NO. 80295 | LEAD FREE

Application: Entry, Patrol/Duty | Meets FBI Protocol*

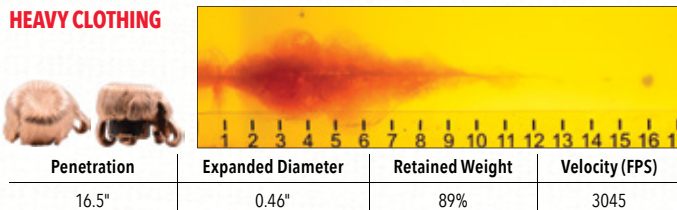
BARE GELATIN



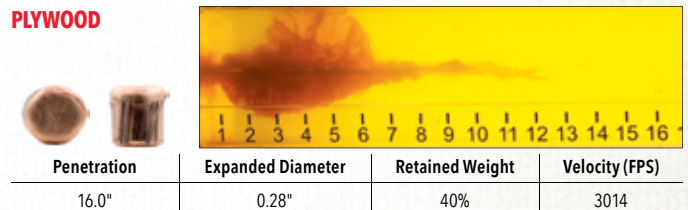
WALLBOARD



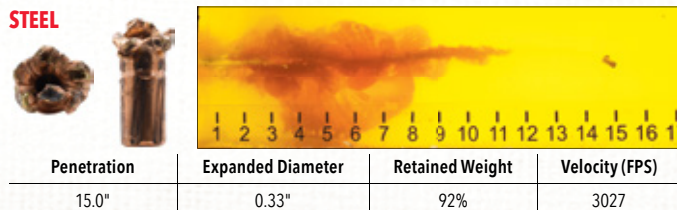
HEAVY CLOTHING



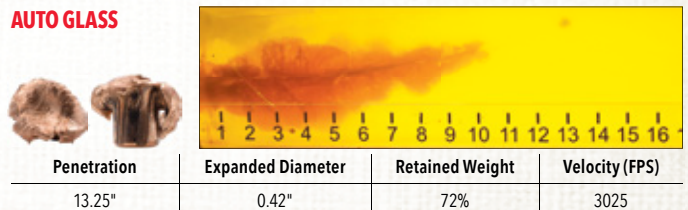
PLYWOOD



STEEL



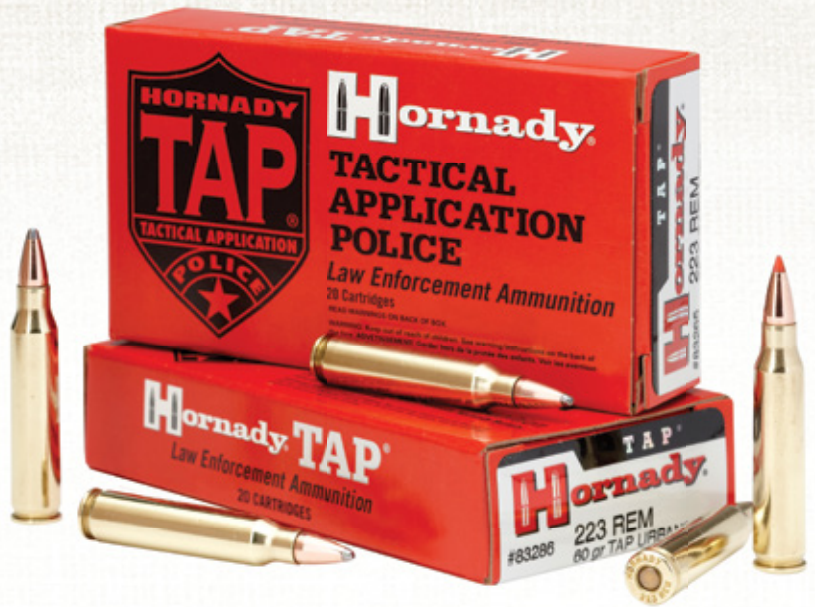
AUTO GLASS





223 REM

Hornady® 223 Rem TAP® loads are a unique offering to law enforcement professionals that combine reliable functioning with consistent performance, low muzzle signature, and exceptional accuracy in cannellured and crimped 53, 55, 60 and 62 gr. bullets, and a 75 gr. load offering match accuracy. This ammunition features clean burning propellants and enhanced terminal performance. These highly effective bullets will penetrate soft body armor making them an excellent choice for patrol rifle programs and SWAT teams.



223 REM 55 GR. TAP URBAN®

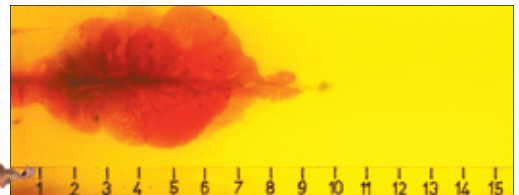
NO. 83276

Application: Entry

The Hornady® 223 Rem 55 gr. TAP Urban® is the preferred choice for use in SBRs, carbines, and rifles when the probability for barrier penetration is low. Rapid expansion provides dramatic wound cavities, massive fragmentation, and prevents over penetration on non-barrier engagements. These factors make this bullet a great choice when collateral risk is high.

24" SAAMI 223 Remington Test Barrel 1:12"	Muzzle	100 yd	200 yd	300 yd	400 yd	500 yd
Velocity (fps)	3220	2837	2485	2159	1859	1589
Energy (ft lbs)	1266	983	754	569	422	308
Trajectory (inches)	-1.5	0	-2.9	-11.4	-27.5	-53.7

BARE GELATIN



Bullet: 55 gr. TAP Urban®
BC: .255 **SD:** .157
Muzzle Velocity: 2981 fps
Barrel: 16"
Twist Rate: 1:9"

Total Penetration: 10"
Max. Cavity: 4.5"
Depth to Max. Cav.: 5"
Entry: 0.5"
Retained Weight: 24.1 gr.

223 REM 60 GR. TAP URBAN®

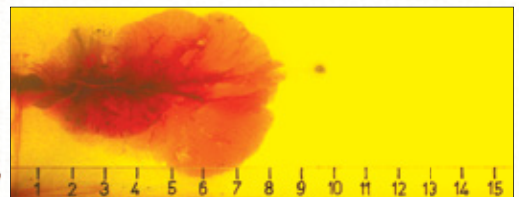
NO. 83286

Application: Entry

The Hornady® 223 Rem 60 gr. TAP Urban® offers high velocity and performance similar to that of other polymer tipped Hornady® 223 bullets. The 60 gr. bullet offers similar retained weight and penetration to the 55 gr. TAP Urban®, and is the heaviest polymer tipped bullet acceptable for 1:12" twist weapons. The heavier 60 gr. bullet transfers more energy to the target for enhanced terminal performance.

24" SAAMI 223 Remington Test Barrel 1:12"	Muzzle	100 yd	200 yd	300 yd	400 yd	500 yd
Velocity (fps)	3110	2749	2417	2108	1823	1567
Energy (ft lbs)	1289	1007	778	592	443	327
Trajectory (inches)	-1.5	0	-3.1	-12.3	-29.3	-56.8

BARE GELATIN



Bullet: 60 gr. TAP Urban®
BC: .265 **SD:** .171
Muzzle Velocity: 2892 fps
Barrel: 16"
Twist Rate: 1:9"

Total Penetration: 9.75"
Max. Cavity: 5.25"
Depth to Max. Cav.: 6.25"
Entry: 0"
Retained Weight: 20.2 gr.

223 REM 62 GR. TAP® BARRIER™

NO. 83285

Application: Patrol/Duty

TAP® Barrier™ turns cover into concealment. Hornady® originally developed this ammunition to meet the requirement for a high-speed, barrier penetrating bullet that could be used for nuclear power plant security. The design of the TAP® Barrier™ round allows the projectile to maintain its structural integrity while punching through barriers, yet still initiates expansion in soft tissue. For patrol carbine programs or any tactical situation where the need is for barrier penetration and terminal soft tissue performance, Hornady® TAP® Barrier™ ammunition is the ideal choice.

24" SAAMI 223 Remington Test Barrel 1:12"	Muzzle	100 yd	200 yd	300 yd	400 yd	500 yd
Velocity (fps)	3050	2699	2375	2073	1796	1546
Energy (ft lbs)	1239	971	751	573	430	319
Trajectory (inches)	-1.5	0	-3.3	-12.8	-30.5	-59.0

223 REM 75 GR. BTHP TAP®

NO. 80265

Application: Precision Rifle

This match accurate load is our heavy TAP® offering in 223 Rem. This load is suitable for a short barreled rifle that has either a 223 Rem or 5.56 NATO chamber. The 75 gr. bullet offers deeper penetration than the 55 gr. and 60 gr. TAP Urban® bullets. The 75 gr. BTHP penetrates with minimal deflection and provides rapid fragmentation, thus delivering more energy to the target. This bullet generates very large and consistent wound cavities, serving as an ideal choice for 223 Rem precision rifle applications.

24" SAAMI 223 Remington Test Barrel 1:12"	Muzzle	100 yd	200 yd	300 yd	400 yd	500 yd
Velocity (fps)	2785	2557	2340	2134	1939	1755
Energy (ft lbs)	1292	1089	912	759	626	513
Trajectory (inches)	-1.5	0	-3.8	-14.1	-31.9	-59.1

223 REM TRAINING

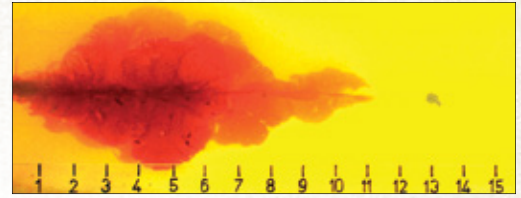
Hornady® Training™ ammunition provides a cost effective firearms training alternative to the standard TAP® and Critical Duty® loads. Loaded with proven propellants, coupled with high quality bullets, cases, and primers, Hornady® Training™ ammunition is designed to deliver point of aim / point of impact comparable to our TAP® and Critical Duty® offerings. Hornady® Training™ Ammunition - an economical, high quality solution for Law Enforcement training.

223 REM 55 GR. SP TRAINING™

BRASS CASE | NO. 80255

24" Test Barrel	Muzzle	100 yd	200 yd
Velocity (fps)	3240	2823	2443
Energy (ft lbs)	1282	973	728
Trajectory (inches)	-1.5	0	-2.9

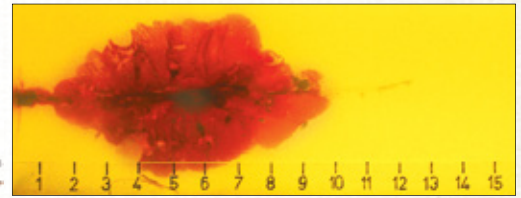
BARE GELATIN



Bullet: 62 gr. TAP® Barrier™
BC: .264 **SD:** .176
Muzzle Velocity: 2840 fps
Barrel: 16"
Twist Rate: 1:9"

Total Penetration: 13.75"
Max. Cavity: 4.5"
Depth to Max. Cav.: 4.75"
Entry: 0.25"
Retained Weight: 43.6 gr.

BARE GELATIN



Bullet: 75 gr. BTHP TAP®
BC: .395 **SD:** .214
Muzzle Velocity: 2542 fps
Barrel: 16"
Twist Rate: 1:7"

Total Penetration: 12.5"
Max. Cavity: 5.25"
Depth to Max. Cav.: 5"
Entry: 1"
Retained Weight: 27.0 gr.

223 REM 55 GR. FMJ TRAINING™

BRASS CASE | NO. 80271

24" Test Barrel	Muzzle	100 yd	200 yd
Velocity (fps)	3240	2837	2468
Energy (ft lbs)	1282	983	744
Trajectory (inches)	-1.5	1.4	0

223 REM 55 GR. FMJ-BT TRAINING™

BRASS CASE | NO. 80275

24" Test Barrel	Muzzle	100 yd	200 yd
Velocity (fps)	3240	2836	2467
Energy (ft lbs)	1282	982	743
Trajectory (inches)	-1.5	0	-2.9



5.56 NATO

TAP PATROL®

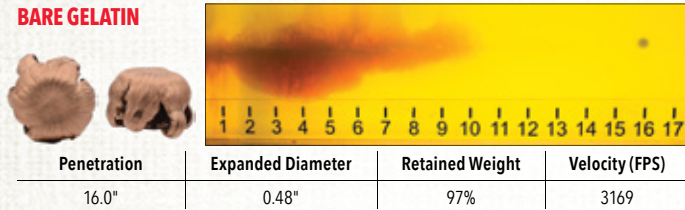
TAP Patrol® is specifically designed to provide consistent and reliable performance through the FBI protocol when fired through 14.5" – 16" barreled 1:7" – 1:9" twist patrol rifles. The lead free bullet features a flat polymer tip, which allows it to provide "barrier blind" performance ensuring consistent penetration depths. The flat tip design ensures the bullet will not plug with material from the barriers and ensures feeding through the wide variety of patrol rifle platforms. TAP Patrol® ammunition is loaded with temperature stable, low flash propellant designed to work when you do.



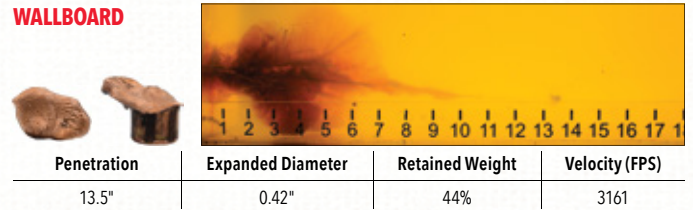
5.56 NATO 53 GR. TAP PATROL® | 16" BBL | COLT 6920 | NO. 81275 | **LEAD FREE**

Application: Entry, Patrol/Duty | Meets FBI Protocol*

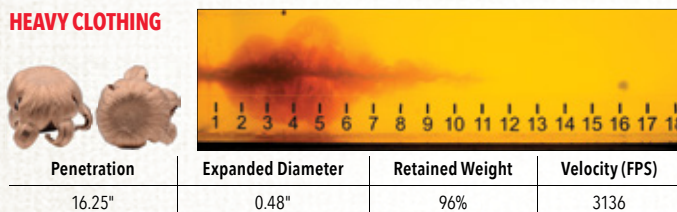
BARE GELATIN



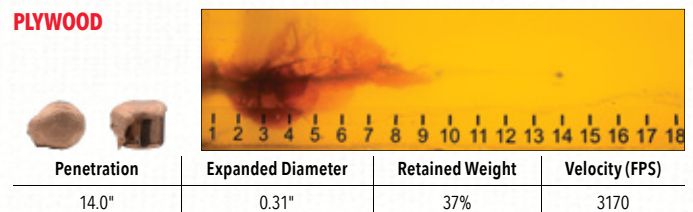
WALLBOARD



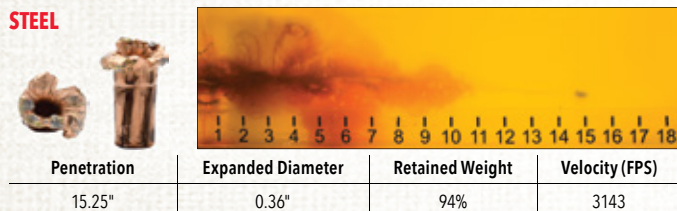
HEAVY CLOTHING



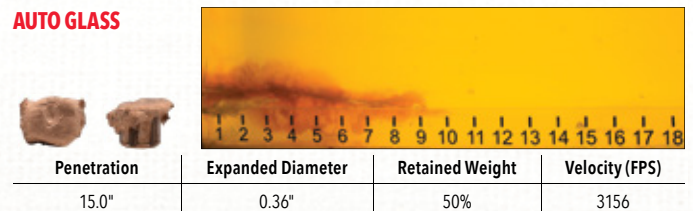
PLYWOOD



STEEL



AUTO GLASS



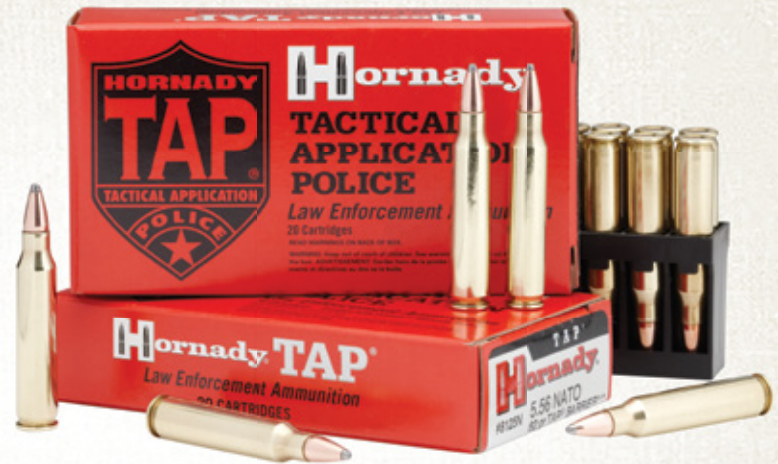


5.56 NATO

Many rifles chambered in 5.56 NATO are not realizing their full potential because departments are shooting 223 Rem ammo. To get all the performance the 5.56 NATO can deliver, the Hornady® 5.56 rounds are tailored to maximize performance.

Your 5.56 NATO chambered rifle was designed to take advantage of the higher pressure of the 5.56 NATO cartridge — higher pressure translates to increased velocity, higher energy and harder-hitting performance.

CAUTION: Firing 5.56 NATO ammunition in 223 Remington chambers will produce a dramatic rise in pressure which increases stress on the weapon, risking wear, permanent damage and/or injury. Please see our Application Guide for full details.



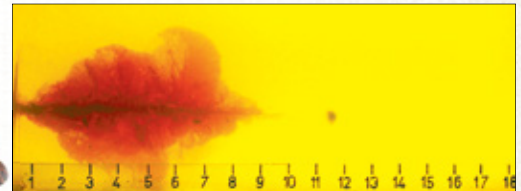
5.56 NATO 62 GR. TAP® BARRIER™ NO. 8125C (50CT)

Application: Patrol/Duty

TAP® Barrier™ turns cover into concealment. Hornady® originally developed this ammunition to meet the requirement for a high-speed, barrier penetrating bullet that could be used for nuclear power plant security. The design of the TAP® Barrier™ round allows the projectile to maintain its structural integrity while punching through barriers, yet still initiates expansion in soft tissue. For patrol carbine programs or any tactical situation where the need is for barrier penetration and terminal soft tissue performance, Hornady® TAP® Barrier™ ammunition is the ideal choice.

20" 5.56x45mm NATO Test Barrel 1:7"	Muzzle	100 yd	200 yd	300 yd	400 yd	500 yd
Velocity (fps)	3085	2725	2393	2085	1801	1546
Energy (ft lbs)	1310	1022	788	598	446	329
Trajectory (inches)	-1.5	0	-3.2	-12.6	-30	-58.2

BARE GELATIN



Bullet: 62 gr. TAP® Barrier™
BC: .264 **SD:** .176
Muzzle Velocity: 2910 fps
Barrel: 16"
Twist Rate: 1:9"

Total Penetration: 11.75"
Max. Cavity: 5.5"
Depth to Max. Cav.: 4.75"
Entry: 0.75"
Retained Weight: 45.1 gr.

5.56 NATO 70 GR. TAP® BARRIER™ | LEAD FREE NO. 81265

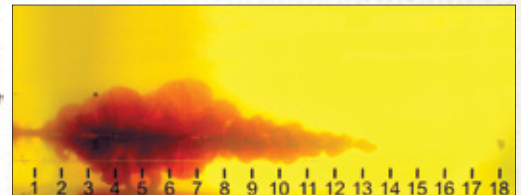
Application: Patrol/Duty | Meets FBI Protocol*

TAP® Barrier™ turns cover into concealment. The 5.56 NATO 70 gr. Barrier™ round is designed to meet the requirements of the FBI Protocol. The monolithic solid bullet is constructed entirely from a premium copper alloy that delivers high weight retention and deep penetration. This bullet is well suited for guns with faster twist rates and is extremely reliable for patrol carbine use or any other situation that may involve vehicles or barricades.

(For use in 1:7" twist SBRs, carbines and rifles or 1:8" twist carbines and rifles.)

20" 5.56x45mm NATO Test Barrel 1:7"	Muzzle	100 yd	200 yd	300 yd	400 yd	500 yd
Velocity (fps)	2900	2637	2389	2154	1934	1728
Energy (ft lbs)	1307	1081	887	721	581	464
Trajectory (inches)	-1.5	0	-3.5	-13.1	-30.3	-56.8

BARE GELATIN



Bullet: 70 gr. TAP® Barrier™
BC: .350 **SD:** .199
Muzzle Velocity: 2652 fps
Barrel: 16"
Twist Rate: 1:7"

Total Penetration: 18"
Max. Cavity: 4.0"
Depth to Max. Cav.: 4.5"
Entry: 0.5"
Retained Weight: 67.6 gr.



5.56 NATO

5.56 NATO 75 GR. BTHP T2 TAP®

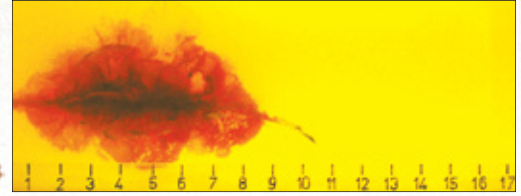
NO. 8126N

Application: Precision Rifle

The T2 bullet profile is specifically designed to optimize function and feeding in M16/M4 variant guns. The cartridge's propellant technology is custom designed to enhance weapon operation, and delivers phenomenal temperature stability. The 75 gr. BTHP T2 bullet is designed to deliver rapid incapacitation upon impact.

20" 5.56x45mm NATO Test Barrel 1:7"	Muzzle	100 yd	200 yd	300 yd	400 yd	500 yd
Velocity (fps)	2885	2626	2382	2151	1934	1731
Energy (ft lbs)	1386	1149	945	771	623	499
Trajectory (inches)	-1.5	0	-3.6	-13.3	-30.5	-57.1

BARE GELATIN



Bullet: 75 gr. BTHP T2 TAP®
BC: .355 **SD:** .214
Muzzle Velocity: 2747 fps
Barrel: 16"
Twist Rate: 1:9"

Total Penetration: 10.5"
Max. Cavity: 5.5"
Depth to Max. Cav.: 5.5"
Entry: 0.75"
Retained Weight: 31.5 gr.

5.56 NATO 75 GR. TAP SBR®

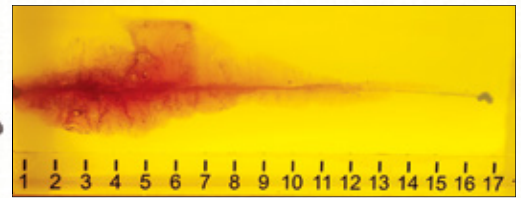
NO. 81295

Application: Entry, Patrol/Duty | Meets FBI Protocol*

Designed specifically for 10.5"-12.5" short-barreled rifles using proprietary propellants and bullet technology from industry leading Critical Duty® FlexLock® bullets. TAP SBR® ammunition provides exceptional performance in suppressed or unsuppressed SBR's. With virtually no flash or residue, TAP SBR® ammunition dramatically reduces sound signature, will not foul or overheat suppressors, delivers uniform velocity and accuracy, and provides controllable rate of fire in automatic platforms.

11.5" 5.56x45mm NATO Test Barrel 1:7"	Muzzle	100 yd	200 yd	300 yd	400 yd	500 yd
Velocity (fps)	2310	1965	1654	1388	1179	1042
Energy (ft lbs)	889	643	456	321	231	181
Trajectory (inches)	-1.5	0	-7.6	-28.0	-66.7	-130.3

BARE GELATIN



Bullet: 75 gr. TAP SBR®
BC: .230 **SD:** .214
Muzzle Velocity: 2201 fps
Barrel: 10.5"
Twist Rate: 1:7"

Total Penetration: 17.0"
Max. Cavity: 4.5"
Depth to Max. Cav.: 4.5"
Entry: 0.50"
Retained Weight: 69.5 gr.

TAP SBR® is the optimum choice for 10.5"-12.5" barreled 5.56 rifles.

5.56 NATO TRAINING

Hornady® Training™ ammunition provides a cost effective firearms training alternative to the standard TAP® and Critical Duty® loads. Loaded with proven propellants, coupled with high quality bullets, cases, and primers, Hornady® Training™ ammunition is designed to deliver point of aim / point of impact comparable to our TAP® and Critical Duty® offerings. Hornady® Training™ Ammunition - an economical, high quality solution for Law Enforcement training.

5.56 NATO 45 GR. FRANGIBLE TRAINING™

BRASS CASE | NO. 81251

20" Test Barrel	Muzzle	100 yd	200 yd
Velocity (fps)	3050	2237	1571
Energy (ft lbs)	929	500	247
Trajectory (inches)	-1.5	0	-5.8

5.56 NATO 55 GR. FMJ TRAINING™

BRASS CASE | NO. 81278

20" Test Barrel	Muzzle	100 yd	200 yd
Velocity (fps)	3240	2837	2468
Energy (ft lbs)	1282	983	744
Trajectory (inches)	-1.5	1.4	0

5.56 NATO 57 GR. JACKETED FRANGIBLE TRAINING™

BRASS CASE | NO. 81261

20" Test Barrel	Muzzle	100 yd	200 yd
Velocity (fps)	3150	2485	1911
Energy (ft lbs)	1256	782	462
Trajectory (inches)	-1.5	0	-4.3

5.56 NATO 75 GR. TAP SBR® TRAINING™

BRASS CASE | NO. 81292

20" Test Barrel	Muzzle	100 yd	200 yd
Velocity (fps)	2310	2105	1911
Energy (ft lbs)	888	738	608
Trajectory (inches)	-1.5	0	-6.4



300 BLACKOUT

The 300 Blackout is perhaps the most versatile cartridge currently available for LE/Military applications. With the ability to provide superior terminal performance in 8"– 16" barrel lengths, it has the ability to support CQB/CQC to Patrol operations. Purpose built bullet designs allow the end user to transition between limited penetration to subsonic or supersonic barrier blind (FBI Protocol) ammunition by simply switching a magazine. 300 Blackout TAP® provides options currently unavailable for any 223/5.56 or 308 SBR/Carbine platform.



300 BLACKOUT 110 GR. TAP URBAN®

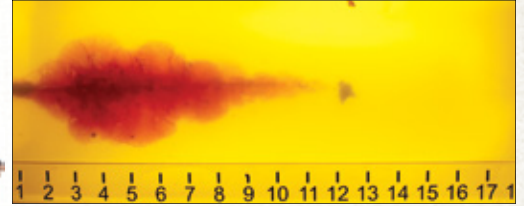
8" BBL | MC6 PDW | NO. 80885

Application: Entry

The Hornady® 300 Blackout 110 gr. TAP Urban® is the preferred choice for use in SBRs, carbines, and rifles when the probability for barrier penetration is low. Rapid expansion provides dramatic wound cavities, massive fragmentation, and prevents over penetration on non-barrier engagements. These factors make this bullet a great choice when collateral risk is high.

16" SAAMI Test Barrel	Muzzle	100 yd	200 yd	300 yd	400 yd	500 yd
Velocity (fps)	2370	2089	1830	1594	1386	1215
Energy (ft lbs)	1372	1066	818	620	469	361
Trajectory (inches)	-1.5	0	-6.5	-23.5	-54.2	-103.2

BARE GELATIN



Bullet: 110 gr. TAP Urban®
BC: .290 **SD:** .166
Muzzle Velocity: 2175 fps
Barrel: 8"
Twist Rate: 1:8"

Total Penetration: 12.75"
Max. Cavity: 4.0"
Depth to Max. Cav.: 3.25"
Entry: 0.5"
Retained Weight: 83.2 gr.





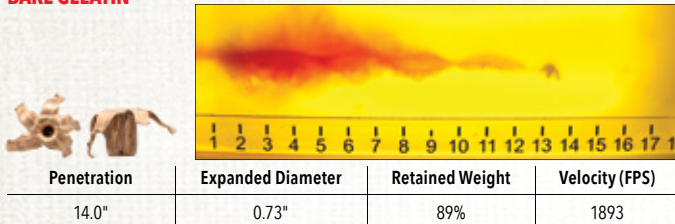
300 BLACKOUT

300 BLACKOUT 111 GR. MONOFLEX® TAP SBR® | 6.75" BBL | SIG MCX | NO. 80865 | **LEAD FREE**

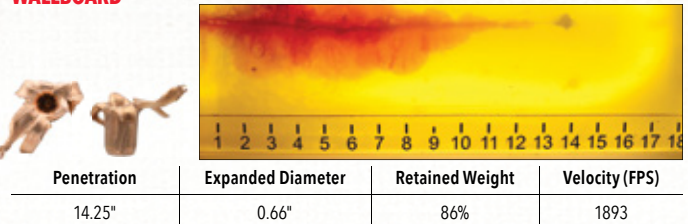
Application: Entry Patrol/Duty | Meets FBI Protocol*

The Hornady® 300 Blackout 111 gr. MonoFlex® TAP SBR® was specifically designed to meet FBI protocol and maximize performance in rifles and pistols with barrel lengths from 6.75" to 12.5" and twist rates of 1:5" to 1:8". The newly designed 111 gr. MonoFlex® TAP SBR® features a lead-monomolithic bullet with a large internal cavity and an elongated elastomer tip. This combination allows for expansion at velocities below 1200 FPS, which equates to an expansion distance that is 3 times longer than that of a traditional 5.56 SBR featuring a 10.5"– 12.5" barrel.

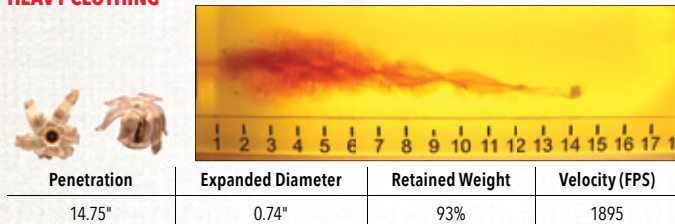
BARE GELATIN



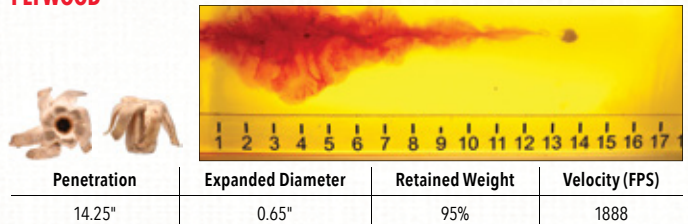
WALLBOARD



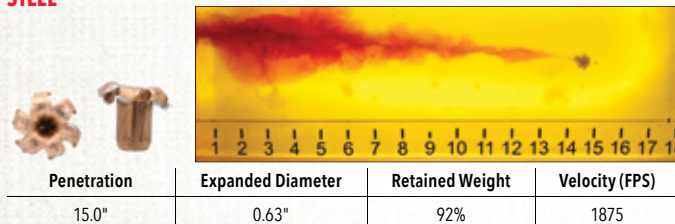
HEAVY CLOTHING



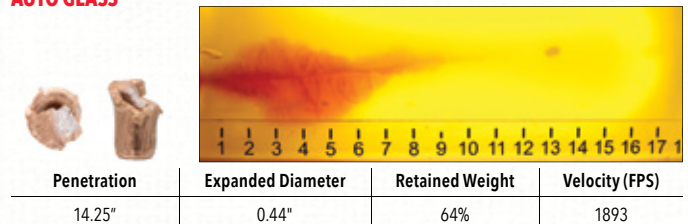
PLYWOOD



STEEL



AUTO GLASS



FREE BALLISTIC APP WITH 4DOF®

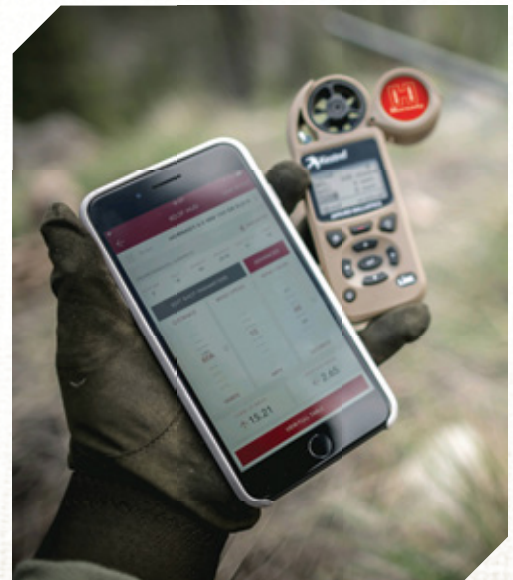
The free Hornady Ballistic Calculator App includes the advanced 4DOF® (4 Degrees of Freedom) calculator, which provides trajectory solutions based on projectile drag coefficient (not ballistic coefficient), as well as a standard BC calculator. Providing more accurate trajectory solutions, the 4DOF® calculator incorporates the projectile's movement about its center of gravity and subsequent angle relative to line of flight, which is the fourth degree of freedom.

- Calculates more accurate trajectories, especially at extreme ranges
- Can be used without wireless connectivity
- Pre-populated with long range match and hunting style bullets

Using Doppler radar, Hornady engineers measured exact drag versus velocity curves for each bullet in the 4DOF® database. Combined with the physical attributes of the projectiles, the 4DOF® calculator is simply more accurate for long-range hits than using BC-based systems or drag curves based on limited data collection points.

The Hornady® 4DOF® Ballistic Calculator is free to use and available at hornady.com/4dof, or download the app from the Apple or Android app stores.

Search App Store or Google Play



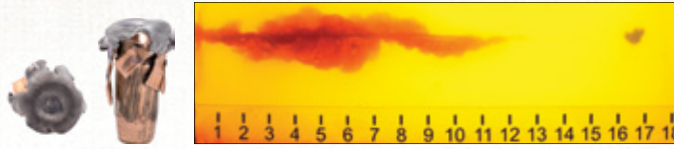
300 BLACKOUT 190 GR. SUB-X® TAP® | 8" BBL | MODERN OUTFITTER MC6 PDW | NO. 80895

Application: Entry Patrol/Duty | Meets FBI Protocol*

The 300 Blackout 190 gr. Sub-X® TAP® is designed to provide barrier performance through FBI protocol when stealth is a necessity.

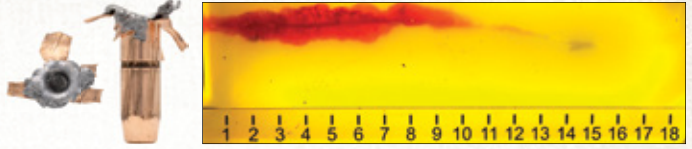
The patented Sub-X® bullet is designed to initiate expansion at distances over 400 yards when fired from an 8"– 16" 300 Blackout rifle or pistol.

BARE GELATIN



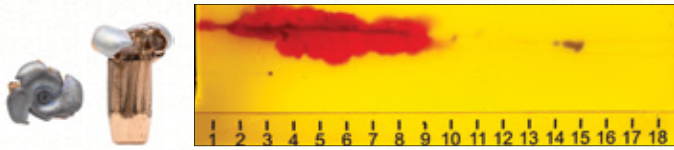
Penetration	Expanded Diameter	Retained Weight	Velocity (FPS)
17.0"	0.57"	92%	998

WALLBOARD



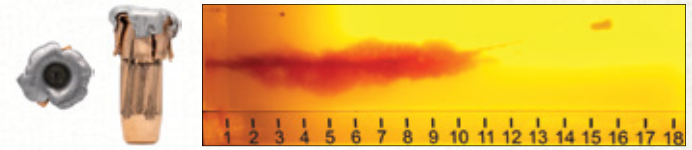
Penetration	Expanded Diameter	Retained Weight	Velocity (FPS)
16.0"	0.42"	98%	997

HEAVY CLOTHING



Penetration	Expanded Diameter	Retained Weight	Velocity (FPS)
15.5"	0.59"	90%	978

PLYWOOD



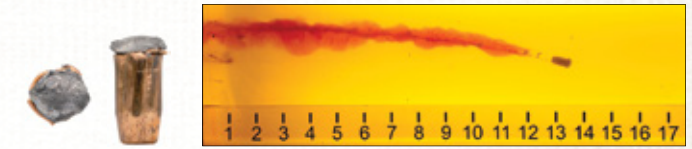
Penetration	Expanded Diameter	Retained Weight	Velocity (FPS)
16.5"	0.52"	100%	992

STEEL



Penetration	Expanded Diameter	Retained Weight	Velocity (FPS)
16.5"	0.49"	100%	977

AUTO GLASS



Penetration	Expanded Diameter	Retained Weight	Velocity (FPS)
14.0"	0.41"	68%	985

300 BLACKOUT TRAINING

Hornady® Training™ ammunition provides a cost effective firearms training alternative to the standard TAP® and Critical Duty® loads. Loaded with proven propellants, coupled with high quality bullets, cases, and primers, Hornady® Training™ ammunition is designed to deliver point of aim / point of impact comparable to our TAP® and Critical Duty® offerings. Hornady® Training™ Ammunition - an economical, high quality solution for Law Enforcement training.

300 BLACKOUT 110 GR. NTX® TRAINING™ BRASS CASE | NO. 80864

20" Test Barrel	Muzzle	100 yd	200 yd
Velocity (fps)	2080	1726	1422
Energy (ft lbs)	1057	728	494
Trajectory (inches)	-1.5	0	-10.3

300 BLACKOUT 220 GR. HPBT TRAINING™ BRASS CASE | NO. 80859

20" Test Barrel	Muzzle	100 yd	200 yd
Velocity (fps)	1050	1009	975
Energy (ft lbs)	539	498	464
Trajectory (inches)	-1.5	0.0	-32.6

300 BLACKOUT 110 GR. FRANGIBLE TRAINING™ BRASS CASE | NO. 80870

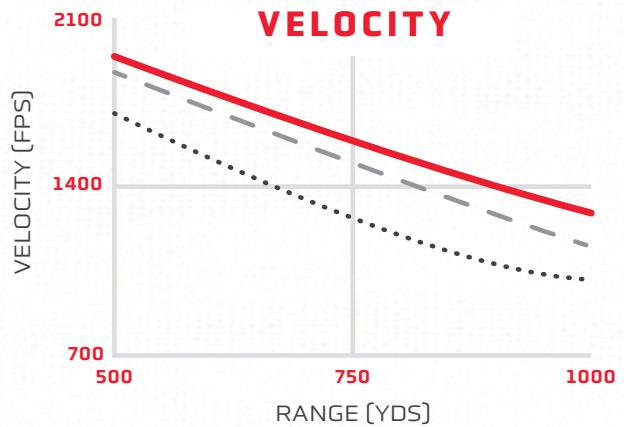
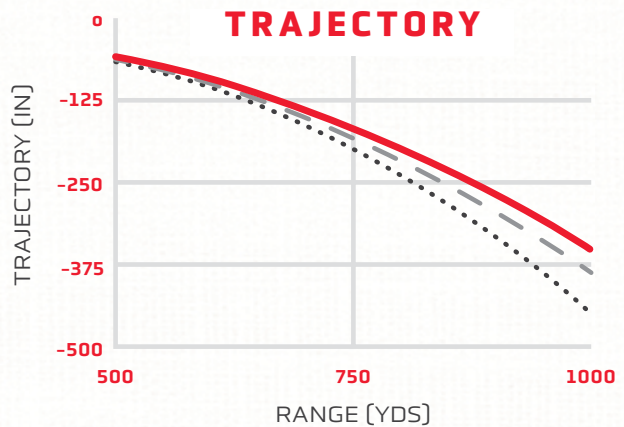
20" Test Barrel	Muzzle	100 yd	200 yd
Velocity (fps)	2375	2094	1834
Energy (ft lbs)	1378	1071	623
Trajectory (inches)	-1.5	3.2	0



6MM ARC

Tested, selected and fielded by a specialized group within the U.S. DoD for its multipurpose combat rifle program, the versatile 6mm ARC does much of what larger cartridges can and everything that smaller cartridges can't. Designed to meet the needs of the world's toughest critics, the 6mm ARC utilizes efficient, high-BC bullets to deliver unprecedented performance from the AR-15 platform.

CARTRIDGE COMPARISON



24" TEST BARREL USED FOR TESTING PURPOSES

223 REM: 3.7 ft/lb

6mm ARC: 6.3 ft/lb

308 WIN: 13.7 ft/lb



54% LESS RECOIL THAN 308 WIN

10 LB. RIFLE

RECOIL COMPARISON

223 REM: 604 ft/lb

6mm ARC: 1062 ft/lb

308 WIN: 1556 ft/lb



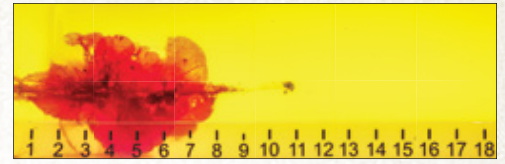
ENERGY AT 400 YARDS

6MM 80 GR. TAP URBAN® | 18" BBL | NO. 81615

Application: Entry/Precision Rifle/Patrol/Duty

The Hornady® 6mm ARC 80 gr. TAP Urban® is the preferred choice for use in rifles when the probability for barrier penetration is low. Rapid expansion provides dramatic wound cavities, massive fragmentation, and prevents over penetration on non-barrier engagements. These factors make this bullet a great choice when collateral risk is high.

BARE GELATIN

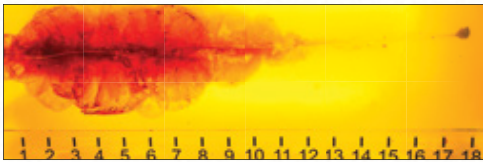


Penetration	Expanded Diameter	Retained Weight	Velocity (FPS)
11.0"	0.57"	49%	2848

6MM 106 GR. TAP® | 18" BBL | NOVESKE PROOF BARREL | NO. 81605

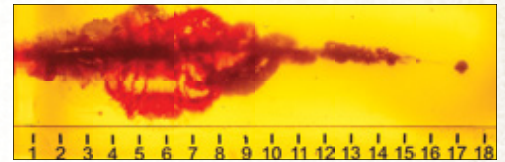
Application: Entry/Precision Rifle/Patrol/Duty | Meets FBI Protocol*

BARE GELATIN



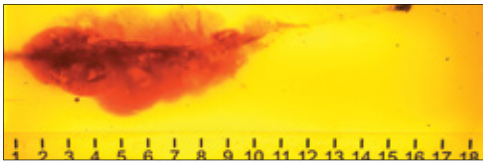
Penetration	Expanded Diameter	Retained Weight	Velocity (FPS)
18.0"	0.53"	73%	2647

WALLBOARD



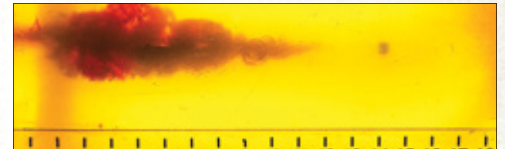
Penetration	Expanded Diameter	Retained Weight	Velocity (FPS)
17.5"	0.48"	71%	2653

HEAVY CLOTHING



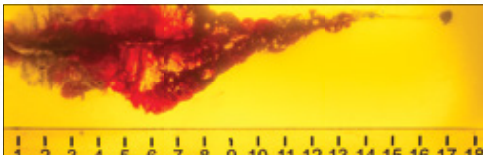
Penetration	Expanded Diameter	Retained Weight	Velocity (FPS)
16.5"	0.44"	62%	2661

PLYWOOD



Penetration	Expanded Diameter	Retained Weight	Velocity (FPS)
15.0"	0.45"	67%	2645

STEEL



Penetration	Expanded Diameter	Retained Weight	Velocity (FPS)
17.5"	0.40"	66%	2677

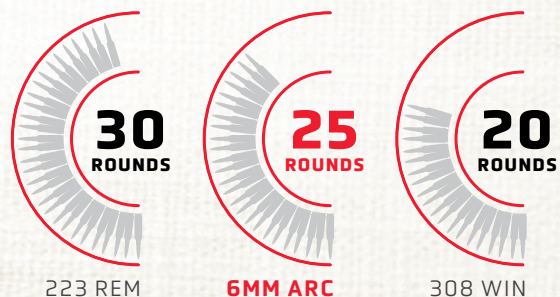
AUTO GLASS



Penetration	Expanded Diameter	Retained Weight	Velocity (FPS)
15.5"	0.35"	39%	2655

30% LIGHTER RIFLE SYSTEM THAN AR-10

MAGAZINE CAPACITY





6.5 CREEDMOOR

Featuring inherently high Ballistic Coefficient (BC) 6.5mm bullets that also deliver high Sectional Density (SD), the 6.5 Creedmoor provides superior external ballistics and shootability with comparable terminal ballistic performance to that of the venerable 308 Winchester. Originally designed by Hornady® as a true match cartridge, the 6.5 Creedmoor is an exceptional choice for all LE/Military applications where the 308 Win had been the only option in the past.



6.5 CREEDMOOR 100 GR. TAP URBAN® NO. 81515

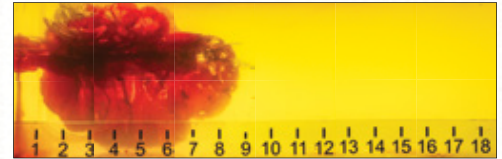
Application: Entry, Precision Rifle

The Hornady® 6.5 Creedmoor 100 gr. TAP Urban® is the preferred choice for use in rifles when the probability for barrier penetration is low. Rapid expansion provides dramatic wound cavities, massive fragmentation, and prevents over penetration on non-barrier engagements. These factors make this bullet a great choice when collateral risk is high.

20" Larue Tactical 1:8"	Muzzle	100 yd	200 yd	300 yd	400 yd	500 yd
Velocity (fps)	3200	2978	2768	2568	2376	2192
Energy (ft lbs)	2274	1970	1702	1464	1253	1067
Trajectory (inches)	-1.5	0	-2.4	-9.4	-21.7	-40.1

BARE GELATIN

This bullet is designed to fragment entirely.



Bullet: 100 gr. TAP Urban®
BC: .448 **SD:** .205
Muzzle Velocity: 3031 fps
Barrel: 20"
Twist Rate: 1:8"

Total Penetration: 9.75"
Max. Cavity: 6.5"
Depth to Max. Cav.: 3.0"
Entry: 0.0"
Retained Weight: 0 gr.



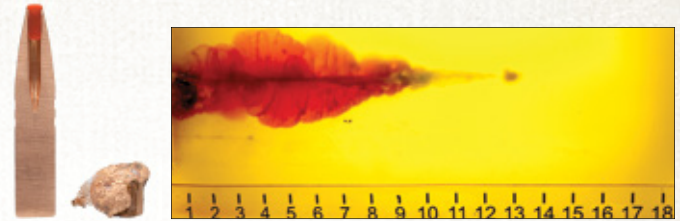
6.5 CREEDMOOR 140 GR. TAP® HEAVY BARRIER™ | NO. 81485 | LEAD FREE

Application: Precision Rifle

TAP® Heavy Barrier™ turns cover into concealment. The TAP® Heavy Barrier™ bullet is constructed of a monolithic copper alloy that shoots cleaner and fouls less than pure copper bullets. This load meets the FBI Protocol penetration requirement (12"-18") through heavy barriers (1" laminated glass, 1½" Lexan and 5/8" subway glass) with high weight retention. Featuring different tip geometry than TAP Precision® ammunition, this offering is loaded in a nickel-plated cartridge case making it easy to distinguish heavy barrier ammunition from other ammunition options.

NOTE: Not recommended for use where over-penetration may be a concern.

1" MULTI-LAM HEAVY GLASS



Bullet: 140 gr. TAP® Heavy Barrier™
BC: .350 **SD:** .287
Muzzle Velocity: 2650 fps
Barrel: 26"
Twist Rate: 1:8"

Total Penetration: 13.75"
Max. Cavity: 4.0"
Depth to Max. Cav.: 4.5"
Entry: 0.0"
Retained Weight: 67.7 gr.

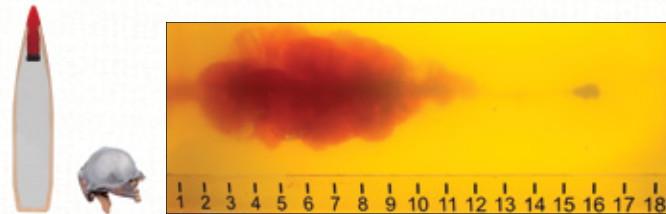
24" SAAMI Test Barrel 1:8"	Muzzle	100 yd	200 yd	300 yd	400 yd	500 yd
Velocity (fps)	2675	2425	2188	1965	1757	1566
Energy (ft lbs)	2224	1827	1488	1200	959	762
Trajectory (inches)	-1.5	0	-4.4	-16.2	-37.0	-69.1

6.5 CREEDMOOR 147 GR. MATCH TAP PRECISION® | NO. 81505

Application: Precision Rifle | Meets FBI Protocol*

Hornady® 6.5 Creedmoor TAP Precision® is specifically designed to meet FBI protocol and provide superior external ballistics when compared to standard 308 Win offerings. The 147 gr. Match bullet with Heat Shield® tip delivers excellent terminal performance and results in higher retained velocities, less drop, less wind drift, and more energy on target.

BARE GELATIN

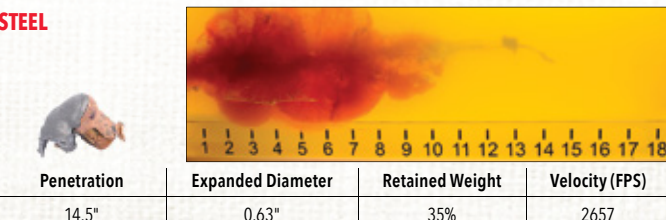


Bullet: 147 gr. Match TAP Precision®
BC: .697 **SD:** .301
Muzzle Velocity: 2646 fps
Barrel: 24"
Twist Rate: 1:8"

Total Penetration: 16.0"
Max. Cavity: 5.5"
Depth to Max. Cav.: 2.5"
Entry: 1.0"
Retained Weight: 68.4 gr.

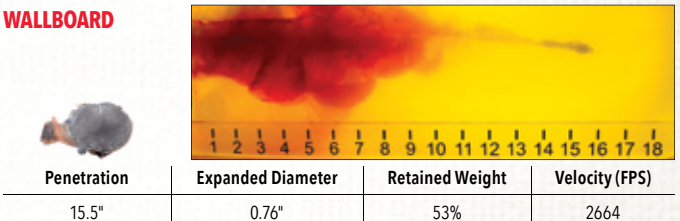
24" SAAMI Test Barrel 1:8"	Muzzle	100 yd	200 yd	300 yd	400 yd	500 yd
Velocity (fps)	2695	2567	2443	2323	2206	2092
Energy (ft lbs)	2370	2151	1948	1761	1587	1428
Trajectory (inches)	-1.5	0	-3.8	-13.4	-29.5	-52.7

STEEL



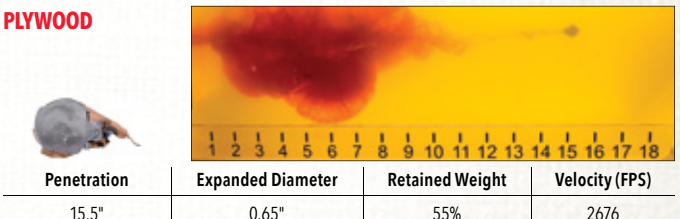
Penetration	Expanded Diameter	Retained Weight	Velocity (FPS)
14.5"	0.63"	35%	2657

WALLBOARD



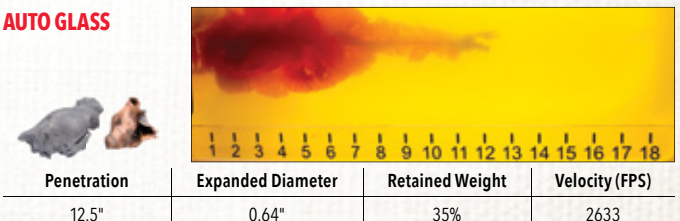
Penetration	Expanded Diameter	Retained Weight	Velocity (FPS)
15.5"	0.76"	53%	2664

PLYWOOD



Penetration	Expanded Diameter	Retained Weight	Velocity (FPS)
15.5"	0.65"	55%	2676

AUTO GLASS



Penetration	Expanded Diameter	Retained Weight	Velocity (FPS)
12.5"	0.64"	35%	2633



308 WIN

Hornady® TAP® Rifle loads offer reliable functioning, low muzzle signature and superior terminal performance. Hornady® urban/precision loads provide a low risk of over-penetration due to their enhanced expansion characteristics. The polymer tipped variants have high ballistic coefficients, making them an excellent choice for SWAT precision marksmen.

308 WIN 110 GR. TAP URBAN® NO. 80896

Application: Entry, Precision Rifle

This cartridge demonstrates rapid expansion, fragmentation and low retained weight, offering the least penetration in ballistic gelatin and lower felt recoil as compared to heavier TAP® loads. The 110 gr. bullet demonstrates similar penetration to the 223 Rem 75 gr. BTHP bullet, but with substantially more temporary and permanent cavity and fragmentation, proving itself an excellent choice for high collateral risk environments.

24" SAAMI 308 Win Test Barrel 1:12"	Muzzle	100 yd	200 yd	300 yd	400 yd	500 yd
Velocity (fps)	3160	2826	2516	2226	1956	1707
Energy (ft lbs)	2439	1950	1546	1210	934	712
Trajectory (inches)	-1.5	0	-2.9	-11.3	-26.8	-51.4

308 WIN 155 GR. MATCH TAP PRECISION® NO. 80905

Application: Entry, Precision Rifle | Meets FBI Protocol*

Designed as an improvement on the 155 gr. TAP Precision® load, incorporating the Match bullet. The 155 gr. Match bullet with Heat Shield® tip delivers excellent terminal performance and features a resilient, heat resistant polymer tip that improves the ballistic coefficient, resulting in higher impact velocities, less drop, less wind drift, and more energy on target.

24" SAAMI 308 Win Test Barrel 1:12"	Muzzle	100 yd	200 yd	300 yd	400 yd	500 yd
Velocity (fps)	2785	2589	2401	2222	2050	1886
Energy (ft lbs)	2669	2307	1985	1699	1446	1224
Trajectory (inches)	-1.5	0	-3.7	-13.4	-30.2	-55.4

308 WIN 165 GR. TAP® HEAVY BARRIER™ | NO. 80985

Application: Precision Rifle

TAP® Heavy Barrier™ turns cover into concealment. Constructed of a monolithic copper alloy that shoots cleaner than pure copper and fouls less, the 165 gr. bullets are designed to meet FBI Protocol (12" – 18") through heavy barriers such as 1" laminated glass, 1½" Lexan, and ¾" subway glass with exceptional weight retention while still delivering superior terminal performance. This offering is loaded in a nickel-plated cartridge case making it easy to distinguish from other options.

24" SAAMI 308 Win Test Barrel 1:12"	Muzzle	100 yd	200 yd	300 yd	400 yd	500 yd
Velocity (fps)	2610	2413	2224	2044	1872	1711
Energy (ft lbs)	2496	2132	1812	1530	1284	1072
Trajectory (inches)	-1.5	0	-4.5	-16.0	-35.9	-65.8



Endorsed by the American Sniper Association.
All 308 Win ballistic gelatin shots were fired from 30 feet.

BARE GELATIN

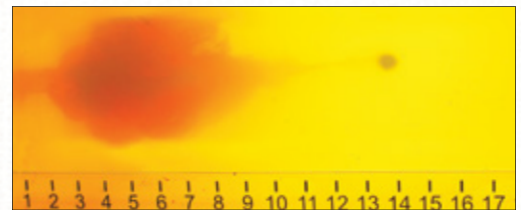


This bullet is designed to fragment entirely.

Bullet: 110 gr. TAP Urban®
BC: .290 **SD:** .166
Muzzle Velocity: 2998 fps
Barrel: 20"
Twist Rate: 1:12"

Total Penetration: 10.0"
Max. Cavity: 6.0"
Depth to Max. Cav.: 4.5"
Entry: 0.0"
Retained Weight: 5.6 gr.

BARE GELATIN

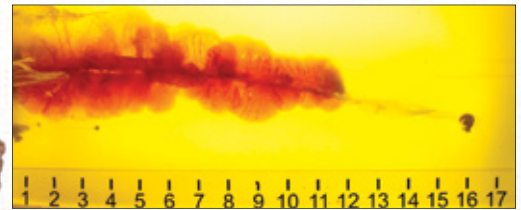


Bullet: 155 gr. Match TAP Precision®
BC: .461 **SD:** .233
Muzzle Velocity: 2856 fps
Barrel: 26"
Twist Rate: 1:12"

Total Penetration: 13.75"
Max. Cavity: 6.0"
Depth to Max. Cav.: 3.0"
Entry: 0.5"
Retained Weight: 72.5 gr.

LEAD FREE

1" MULTI-LAM HEAVY GLASS



Bullet: 165 gr. TAP® Heavy Barrier™
BC: .447 **SD:** .248
Muzzle Velocity: 2735 fps
Barrel: 26"
Twist Rate: 1:12"

Total Penetration: 16.25"
Max. Cavity: 4.0"
Depth to Max. Cav.: 3.5"
Entry: 0.0"
Retained Weight: 116.5 gr.

308 WIN 168 GR. TAP PRECISION®

NO. 80965

Application: Entry, Precision Rifle | Meets FBI Protocol*

The 168 gr. TAP Precision® bullet is a match grade bullet with the performance advantages of a polymer tip. Standard barrier performance is exemplary and this load demonstrates controlled and impressive soft tissue expansion without over penetration. Hornady® 168 gr. TAP Precision® offers industry leading all-around performance for law enforcement precision marksmen providing the ability to stop a threat.

Meets FBI barrier penetration performance requirements.

Endorsed by the American Sniper Association.

24" SAAMI 308 Win Test Barrel 1:12"	Muzzle	100 yd	200 yd	300 yd	400 yd	500 yd
Velocity (fps)	2680	2494	2316	2145	1981	1825
Energy (ft lbs)	2679	2320	2000	1715	1464	1242
Trajectory (inches)	-1.5	0	-4.1	-14.7	-32.9	-59.9

308 WIN 168 GR. MATCH TAP PRECISION®

NO. 80725

Application: Entry, Precision Rifle | Meets FBI Protocol*

Hornady® 308 Win 168 gr. Match TAP Precision® ammunition was designed as an improvement on the 168 gr. TAP Precision® load. The 168 gr. Match bullet with Heat Shield® tip delivers the excellent terminal performance TAP Precision® is known for, but features a resilient, heat resistant polymer tip that improves the ballistic coefficient, resulting in higher impact velocities, less drop, less wind drift, and more energy on target.

24" SAAMI 308 Win Test Barrel 1:12"	Muzzle	100 yd	200 yd	300 yd	400 yd	500 yd
Velocity (fps)	2710	2540	2376	2218	2066	1920
Energy (ft lbs)	2739	2406	2105	1835	1592	1375
Trajectory (inches)	-1.5	0	-3.9	-14.0	-31.1	-56.4

308 WIN 168 GR. MATCH TAP AR™

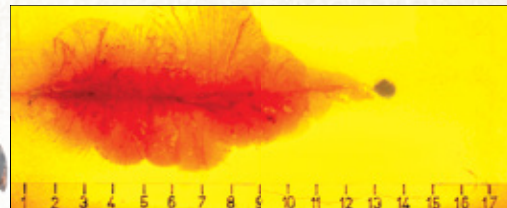
NO. 80715

Application: Entry, Precision Rifle | Meets FBI Protocol*

Designed specifically for the 308 AR-10 platform and its variants, the resilient tip of the Match TAP AR™ bullet aids in reliable feed and function, and the propellant is specifically tailored to efficiently operate in the AR-10. The 168 gr. Match bullet with Heat Shield® tip delivers the excellent terminal performance TAP Precision® is known for, but features a resilient, heat resistant polymer tip that improves the ballistic coefficient, resulting in higher impact velocities, less drop, less wind drift, and more energy on target.

24" SAAMI 308 Win Test Barrel 1:12"	Muzzle	100 yd	200 yd	300 yd	400 yd	500 yd
Velocity (fps)	2670	2501	2339	2182	2031	1887
Energy (ft lbs)	2659	2333	2040	1776	1539	1329
Trajectory (inches)	-1.5	0	-4.1	-14.5	-32.3	-58.5

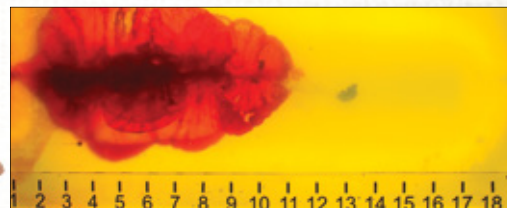
BARE GELATIN



Bullet: 168 gr.
BC: .475 **SD:** .253
Muzzle Velocity: 2537 fps
Barrel: 20"
Twist Rate: 1:12"

Total Penetration: 14.25"
Max. Cavity: 6.5"
Depth to Max. Cav.: 7.0"
Entry: 0.5"
Retained Weight: 120.8 gr.

BARE GELATIN



Bullet: 168 gr. Match
BC: .523 **SD:** .253
Muzzle Velocity: 2718 fps
Barrel: 26"
Twist Rate: 1:12"

Total Penetration: 13.25"
Max. Cavity: 7.0"
Depth to Max. Cav.: 3.75"
Entry: 0.5"
Retained Weight: 125.2 gr.

BARE GELATIN



Bullet: 168 gr. Match
BC: .523 **SD:** .253
Muzzle Velocity: 2542 fps
Barrel: 16"
Twist Rate: 1:8"

Total Penetration: 15.25"
Max. Cavity: 5.0"
Depth to Max. Cav.: 4.5"
Entry: 0.5"
Retained Weight: 101.4 gr.



300 WIN MAG / 300 PRC

300 WIN MAG

Hornady® 300 Win Mag 178 gr. Match TAP Precision® ammunition was designed as an improvement on the 178 gr. TAP Precision® load by incorporating the Match bullet. Offering higher velocity and energy that law enforcement professionals may require over the standard 308 Win, makes this a great alternative to utilize in a variety of situations. The tip initiates expansion of the Match bullet, ensuring uniform expansion and penetration through a variety of barriers, while mitigating liability due to over-penetration.

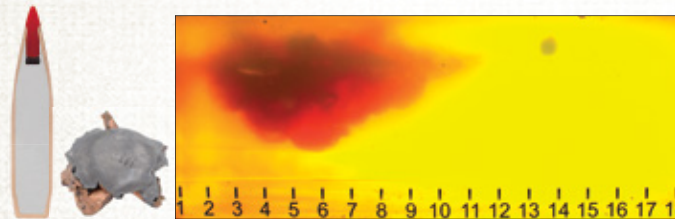


300 WIN MAG 178 GR. MATCH TAP PRECISION®

NO. 82045

Application: Precision Rifle

BARE GELATIN



Bullet: 178 gr. Match
BC: .547 **SD:** .268
Muzzle Velocity: 2894 fps
Barrel: 22"
Twist Rate: 1:8"

Total Penetration: 14.25"
Max. Cavity: 8.5"
Depth to Max. Cav.: 4.25"
Entry: 0.5"
Retained Weight: 82.8 gr.

24" SAAMI 308 Win Test Barrel 1:12"	Muzzle	100 yd	200 yd	300 yd	400 yd	500 yd
Velocity (fps)	2960	2788	2622	2462	2308	2159
Energy (ft lbs)	3463	3071	2717	2396	2106	1843
Trajectory (inches)	-1.5	0	-3.0	-11.0	-24.8	-45.2

300 PRC

Designed and adopted to fulfill a specific need within the Department of Defense by increasing hit probability and providing exceptional terminal performance from 0 – 2000 yards. This cartridge is an efficient, non-belted magnum featuring a 225 grain Match bullet with a Heat Shield® Tip. While utilizing the same bolt face as a 300 Win Mag, the 300 PRC headspaces off the shoulder rather than a belt, providing superior accuracy. Following similar design characteristics present in the 6.5 Creedmoor, the 300 PRC provides higher velocities and the ability to run longer/heavier bullets than the 300 Win Mag, making it a much more effective cartridge.

The Match with Heat Shield® Tip results in higher retained velocities, less drop, less wind drift, and is designed to expand at velocities as low as 1650 FPS making it an excellent choice for Military, SWAT, and Precision Rifle Marksman.

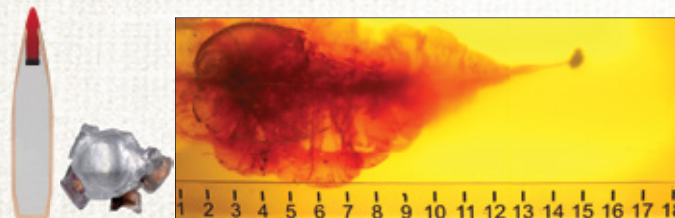


300 PRC 225 GR. MATCH TAP PRECISION®

No. 81215

Application: Precision Rifle

BARE GELATIN



Bullet: 225 gr. Match
BC: .777 **SD:** .339
Muzzle Velocity: 2650 fps
Barrel: 26" Proof Carbon Fiber
Twist Rate: 1:8"

Total Penetration: 15.0"
Max. Cavity: 8.0"
Depth to Max. Cav.: 4.5"
Entry: 0.0"
Retained Weight: 95.8 gr.

24" SAAMI 308 Win Test Barrel 1:12"	Muzzle	100 yd	200 yd	300 yd	400 yd	500 yd
Velocity (fps)	2810	2692	2577	2465	2356	2250
Energy (ft lbs)	3945	3620	3318	3036	2773	2529
Trajectory (inches)	-1.5	0	-3.3	-11.9	-26.1	-46.7

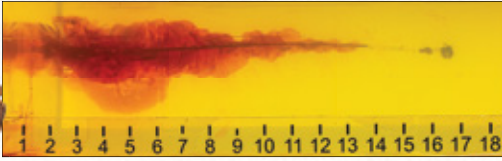


7.62x39

7.62x39 111 GR. MONOFLEX® | 9" BBL | NO. 80785

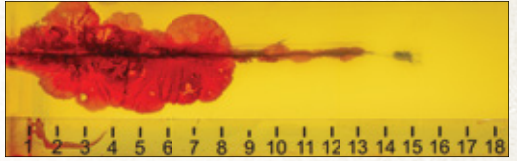
Application: Entry Patrol/Duty | Meets FBI Protocol*

BARE GELATIN



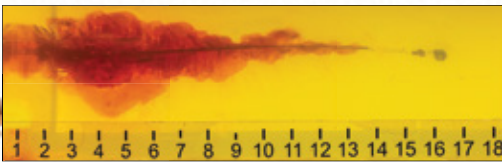
Penetration	Expanded Diameter	Retained Weight	Velocity (FPS)
17.0"	0.57"	98%	2024

WALLBOARD




Penetration	Expanded Diameter	Retained Weight	Velocity (FPS)
16.0"	0.50"	87%	2006

HEAVY CLOTHING



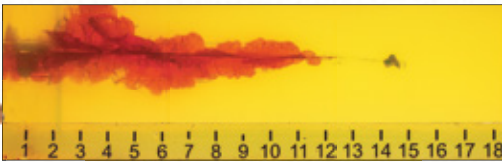
Penetration	Expanded Diameter	Retained Weight	Velocity (FPS)
16.75"	0.57"	98%	2018

PLYWOOD



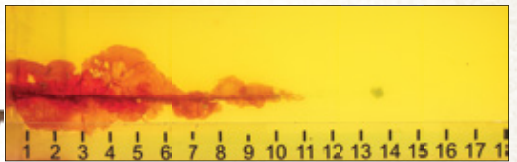
Penetration	Expanded Diameter	Retained Weight	Velocity (FPS)
16.75"	0.49"	93%	2021

STEEL



Penetration	Expanded Diameter	Retained Weight	Velocity (FPS)
15.0"	0.67"	97%	2015

AUTO GLASS



Penetration	Expanded Diameter	Retained Weight	Velocity (FPS)
14.0"	0.53"	74%	2014



LIGHT 'EM UP.

NEW

HIT™ Target Impact Indicator

Instantly identify impacts – even at 1,000 yards.

The new HIT™ Target Impact Indicator from Hornady® gives you the ability to see when a steel target has been hit. Attach it to the target stand and you'll never have to guess again.

It easily distinguishes impacts by blinking "H-I-T" in Morse code

- Ultra-bright LED light is visible up to 1,000+ yards with the naked eye.
- Easily attaches to most stands with included elastic band.
- Accelerometer detects bullet vibrations for activation.
- Rechargeable unit is available in 2-packs, 5-packs and 50-packs.



338 LAPUA



The selection of Hornady® TAP® 338 Lapua Magnum ammunition offers exceptional accuracy and outstanding terminal performance. Polymer tipped options provide high ballistic coefficients, flat trajectory and reduced wind deflection. Components are purposefully selected for consistency, uniformity, and temperature stability and loaded using stringent quality control. Hornady® TAP® 338 Lapua Magnum is a great choice for military and SWAT precision marksmen when heavy bullets and increased energy on target are required.



338 LAPUA 250 GR. BTHP

NO. 8230

BC: .670 SD: .313

24" Test Barrel	Muzzle	100 yd	200 yd	300 yd	400 yd	500 yd
Velocity (fps)	2850	2712	2579	2449	2323	2201
Energy (ft lbs)	4509	4083	3691	3330	2996	2689
Trajectory (inches)	-1.5	0	-3.2	-11.7	-26.0	-46.7



338 LAPUA 285 GR. MATCH

NO. 82300

BC: .789 SD: .356

24" Test Barrel	Muzzle	100 yd	200 yd	300 yd	400 yd	500 yd
Velocity (fps)	2745	2630	2519	2410	2304	2200
Energy (ft lbs)	4768	4378	4015	3676	3359	3064
Trajectory (inches)	-1.5	0	-1.8	-7.2	-20.5	-40.3



338 LAPUA 300 GR. HPBT

NO. 82319

BC: .716 SD: .375

24" Test Barrel	Muzzle	100 yd	200 yd	300 yd	400 yd	500 yd
Velocity (fps)	2625	2502	2383	2267	2154	2044
Energy (ft lbs)	4590	4170	3782	3423	3090	2783
Trajectory (inches)	-1.5	0	-4.1	-14.2	-31.2	-55.7





RIFLE

Designed and loaded for outstanding accuracy and consistency, Hornady® TAP® Rifle ammunition is a great choice for the military or SWAT precision marksman. Components are individually selected to ensure uniform ignition, velocity, and precision. Arm yourself with ammunition from a legendary company that understand bullet design and ballistics better than anyone else in the world – Hornady.



7.62x51 175 GR. HPBT

NO. 80998M

BC: .485 SD: .264

24" Test Barrel	Muzzle	100 yd	200 yd	300 yd	400 yd	500 yd
Velocity (fps)	2525	2349	2180	2018	1863	1717
Energy (ft lbs)	2477	2144	1846	1582	1349	1145
Trajectory (inches)	-1.5	0	-4.8	-17.0	-37.7	-68.4



Purposefully designed to exceed the performance of XM118LR ammunition.



50 BMG 750 GR. A-MAX®

NO. 8270

BC: 1.050 SD: .412

36" Test Barrel	Muzzle	100 yd	200 yd	300 yd	400 yd	500 yd
Velocity (fps)	2810	2722	2637	2552	2470	2389
Energy (ft lbs)	13149	12342	11576	10849	10158	9502
Trajectory (inches)	-1.5	0	-3.2	-11.4	-24.9	-44.2

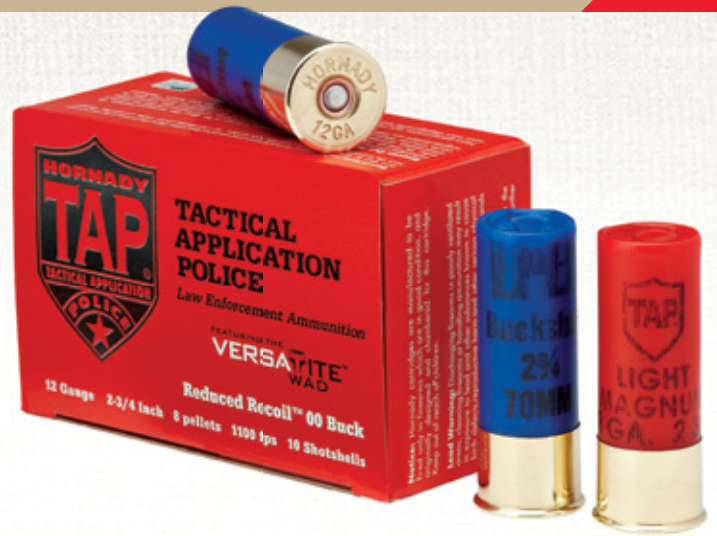




SHOTGUN

TAP® 12 gauge shotgun ammunition lives up to the legendary Hornady® name in every way – reliable functioning, consistent performance and tighter patterns without modification to the shotgun.

Hornady® offers multiple loads specially designed for the type of shotgun you use and the situations you face. Both the Reduced Recoil™ (blue) and Light Magnum® (red) loadings in 00 buck and slug offer reliable functioning, consistent performance, and better patterns than traditional shotgun shells through use of specialized wad technology. Our TAP® Entry™ (black) is designed to be utilized for multiple applications – breaching, entry, and training.



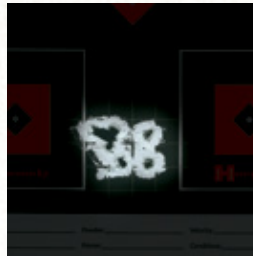
00 BUCK FEATURING THE **VERSATITE** WAD

12 GA 2¾" TAP® REDUCED RECOIL™ 00 BUCK NO. 86265

Hornady® TAP® Reduced Recoil™ (blue hull) is a reduced velocity load designed primarily for pump action shotguns. It comes loaded in a blue hull with a load delivering a velocity of 1,100 fps (30" test barrel.)

Firearm: 18½" bbl Remington 870 Police Magnum

Shot Size	Pellet Count	Muzzle Velocity (fps)
00 Buck	8	991



7 Yards | 1.325"



15 Yards | 2.687"



25 Yards | 4.437"

12 GA 2¾" TAP® LIGHT MAGNUM® 00 BUCK NO. 86275

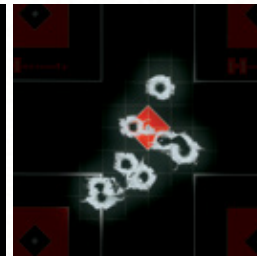
Hornady® TAP® Light Magnum® Buckshot (red hull) is loaded to a velocity of 1600 fps (30" test barrel) to ensure proper functioning in semi-automatic police shotguns. The Light Magnum® Buckshot can also be used in pump action shotguns.

Firearm: 18½" bbl Benelli M1 Super 90

Shot Size	Pellet Count	Muzzle Velocity (fps)
00 Buck	8	1428



7 Yards | 1.875"



15 Yards | 2.75"



25 Yards | 5.187"

RIFLED SLUG

12 GA 2¾" 1 OZ. TAP® REDUCED RECOIL™ RIFLED SLUG NO. 86285

Hornady® TAP® Reduced Recoil™ Rifled Slug (blue hull) is loaded to a velocity of 1350 fps (30" test barrel). This rifled slug is designed to be used in pump action shotguns with smooth bore barrels.

Firearm: 18½" bbl Remington 870 Police Magnum Smooth Bore

Shot Size	Pellet Count	Muzzle Velocity (fps)
Rifled Slug	1 oz.	1350



25 Yards | 2.0"

12 GA 2¾" 1 OZ. TAP® LIGHT MAGNUM® RIFLED SLUG NO. 86235

Hornady® TAP® Light Magnum® Rifled Slug (red hull) is loaded to a velocity of 1600 fps (30" test barrel). Reliably functions in smooth bore semi-automatic police shotguns while maintaining SAAMI pressure specifications.

Firearm: 18½" bbl Benelli M1 Super 90 Smooth Bore

Shot Size	Pellet Count	Muzzle Velocity (fps)
Rifled Slug	1 oz.	1600



25 Yards | 2.75"



One of the first responsibilities of owning a gun is properly securing it when not in use. But more than that, protecting your firearms and other valuables just makes sense. Hornady makes it easy with a variety of safes, vaults and accessories for your home, your vehicle or however you travel. By utilizing patented RFID technology, Hornady Security® RAPID® Safes offer the quickest, most dependable access to your firearm while providing unmatched security from unauthorized users.

As a firearms owner, you have many options for storage devices to fit your lifestyle and home. On the following pages, you'll find security products for handguns, rifles and shotguns. Explore the storage options, including products on Snapsafe.com, to see what we have available and determine what will work best for your situation.



Simplify YOUR SECURITY

Access all your Hornady® RAPID® Safes with a single RFIID tag.

No matter the number of RAPID® Safes you own, one tag can open them all. Simply program your preferred RFID tag (watchband, key fob or adhesive decal) then hold over the reader and the safe opens for quick access.

By using RFID technology, there's no need to find a key, register a fingerprint, or remember a combination.

Hornady offers a wide selection of RAPID® Safes, from one and two-gun safes up to the Ready Vault™ that holds up to 8 long guns and 14 handguns.

Fast and dependable touch-free entry with patented RFID technology.



Watchband Tag



Key Fob



Adhesive Decal

EVERY RAPID® SAFE COMES WITH MULTIPLE RFID TAGS

Every Hornady Security® RAPID® Safe can be programmed to read up to five different RFID tags.

Various tags and accessories are available. RFID decals can be placed on your phone or any other convenient placement.



***IMPORTANT:** Do not store loaded firearms in any safe or lock box. Follow local, state and federal laws for firearm storage and transport. Check TSA regulations and airline policies before traveling with any portable safe. Check dimensions of your firearm against safe's internal dimensions. Firearm and firearm accessories not included.



RAPiD® Safe Compact Ready Vault™ w/ WiFi
No. 98196WIFI

Exterior: 52.2"x 10"x 10"*
 (*add 1.7" for handle)
 Interior: 51.8"x 9.8"x 8"
 Weight: 70 lbs.

Metal Shelf

Designed to fit the RAPiD® Safe Compact Ready Vault™ but compatible with other Square-Lok™ products. 25 pound weight capacity. 9"x 6"

No. 98253



RAPiD® Safe Ready Vault™ w/ WiFi
No. 98195WIFI

Exterior: 52.2"x 20"x 15.1"*
 (*add 1.7" for handle)
 Interior: 51.8"x 19"x 12.7"
 Weight: 170 lbs.

Ready Vault™ Shelf Kit

For use in the RAPiD® Safe Ready Vault™. 100 pound weight capacity. 18.5"x 10"

No. 98252



NEW

Welded Gun Cabinets

This fully welded security cabinet secures firearms that are up to 53 inches long. The anti-pick three point key lock system means only key holders have access. It has storage capacity for everything from rifles, shotguns, and handguns to gear and supplies. Pry-resistant concealed hinges prevent tampering.

- High quality steel paired with three-point locking mechanism and barrel key lock provide peace of mind.
- Fully adjustable shelf and gun racks.
- Shelf accommodates extra-long shotguns and rifles.
- Heavy-duty PVC coated gun racks.
- Neoprene floor mat.

8-Gun Welded Cabinet No. 95102
 (53"H x 17"W x 11"D)

10-Gun Welded Cabinet No. 95103
 (53"H x 17"W x 13.4"D)

12-Gun Welded Cabinet No. 95104
 (53"H x 20"W x 15"D)



***IMPORTANT:** Do not store loaded firearms in any safe or lock box. Follow local, state and federal laws for firearm storage and transport. Check TSA regulations and airline policies before traveling with any portable safe. Check dimensions of your firearm against safe's internal dimensions. Firearm and firearm accessories not included.



Mount horizontally or vertically.



SCAN TO
LEARN MORE

RAPiD® Safe AR Gunlocker

The AR Gunlocker stows neatly under a bed, in a closet or the back of an SUV, providing total security with its fully enclosed design. Available in two sizes, secure up to three tactical-length rifles or shotguns and access them quickly and efficiently, thanks to RFID technology.

VERSATILE AND SECURE

Mount horizontally or vertically, and secure to wall, floor or other stationary object with pre-drilled mounting holes or included security cable.

EASY, CONVENIENT ACCESS

Spring-loaded door opens when unlocked to provide instant access to carbine-length weapons.

CERTIFIED CHILD-RESISTANT

Exceeds ASTM International and California DOJ safety standards for child and pry resistance, lock strength, drop/pick/saw tests and hinge attack resistance.

PROTECTIVE INTERIOR

Padded interior and foam gun mounts preserve firearms' appearance.



No. 98190

Holds up to two tactical length rifles.*

Exterior: 42"x 15.25"x 6.75"

Interior: 40.5"x 13.5"x 5.5"

Weight: 50 pounds

***IMPORTANT:** Do not store loaded firearms in any safe or lock box. Follow local, state and federal laws for firearm storage and transport. Check TSA regulations and airline policies before traveling with any portable safe. Check dimensions of your firearm against safe's internal dimensions. Firearm and firearm accessories not included.



SCAN TO
LEARN MORE

RAPiD® Safe Shotgun Wall Lock

Keeping a firearm for self-defense hinges on how fast you can retrieve it. Tuck away the RAPiD® Safe Shotgun Wall Lock behind a door or in a closet — anywhere you need quick access. Designed specifically for shotguns, it fits most models, keeping them secure from unauthorized users but ready when personal protection depends on it.

VERSATILE AND CONVENIENT

The Shotgun Wall Lock mounts horizontally or vertically, whichever fits your space best.

EASY TO SECURE

Pre-drilled mounting holes and included hardware make installation quick and simple.

SAFE AROUND CHILDREN

Exceeds ASTM International and California DOJ safety standards for child and pry resistance, lock strength, drop/pick/saw tests and hinge attack resistance.

PROTECTIVE INTERIOR

Padded interior protects your shotgun from scratches and marring.

No. 98180

Exterior: 8.5" x 9.2" x 2.7"



***IMPORTANT:** Do not store loaded firearms in any safe or lock box. Follow local, state and federal laws for firearm storage and transport. Check TSA regulations and airline policies before traveling with any portable safe. Check dimensions of your firearm against safe's internal dimensions. Firearm and firearm accessories not included.



SCAN TO
LEARN MORE



RAPiD® Safe Night Guard®

The RAPiD® Safe Night Guard® keeps your handgun as close as your nightstand. RFID technology offers the quickest, most dependable access to your firearm while providing unmatched security from unauthorized users.

DISCREET DISPLAY PANEL

Hidden in plain sight, the tempered glass front panel displays a digital clock while disguising the RFID reader and access code keypad.

SPRING-ASSIST DRAWER

Drawer slides open quickly and quietly to reveal padded interior. Accommodates most full-size handguns and/or other valuables.

USB PORTS

USB ports provide convenient charging for cellphones or other devices.

SAFE AND READY

AC and battery power ensure your gun and other valuables are protected and ready 24/7.

CERTIFIED CHILD-RESISTANT

Exceeds ASTM International and California DOJ safety standards for child safety and pry resistance, lock strength, drop/pick/saw tests and hinge attack resistance.

No. 98215

Exterior: 12" x 10.5" x 3"
Interior: 9.2" x 6.9" x 2.2"
Weight: 18 lbs.



***IMPORTANT:** Do not store loaded firearms in any safe or lock box. Follow local, state and federal laws for firearm storage and transport. Check TSA regulations and airline policies before traveling with any portable safe. Check dimensions of your firearm against safe's internal dimensions. Firearm and firearm accessories not included.



All RAPID® Safes include a digital keypad as an alternate form of entry.



2700KP



RAPiD® Safe 2700KP and 4800KP

These RAPID® Safes provide convenient, tamper-proof security for handguns and other valuables while you're at home or traveling. Their small footprint fits easily on a nightstand or in a suitcase, so your firearm is always protected and ready to go. With three sizes, there's an option for any size handgun.

CERTIFIED CHILD-RESISTANT

Exceeds ASTM International and California DOJ safety standards for child and pry resistance, lock strength, drop/pick/saw tests and hinge attack resistance.

SAFE AND READY

AC and battery power means your handgun is both protected and ready to go 24/7.

MOBILE SECURITY

Included cable allows safe to be secured to a stationary object. Meets TSA requirements for handgun safety in checked luggage.*



4800KP



RAPiD® Safe 2700KP [X-Large]

No. 98172

Fits most 1911-size pistols and 4-inch revolvers.*

Exterior: 12.7"x 8.7"x 2.9"
Interior: 9"x 7.7"x 2.2"

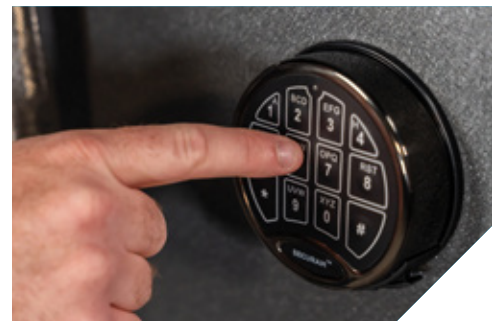
RAPiD® Safe 4800KP [XX-Large]

No. 98141

Fits two 1911-sized pistols or one large revolver.*

Exterior: 10.5"x 12"x 2.9"
Interior: 7.2"x 11"x 2.2"

*IMPORTANT: Do not store loaded firearms in any safe or lock box. Follow local, state and federal laws for firearm storage and transport. Check TSA regulations and airline policies before traveling with any portable safe. Check dimensions of your firearm against safe's internal dimensions. Firearm and firearm accessories not included.



SCAN TO
LEARN MORE

Mobilis™ Safes **NEW**

Discover the ultimate solution for safeguarding your valuable firearms, ammo and gear with Hornady Security® Mobilis™ Safes. These safes offer an innovative modular design that ensures you get the security you need when you want. Gone are the days of struggling with moving companies or installers – the Mobilis™ Safes can be transported and assembled piece by piece in any room of your choice. The included tool kit provides everything required for assembly, giving you the power to set up your safe in a matter of minutes.

FEATURES:

- Thick 9 gauge 2-ply steel exterior walls with pry-resistant 3/16" solid steel door and non-breach seal.
- Nine to fourteen 1-inch steel live locking bolts (depending on model).
- Square-Lok™ interior organizing system maximizes storage space.
- Metal Square-Lok™ shelves and rifle/pistol gun racks can be configured to suit your needs.
- Additional Square-Lok™ accessories can be purchased separately.
- Built-in 120V outlet and USB power strip.
- Protective shelf and floor mats.
- 2300°F one-hour Fire Shield protection and heat-activated door seals.
- Durable powder-coated finish in matte grey.
- Stylish black nickel handles and keypad.
- UL Listed digital lock with EMP mechanical key backup.
- Pre-drilled for floor mounting.
- Lifetime warranty.
- Delivered right to your door.
- Manage your personal security code for 100% privacy.

SEE OUR FULL LINE OF
SQUARE-LOK™
ACCESSORIES
SEE PAGES 44-45

***IMPORTANT:** Do not store loaded firearms in any safe or lock box. Follow local, state and federal laws for firearm storage and transport. Check TSA regulations and airline policies before traveling with any portable safe. Check dimensions of your firearm against safe's internal dimensions. Firearm and firearm accessories not included.



Mobilis™ Safe **NEW**
Single Door
No. 95070

Exterior: 22"W x 59"H x 18"D*
(*add 2" for handle)
Interior: 18"W x 53.5"H x 14.4"D



Mobilis™ Safe **NEW**
Double Door
No. 95071

Exterior: 34"W x 59"H x 25"D**
(**add 2.6" for handle)
Interior: 30"W x 52.5"H x 21.4"D



Mobilis™ Safe **NEW**
Double Door MAX
No. 95072

Exterior: 46"W x 71"H x 31"D**
(**add 2.6" for handle)
Interior: 42"W x 65.5"H x 27.4"D



**MAXIMUM
STORAGE
SPACE**

Nearly 6' high and
4' wide interior to
accommodate all
your gear and guns!

No. 95072

SEE OUR FULL LINE OF
SQUARE-LOK™
ACCESSORIES
SEE PAGES 44-45

***IMPORTANT:** Do not store loaded firearms in any safe or lock box. Follow local, state and federal laws for firearm storage and transport. Check TSA regulations and airline policies before traveling with any portable safe. Check dimensions of your firearm against safe's internal dimensions. Firearm and firearm accessories not included.



SQUARE-LOK™ Accessories

Maximize the space in your safe, gun room or work bench with the revolutionary Square-Lok™ modular organizing system. Accessories lock in easily and hold firmly for countless storage configurations. Choose the pieces you need and the arrangement that works best for you.

① Gun Racks

There's no dead space with these racks, which store up to six handguns and five long guns in the spaces between. PVC coating protects firearms.

U.S. Patent US11561066

2-Gun No. 95792

4-Gun No. 95793

6-Gun No. 95794



② Rechargeable Gun Safe Dehumidifier

Absorb humidity and prevent rust or mildew in gun safes and other enclosed areas. Moisture-control crystals change from blue to pink when unit needs recharging.

No. 95900

③ Parts Bin

No more misplacing smaller items. This bin keeps small parts organized and close at hand.

No. 95791

④ Wire Shelf

Constructed of PVC-coated steel. Notched perimeter supports rifle barrels. 25 pound weight capacity. 9" x 9"

No. 95790

⑤ Digital Hygrometer

Large touchscreen displays high/low for temperature and humidity in Fahrenheit or Celsius. Install quick-connect bracket on interior door or wall of safe or vault room, or use fold-out stand. Requires two AAA batteries (not included).

No. 95909



Square-Lok™ Long Gun Horizontal Hook Set

No. 95786

***IMPORTANT:** Do not store loaded firearms in any safe or lock box. Follow local, state and federal laws for firearm storage and transport. Check TSA regulations and airline policies before traveling with any portable safe. Check dimensions of your firearm against safe's internal dimensions. Firearm and firearm accessories not included.



① **9" x 9" Metal Shelf**

Weight capacity of 25 pounds when evenly distributed.

No. 95780

② **12" x 12" Metal Shelf**

Weight capacity of 25 pounds when evenly distributed.

No. 95781

③ **Square-Lok™ Drawer
12" W X 12" D X 6" H**

Ball bearing drawer slides provide stable and smooth operations. Capacity of 40 pounds when evenly distributed.

No. 95783

④ **Square-Lok™ Bin
12" W x 4.5" D x 4.5" H**

Removable foam insert cradles handgun and rifle magazines or remove for larger items like binoculars, tools or other equipment.

No. 95782



⑤ **Square-Lok™
Pistol Rack Single - Vertical**

Designed to hold most handguns in a vertical orientation. PVC coating won't scratch or damage handgun finish.

No. 95784

⑥ **Square-Lok™
Long Gun Vertical
Support Kit**

Patent pending dual-purpose gun rack uses space between barrel rests to accommodate up to four handguns. Includes one 12" x 12" support shelf and one PVC coated barrel rest/gun rack. Support shelf locks into Square-Lok panels with integrated hooks and expanding nut grommets. Deep standoffs provide room for larger diameter scopes and tall turrets.

No. 95785

⑦ **Square-Lok™ Panels**

Ideal for displaying prized firearms or providing convenient access to tools and gear. Mount vertically or horizontally and adjoin to other panels to build a wall of Square-Lok panels.

**12" W X 18" H
No. 95787**

**18" W X 36" H
No. 95788**

***IMPORTANT:** Do not store loaded firearms in any safe or lock box. Follow local, state and federal laws for firearm storage and transport. Check TSA regulations and airline policies before traveling with any portable safe. Check dimensions of your firearm against safe's internal dimensions. Firearm and firearm accessories not included.

Safe Accessories



Rechargeable Gun Safe Dehumidifier

Absorb humidity and prevent rust or mildew in gun safes and other enclosed areas. Moisture-control crystals change from blue to pink when unit needs recharging. Recharge by plugging into 110V electrical outlet.

No. 95900



Install quick-connect bracket on interior door or wall of safe or vault room.



Gun Safe Dehumidifier Rod



Just plug it in for a permanent, maintenance-free solution for humidity control in gun safes and small enclosures. Dehumidifier Rod minimizes condensation, mildew and dampness. Coverage is approximately 100 cubic feet. Quick-change plugs allows easy installation.

12-inch No. 95903



Digital Hygrometer

Large touchscreen displays high/low for temperature and humidity in Fahrenheit or Celsius. Install quick-connect bracket on interior door or wall of safe or vault room, or use fold-out stand. Requires two AAA batteries (not included).

No. 95909

SQUARE-LOK™
ACCESSORIES
SEE PAGES 44-45

Wireless Hygrometer

Remote sensor measures temperature and humidity inside your safe. Hygrometer features a large touchscreen and displays high/low in either Fahrenheit or Celsius at both the base and remote units. Use the integrated stand or mount with magnets, hanging hole or Square-Lok™ mount.

No. 95907



***IMPORTANT:** Do not store loaded firearms in any safe or lock box. Follow local, state and federal laws for firearm storage and transport. Check TSA regulations and airline policies before traveling with any portable safe. Check dimensions of your firearm against safe's internal dimensions. Firearm and firearm accessories not included.

TEST BARREL BALLISTICS

CRITICAL DUTY®				Velocity (fps)			Energy (ft/lb)		
CARTRIDGE	BULLET	No.	BARREL LENGTH	MUZZLE	50 yds	100 yds	MUZZLE	50 yds	100 yds
9mm Luger + P	124 gr. FlexLock®	90215	4"	1175	1081	1012	380	322	282
9mm Luger	135 gr. FlexLock®	90235	4"	1010	960	918	306	276	253
9mm Luger + P	135 gr. FlexLock®	90225	4"	1070	1008	958	343	304	275
357 Sig	135 gr. FlexLock®	91295	4"	1225	1102	1016	450	364	309
357 Magnum	135 gr. FlexLock®	90515	8"	1275	1150	1059	487	396	336
40 S&W	175 gr. FlexLock®	91375	4"	1010	948	899	396	350	314
10mm Auto	175 gr. FlexLock®	91255	5"	1150	1052	981	523	437	381
45 Auto + P	220 gr. FlexLock®	90925	5"	975	927	887	464	420	384

CRITICAL DEFENSE®				Velocity (fps)			Energy (ft/lb)		
CARTRIDGE	BULLET	No.	BARREL LENGTH	MUZZLE	50 yds	100 yds	MUZZLE	50 yds	100 yds
380 Auto	90 gr. FTX®	90080	4"	1000	912	845	200	166	143
9 x 18 mm Makarov	95 gr. FTX®	91000	4"	1000	913	846	211	176	151
9mm Luger	100 gr. FTX® Lite	90240	4"	1125	1003	922	281	224	189
9mm Luger	115 gr. FTX®	90250	4"	1135	1025	949	329	268	230
38 Special	110 gr. FTX®	90310	4"	1010	939	882	249	215	190
38 Special	90 gr. FTX® Lite	90300	4"	1080	962	881	350	277	233
38 Special + P	110 gr. FTX®	90311	4"	1090	996	928	290	242	210
357 Magnum	125 gr. FTX®	90500	8"	1500	1312	1163	624	478	376
40 S&W	165 gr. FTX®	91340	4"	1170	1059	981	502	411	353
44 Special	165 gr. FTX®	90700	7½"	1160	1038	956	493	395	335
45 Auto	185 gr. FTX®	90900	5"	1000	935	883	411	359	320
45 Colt	185 gr. FTX®	92790	7¼"	1160	1049	972	553	452	388

TRAINING™ HANDGUN				Velocity (fps)			Energy (ft/lb)		
CARTRIDGE	BULLET	No.	BARREL LENGTH	MUZZLE	50 yds	100 yds	MUZZLE	50 yds	100 yds
9mm Luger	115 gr. FMJ Training	90269	4"	1135	1032	959	329	272	235
9mm Luger	135 gr. FMJ Training	90238	4"	1010	960	918	306	276	253
9mm Luger	135 gr. CrimpLock Training™	90222	4"	1010	960	918	306	276	253
357 Sig	135 gr. FMJ Training	91298	5"	1210	1091	1008	439	357	305
40 S&W	175 gr. FMJ Training	91374	4"	1010	948	899	396	350	314
45 Auto	220 gr. FMJ Training	90924	4"	900	863	829	396	363	336
9mm Luger	90 gr. Frangible Training	90230	4"	1300	1124	1011	338	253	204
357 Sig	90 gr. Frangible Training	91285	4"	1440	1209	1056	414	292	223
40 S&W	125 gr. Frangible Training	91319	4"	1210	1069	977	406	317	265
45 Auto	145 gr. Frangible Training	90931	5"	1130	974	878	411	305	248

223 REM		Velocity (fps)						Energy (ft/lb)					Trajectory Tables (inches)						
BULLET	No.	MUZ	100 yd	200 yd	300 yd	400 yd	500 yd	MUZ	100 yd	200 yd	300 yd	400 yd	500 yd	MUZ	100 yd	200 yd	300 yd	400 yd	500 yd
53 gr. TAP Patrol®	80295	3335	2757	2248	1797	1418	1141	1309	895	595	380	237	153	-1.5	0	-3.1	-13.3	-34.4	-73.1
55 gr. TAP Urban®	83276	3220	2837	2485	2159	1859	1589	1266	983	754	569	422	308	-1.5	0	-2.9	-11.4	-27.5	-53.7
60 gr. TAP Urban®	83286	3110	2749	2417	2108	1823	1867	1289	1007	778	592	443	327	-1.5	0	-3.1	-12.3	-29.3	-56.8
62 gr. TAP® Barrier™	83285	3050	2699	2375	2073	1796	1546	1239	971	751	573	430	319	-1.5	0	-3.3	-12.8	-30.5	-59
75 gr. BTHP TAP®	80265	2785	2557	2340	2134	1939	1755	1292	1089	912	759	626	513	-1.5	0	-3.8	-14.1	-31.9	-59.1

5.56 NATO		Velocity (fps)						Energy (ft/lb)					Trajectory Tables (inches)						
BULLET	No.	MUZ	100 yd	200 yd	300 yd	400 yd	500 yd	MUZ	100 yd	200 yd	300 yd	400 yd	500 yd	MUZ	100 yd	200 yd	300 yd	400 yd	500 yd
53 gr. TAP Patrol® (20" Bbl)	81275	3310	2736	2229	1781	1404	1133	1289	881	585	373	232	151	-1.5	0	-3.2	-13.6	-35.1	-74.5
62 gr. TAP® Barrier™ (20" Bbl)	8125C	3085	2725	2393	2085	1801	1546	1310	1022	788	598	446	329	-1.5	0	-3.2	-12.6	-30	-58.2
70 gr. TAP® Barrier™ (20" Bbl)	81265	2900	2637	2389	2154	1934	1728	1307	1081	887	721	581	464	-1.5	0	-3.5	-13.1	-30.3	-56.8
75 gr. BTHP T2 TAP® (20" Bbl)	8126N	2885	2626	2382	2151	1934	1731	1386	1149	945	771	623	499	-1.5	0	-3.6	-13.3	-30.5	-57.1
75 gr. TAP® SBR (11.5 Bbl)	81295	2310	1965	1654	1388	1179	1042	889	643	456	321	231	181	-1.5	0	-7.6	-28	-66.7	-130.3

300 BLACKOUT		Velocity (fps)						Energy (ft/lb)					Trajectory Tables (inches)						
BULLET	No.	MUZ	100 yd	200 yd	300 yd	400 yd	500 yd	MUZ	100 yd	200 yd	300 yd	400 yd	500 yd	MUZ	100 yd	200 yd	300 yd	400 yd	500 yd
110 gr. TAP Urban® (16 Bbl)	80885	2370	2089	1830	1594	1386	1215	1372	1066	818	620	469	361	-1.5	0	-6.5	-23.5	-54.2	-103.2
111gr. Monoflex® TAP® SBR® (16" Bbl)	80865	2135	1714	1365	1117	977	887	1123	724	459	307	235	194	-1.5	0	-10.5	-40	-97.2	-190.8
190 gr. Sub-X® TAP® (16" Bbl)	80895	1050	998	955	918	885	856	465	420	384	355	331	309	-1.5	0	-33.4	-104.9	-217.7	-375.1



TEST BARREL BALLISTICS

6MM ARC			Velocity (fps)					Energy (ft/lb)					Trajectory Tables (inches)						
BULLET	No.	MUZ	100 yd	200 yd	300 yd	400 yd	500 yd	MUZ	100 yd	200 yd	300 yd	400 yd	500 yd	MUZ	100 yd	200 yd	300 yd	400 yd	500 yd
80 gr. TAP Urban®	81615	3020	2788	2569	2359	2160	1970	1620	1381	1172	989	829	689	-1.5	0	-3	-11.3	-25.8	-47.8
106 gr. TAP®	81605	2610	2459	2314	2173	2038	1907	1603	1424	1260	1112	977	856	-1.5	0	-4.3	-15	-33.2	-59.7

6.5 CREEDMOOR			Velocity (fps)					Energy (ft/lb)					Trajectory Tables (inches)						
BULLET	No.	MUZ	100 yd	200 yd	300 yd	400 yd	500 yd	MUZ	100 yd	200 yd	300 yd	400 yd	500 yd	MUZ	100 yd	200 yd	300 yd	400 yd	500 yd
100 gr. TAP® Heavy Barrier™	81515	3200	2978	2768	2568	2376	2192	2274	1970	1702	1464	1253	1067	-1.5	0	-2.4	-9.4	-21.7	-40.1
140 gr. TAP® Heavy Barrier™	81485	2675	2425	2188	1965	1757	1566	2224	1827	1488	1200	959	762	-1.5	0	-4.4	-16.2	-37	-69.1
147 gr. Match TAP Precision®	81505	2695	2567	2443	2323	2206	2092	2370	2151	1948	1761	1587	1428	-1.5	0	-3.8	-13.4	-29.5	-52.7

308 WIN			Velocity (fps)					Energy (ft/lb)					Trajectory Tables (inches)						
BULLET	No.	MUZ	100 yd	200 yd	300 yd	400 yd	500 yd	MUZ	100 yd	200 yd	300 yd	400 yd	500 yd	MUZ	100 yd	200 yd	300 yd	400 yd	500 yd
110 gr. TAP Urban®	80896	3160	2826	2516	2226	1956	1707	2439	1950	1546	1210	934	712	-1.5	0	-2.9	-11.3	-26.8	-51.4
155 gr. Match TAP Precision®	80905	2785	2589	2401	2222	2050	1886	2669	2307	1985	1699	1446	1224	-1.5	0	-3.7	-13.4	-30.2	-55.4
165 gr. TAP® Heavy Barrier	80985	2610	2413	2224	2044	1872	1711	2496	2132	1812	1530	1284	1072	-1.5	0	-4.5	-16	-35.9	-65.8
168 gr. TAP Precision®	80965	2680	2494	2316	2145	1981	1825	2679	2320	2000	1715	1464	1242	-1.5	0	-4.1	-14.7	-32.9	-59.9
168 gr. Match TAP Precision®	80725	2710	2540	2376	2218	2066	1920	2739	2406	2105	1835	1592	1375	-1.5	0	-3.9	-14	-31.1	-56.4
168 gr. Match TAP AR™	80715	2670	2501	2339	2182	2031	1887	2659	2333	2040	1776	1539	1329	-1.5	0	-4.1	-14.5	-32.3	-58.5

300 WIN MAG			Velocity (fps)					Energy (ft/lb)					Trajectory Tables (inches)						
BULLET	No.	MUZ	100 yd	200 yd	300 yd	400 yd	500 yd	MUZ	100 yd	200 yd	300 yd	400 yd	500 yd	MUZ	100 yd	200 yd	300 yd	400 yd	500 yd
178 gr. Match TAP Precision®	82045	2960	2788	2622	2462	2308	2159	3463	3071	2717	2396	2106	1843	-1.5	0	-3	-11	-24.8	-45.2

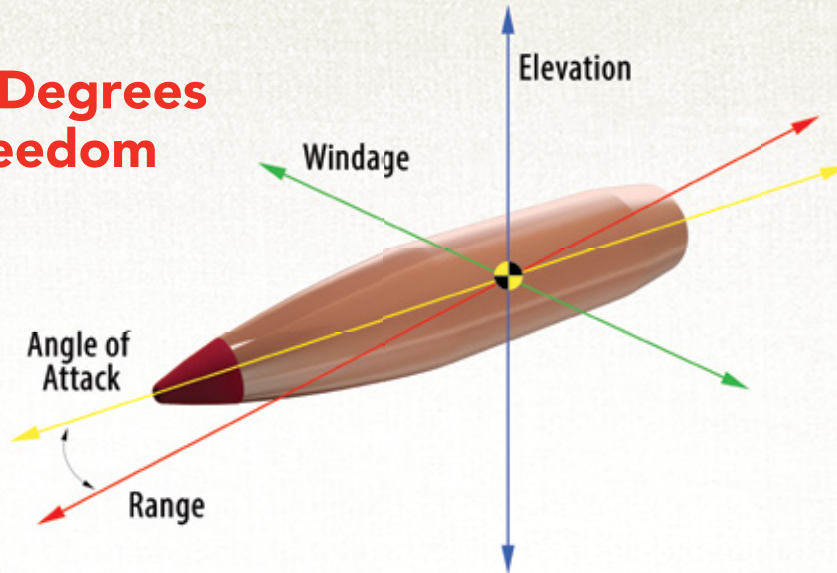
300 PRC			Velocity (fps)					Energy (ft/lb)					Trajectory Tables (inches)						
BULLET	No.	MUZ	100 yd	200 yd	300 yd	400 yd	500 yd	MUZ	100 yd	200 yd	300 yd	400 yd	500 yd	MUZ	100 yd	200 yd	300 yd	400 yd	500 yd
225 gr. Match TAP Precision®	81215	2810	2692	2577	2465	2356	2250	3945	3620	3318	3036	2773	2529	-1.5	0	-3.3	-11.9	-26.1	-46.7

RIFLE			Velocity (fps)					Energy (ft/lb)					Trajectory Tables (inches)							
CARTRIDGE	BULLET	No.	MUZ	100 yd	200 yd	300 yd	400 yd	500 yd	MUZ	100 yd	200 yd	300 yd	400 yd	500 yd	MUZ	100 yd	200 yd	300 yd	400 yd	500 yd
7.62x39	111 gr. MonoFlex® TAP SBR®	80785	2350	1898	1510	1209	1026	921	1361	888	562	360	260	209	-1.5	0	-8.3	-32.2	-79.9	-160.4
7.62mm	175 gr. HPBT	80998M	2525	2349	2180	2018	1863	1717	2477	2144	1846	1582	1349	1145	-1.5	0	-4.8	-17	-37.7	-68.4
338 Lapua Mag	250 gr. BTHP® (24" Bbl)	8230	2850	2712	2579	2449	2323	2201	4509	4083	3691	3330	2996	2689	-1.5	0	-3.2	-11.7	-26	-46.7
338 Lapua	285 gr. Match (24" Bbl)	82300	2745	2630	2519	2410	2304	2200	4768	4378	4015	3676	3359	3064	-1.5	0	-1.8	-7.2	-20.5	-40.3
338 Lapua Mag	300 gr. HPBT	82319	2625	2502	2383	2267	2154	2044	4590	4170	3782	3423	3090	2783	-1.5	0	-4.1	-14.2	-31.2	-55.7
50 BMG	750 gr. A-Max® (36" Bbl)	8270	2810	2722	2637	2552	2470	2389	13149	12342	11576	10849	10158	9502	-1.5	0	-3.2	-11.4	-24.9	-44.2

TRAINING™ RIFLE			Velocity (fps)					Energy (ft/lb)					Trajectory Tables (inches)							
CARTRIDGE	BULLET	No.	MUZ	100 yd	200 yd	300 yd	400 yd	500 yd	MUZ	100 yd	200 yd	300 yd	400 yd	500 yd	MUZ	100 yd	200 yd	300 yd	400 yd	500 yd
5.56 NATO	45 gr. Frangible Training (20" Bbl)	81251	3050	2237	1571	1118	920	805	929	500	247	125	85	65	-1.5	0	-5.8	-26.2	-74.3	-163.5
223 Rem	55 gr. SP Training	80255	3240	2823	2443	2093	1774	1493	1282	973	728	535	384	272	-1.5	0	-2.9	-11.7	-28.5	-56.4
223 Rem	55 gr. FMJ-BT Training	80275	3240	2836	2467	2126	1816	1537	1282	982	743	552	403	288	-1.5	0	-2.9	-11.5	-27.6	-54.9
223 Rem	55 gr. FMJ Training	80271	3240	2837	2468	2128	1817	1540	1282	983	744	553	403	290	-1.5	1.4	0	-7.2	-22.1	-47.7
5.56 NATO	55 gr. FMJ Training (20" Bbl)	81278	3240	2837	2468	2128	1817	1540	1282	983	744	553	403	290	-1.5	1.4	0	-7.2	-22.1	-47.7
5.56 NATO	57 gr. FMJ Training (20" Bbl)	81261	3150	2485	1911	1435	1109	946	1256	782	462	261	156	113	-1.5	0	-4.3	-18.4	-49.7	-109.2
5.56 NATO	75 gr. TAP SBR® Training (20" Bbl)	81292	2310	2105	1911	1728	1560	1408	888	738	608	497	405	330	-1.5	0	-6.4	-22.3	-49.9	-91.8
300 Blackout	110 gr. NTX® Training (16" Bbl)	80864	2080	1726	1422	1186	1036	942	1057	728	494	344	262	217	-1.5	0	-10.3	-38	-90.4	-175.1
300 Blackout	220 gr. HPBT Subsonic	80859	1050	1009	975	945	918	893	539	498	464	436	411	390	-1.5	0	-32.6	-101.8	-209.9	-359.5

An explanation of the Hornady® 4DOF® Ballistic Calculator:

Four Degrees of Freedom



Why compare the flight of your bullet to a standard G1 or G7 projectile when you can use your own projectile as the standard?

Most ballistic calculators consider three degrees of freedom: windage, elevation, and range. The Hornady® Ballistic Calculator with 4DOF® (Four Degrees of Freedom) also incorporates the projectile's movement about its center of gravity and angle relative to line of flight.

Its trajectory solutions are based on projectile drag coefficient (not ballistic coefficient), along with exact physical modeling of the projectile, its mass and aerodynamic properties. It also correctly calculates aerodynamic jump, a bullet's vertical shift as it encounters a crosswind.

Using Doppler radar, Hornady engineers calculated exact drag versus velocity curves for each bullet in the database, making the 4DOF® calculator more accurate at longer ranges than BC-based systems or custom drag curves with limited data.

New in-app features give shooters the edge.

GROUP ANALYSIS:

Allows users to capture group analytics such as raw group size, group size in MOA, mean radius, and group mean point of impact distance from point of aim. Analyzed targets can be saved, shared, and used to set rifle zero angle.

SHARE PROFILE

This feature lets the user share their exact favorite profile with another 4DoF user.

RANGE CARD:

Lets the user input target and environmental data for an infinite number of targets and then allows the shooter to view trajectory solutions quickly for each.

Find the free Hornady® Ballistic Calculator with 4DOF® at hornady.com/4DOF or download from the Apple or Android app stores.



KESTREL® 5700 BALLISTICS WEATHER METER WITH HORNADY® 4DOF®

The Kestrel with Hornady 4DOF® is a comprehensive, weather-proof ballistics meter built for unprecedented accuracy and uncompromising performance even in harsh environments.

EXTREMELY RUGGED AND DURABLE

Kestrel meters are waterproof, dust proof and drop-tested to military standards.

EASY OPERATION FOR OUTDOOR USE

Large buttons make it easy to navigate screens and input information even with gloves. The bright, clear backlit display is readable in direct sunlight or low light situations.

LONG-LASTING POWER

Powered by one AA lithium battery, expect hundreds of hours of use for a reliable tool that won't quit when you need it most.

For more information and to purchase, go to hornadykestrel.com



PO Box 1848
 Grand Island, NE 68802
 1-308-382-1390
 Fax: 308-382-5761
 www.hornadyLE.com



THE HORNADY PODCAST

New Episodes Released Every Week!

We've got some of the biggest names in the industry as well as the leading innovators of bullet technology locked, loaded and ready to deliver the goods on the topics that interest you most.

POPULAR EPISODES

EP.8 300 PRC

EP.12 6mm ARC

EP.96 22 ARC

WATCH, LISTEN, AND SUBSCRIBE AT HORNADY.COM/PODCAST ►►



FREE HORNADY® BALLISTIC APP WITH 4DOF®

DOWNLOAD TODAY
 FOR YOUR MOBILE DEVICE



SCAN TO
 LEARN MORE