

## INSTRUCTIONS



**Hornady**<sup>®</sup>

*Accurate. Deadly. Dependable.*

# VERSA-PRIME™ BENCH PRIMING TOOL

Item No. 050096

**Thank you for purchasing the Hornady® Versa-Prime™ Bench Primer. Please read instructions before using. Contact 1-800-338-3220 with any questions.**

The Hornady® Versa-Prime™ Bench Primer is the most versatile bench mounted priming unit on the market. Tight tolerance, machined billet aluminum, and steel components provide an easy priming experience. Quick-change large and small primer conversions combined with an ambidextrous handle mounting system create a fast and ergonomic priming system. Add in the adjustable hard stop for controlled primer seating depth, making this unit the VIP of priming systems.



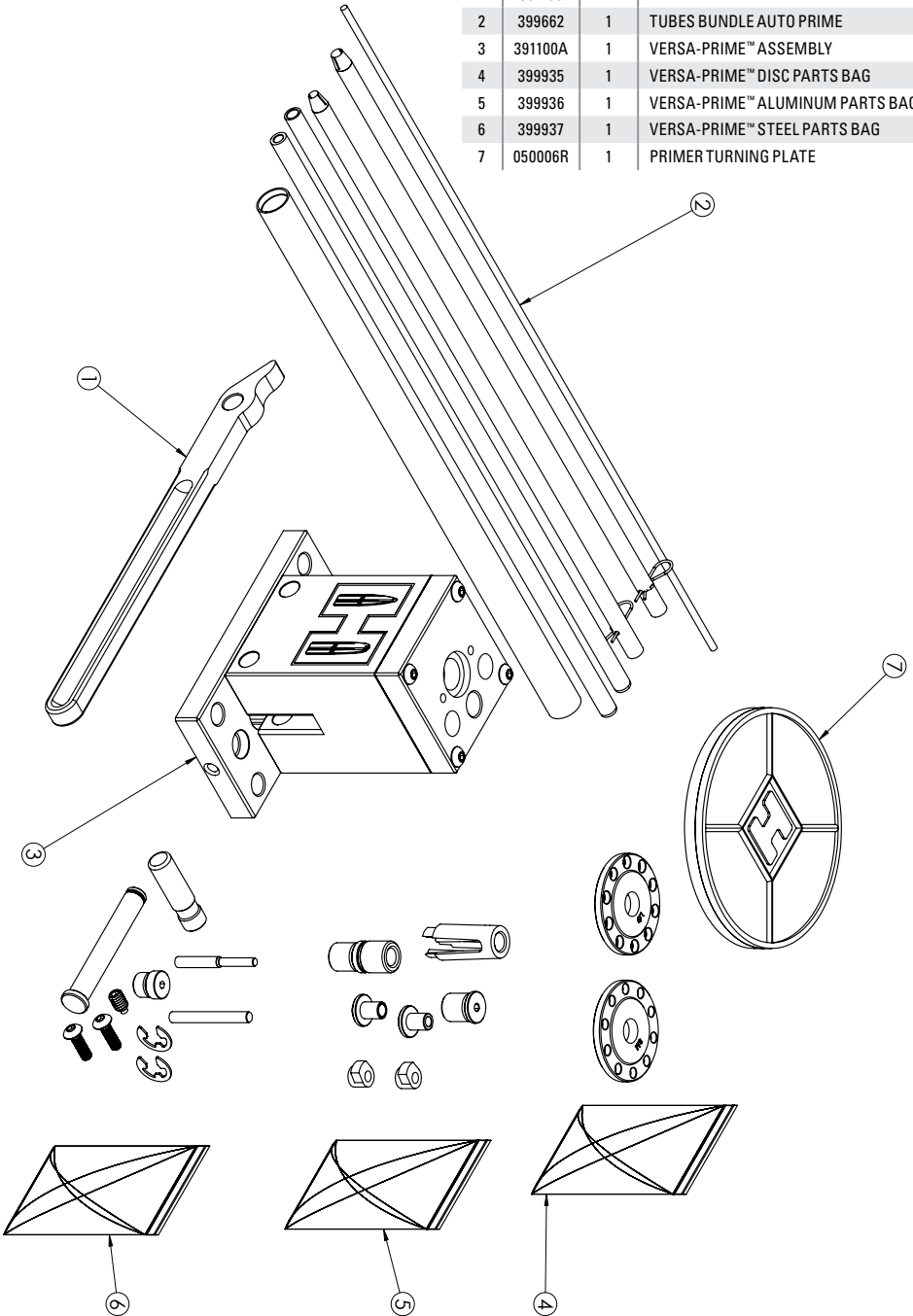
Instructional videos for Hornady® reloading products are available at [hornady.com](http://hornady.com).

# PACKAGE CONTENTS

If one of these items is missing, please contact Hornady at 1-800-338-3220.

# PACKAGE CONTENTS

Part	Part No.	Qty	Description
1	391103	1	VP HANDLE
2	399662	1	TUBES BUNDLE AUTO PRIME
3	391100A	1	VERSA-PRIME™ ASSEMBLY
4	399935	1	VERSA-PRIME™ DISC PARTS BAG
5	399936	1	VERSA-PRIME™ ALUMINUM PARTS BAG
6	399937	1	VERSA-PRIME™ STEEL PARTS BAG
7	050006R	1	PRIMER TURNING PLATE



## SAFETY NOTICE BEFORE ASSEMBLY OR OPERATION:

1. Always wear safety glasses when priming or handling primers.
2. Careless or improper handloading techniques can result in serious personal injury.
3. Primers are designed to explode and will do so when subjected to heat or percussion.
4. Keep away from children.
5. DO NOT smoke near primers.
6. DO NOT force primers during priming process. A single primer exploding will set off a chain reaction causing primers in the tray and vicinity to violently detonate.
7. DO NOT store or handle primers in bulk.
8. For identification and safety, keep primers in their original protective packaging.
9. An absolute minimum number of primers should be kept at the loading operation at any given time. Open only one package tray (100 primers) at a time.
10. DO NOT de-cap live primers.
11. DO NOT attempt to seat or re-seat a primer in a loaded round.
12. For large primers, use ONLY the large primer seater pin. For small primers, use ONLY the small primer seater pin.

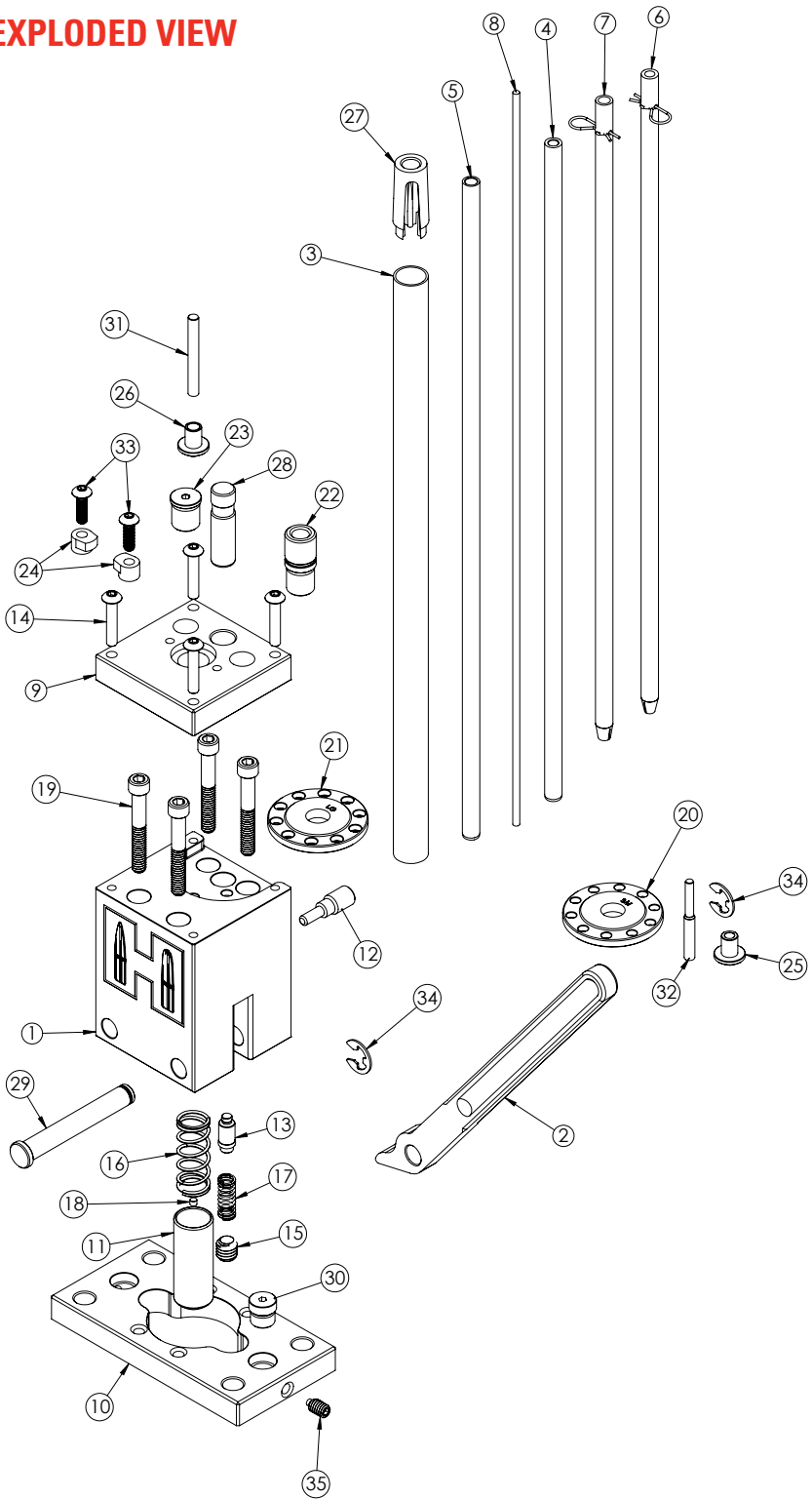
## PARTS LIST

Part	Part No.	Qty	Description
1	391100	1	VP BODY
2	391103	1	VP HANDLE
3	398322	1	TUBE PRIMER HOUSING AP™
4	398357	1	PRIMER TUBE SMALL PRESS
5	398358	1	PRIMER TUBE LARGE PRESS
6	398355	1	TUBE PRIMER PICKUP SMALL
7	398356	1	TUBE PRIMER PICKUP LARGE
8	398359	1	1/8" FIBERGLASS ROD 16"
9	391101	1	VP COVER PLATE
10	391102	1	VP BASE PLATE
11	391104	1	VP PLUNGER
12	391106	1	VP PLUNGER BOLT
13	391107	1	VP DETENT
14	392721	4	BHCS, 10-32X 1
15	399992	1	3/8-16 X 3/8 CUP-POINT SET SCREW
16	399994	1	VP PLUNGER SPRING
17	399995	1	VP DETENT SPRING
18	399996	1	VP MAGNET Ø1/8 X .1
19	399730	4	SHCS, 1/4-20 x 1-3/4
20	391110	1	VP PRIMER DISC SM
21	391111	1	VP PRIMER DISC LG
22	391112	1	VP PRIMER TUBE ADAPTER
23	391113	1	VP COVER PLUG
24	391114	2	VP SHELLHOLDER CLAMP
25	391117	1	VP PRIMER GUIDE SM
26	391118	1	VP PRIMER GUIDE LG
27	398318	1	SUPPORT PRIMER TUBE AP™
28	391105	1	VP PRIMER DISC PIN
29	391108	1	VP HANDLE PIN
30	391109	1	VP HANDLE STOP
31	391115	1	VP PRIMER PUNCH LG
32	391116	1	VP PRIMER PUNCH SM
33	399991	2	BHCS, 10-32 X 5/8
34	399997	2	E-CLIP FOR Ø3/8 O.D.
35	399993	1	SCREW SET NYLON TIPPED 1/4-20 X 3/8

**NOTE:** This unit was designed to be mounted to a reloading bench, so the first step is to select a location/position and mount the bench primer. Keep in mind that the full stroke of the handle must not have obstructions.

See the mounting diagram on back page of these instructions. Note that the hole locations of the bench primer match those of the Classic, AP, and Iron Press.

# EXPLODED VIEW



## SET UP

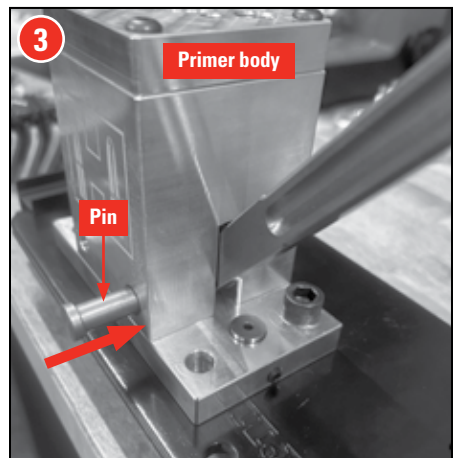
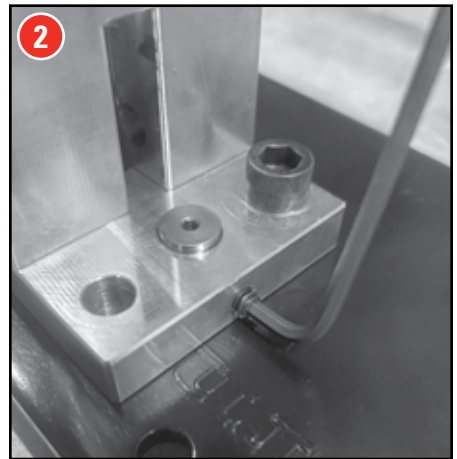
1. After the bench primer has been mounted to the reloading bench, the next step is to decide which side to mount the Handle (2) and thus the Bench Primer Handle Stop (30). Since the Bench Primer Handle Stop (30) needs to be installed on the same side as the handle, thread the Bench Primer Handle Stop into either the left or right side of the Bench Primer Base Plate (10).

**NOTE:** The handle stop is used to control the primer seating depth and will be set in a later step.

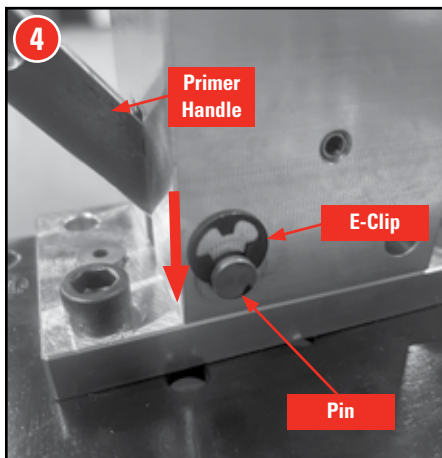
2. Find the 1/4-20 x 3/8 Nylon Tipped Set Screw (35) and thread into the side of the Primer Base Plate where the Bench Primer Handle Stop is located. Tighten set screw until it contacts the Bench Primer Handle Stop.

**NOTE:** The handle stop is used to control the primer seating depth and will be set in a later step.

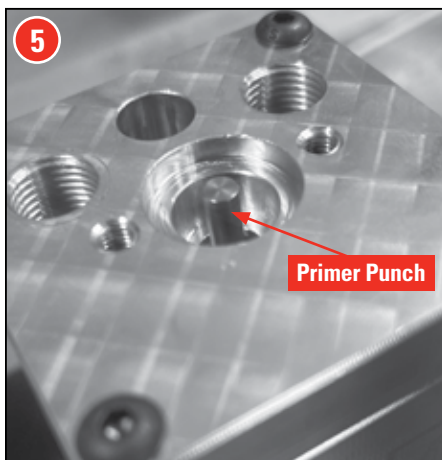
3. Once the Bench Primer Handle Stop has been installed, insert the Bench Primer Handle Pin (29) through the Primer Body (1) and the Primer Handle (2) until the head of the Bench Primer Handle Pin sits flush against the front of the Primer Body.



4. Once the Primer Handle Pin is sitting flush, attach the E-Clip (34) to ensure the Pin stays located on the Bench Primer Body.



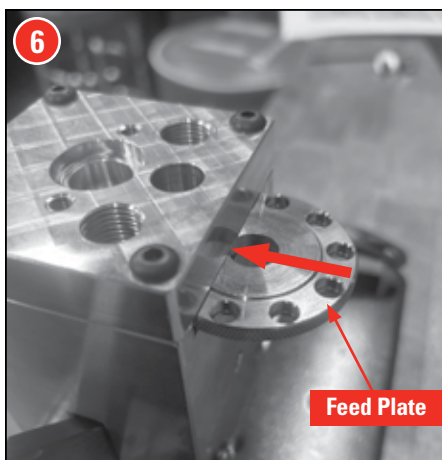
5. Based on the cartridge case you will be priming, select either the LG (31) or SM Primer Punch (32) and drop it vertically in the center hole of the Bench Primer Body.



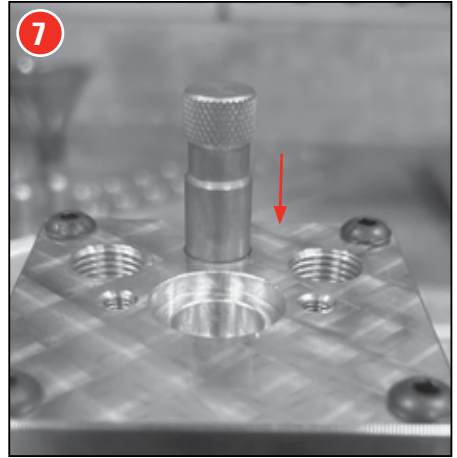
6. Select the corresponding Primer Feed Plate for either large or small primers. Use Primer Feed Plate SM (20) for small rifle primers and Primer Feed Plate LG (21) for large rifle primers.

Slide the corresponding Primer Feed Plate into the back of the unit so the step in the plate is facing up.

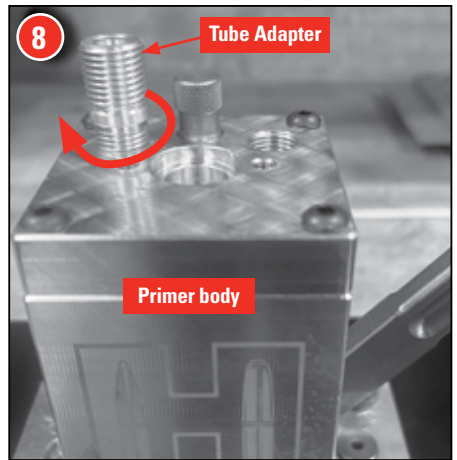
**NOTE:** Overcoming the spring detent force while inserting the Primer Feed Plate can be difficult. Do not be surprised at the amount of effort needed to insert the plate.



- When the Primer Feed Plate is installed, insert the Primer Feed Plate Pin (28) through the center of the Primer Feed Plate and down into the Primer Body. Rotate the Primer Feed Plate both counterclockwise and clockwise to ensure the click detents are functioning.

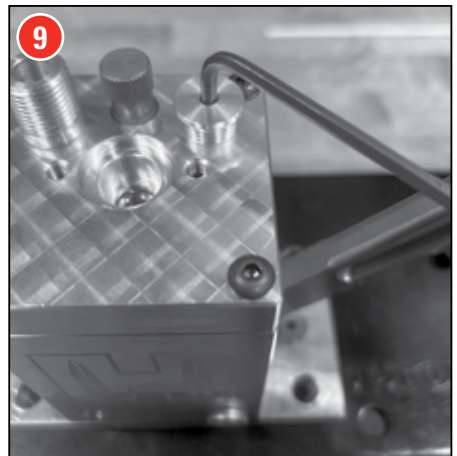


- Next step is to install the Primer Feed Tube Adapter (22) into one of the tapped holes. To determine which hole, decide which way you would like to rotate the feed plate when feeding primers. While looking at the lasered Hornady logo the tube adapter should be threaded in the right hole for a clockwise primer feed rotation, if counter clockwise primer feed rotation is desired, use the hole on left. Thread the Primer Feed Tube Adapter clockwise until it bottoms out on the surface of the Primer Body.

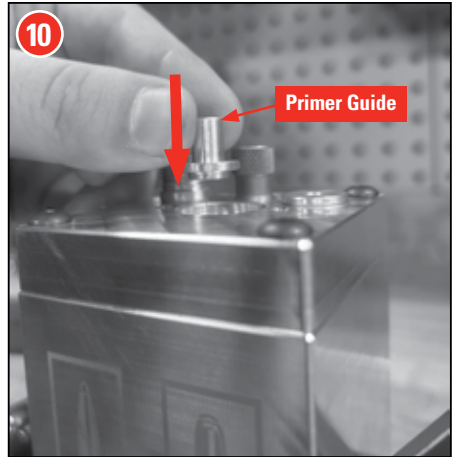


**NOTE:** While determining the rotation direction of the primer feed plate, keep in mind the primers should not be exposed at the back of the Versa Prime.

- Install the Primer Feed Tube Plug (23) into the other tapped hole. Use the Allen Wrench provided to tighten the Primer Tube Plug until it bottoms out on the surface of the Primer Body.

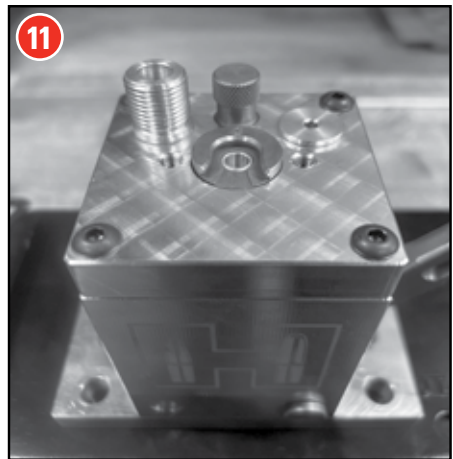


10. Depending on the type of cartridge case being primed, select either the Primer Guide SM (25) or the Primer Guide LG (26). Make sure the Guide matches the Primer Pin being used. Slide the Primer Guide into the Primer Body with the long end facing up.

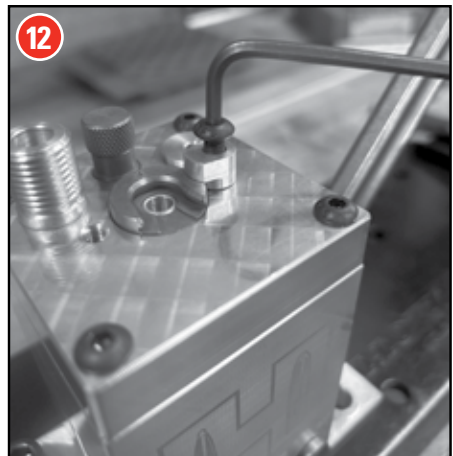


11. Select the appropriate Hornady Shell Holder (Not Included) and slide over the Primer Guide. Rotate the shell holder such that the shell holder number is oriented the correct direction.

**NOTE:** Only use Hornady Shell Holders. Failure to do so will void the warranty.



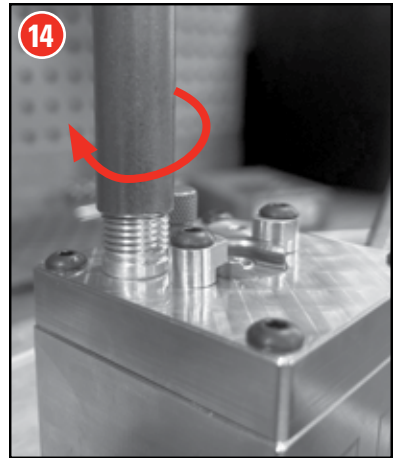
12. Obtain the two #10-32 x 5/8 Bolts (33) and the two Shell Holder Clamps (24) from the parts bag. Insert one Bolt through the top of one of the Shell Holder Clamps and start threading the Bolt into the Primer Body. Ensure that the "lip" of the Shell Holder Clamp is set to hold the shell holder in place.



13. Repeat previous step with the additional Bolt and Shell Holder Clamp. Alternate tightening the Bolts with the Allen Wrench provided. Make sure the shell holder does not move while the tightening process occurs.



14. Locate the Primer Tube Housing (3) and thread onto the Primer Feed Tube Adapter. Rotate the Primer Tube Housing until it stops on the Primer Body.



15. Select either the Primer Tube Large (4) or the Primer Tube Small (5) depending on the cartridge case being primed and insert the Primer Tube into the Primer Tube Adapter with the external stepped edge facing downward.

Make sure the Primer Tube sits fully into the Primer Tube Adapter; spilled primers will be the result if not completed.



16. Insert Primer Tube Support **(27)** into the Primer Tube Housing. The Support should sit flush with the Primer Tube selected.



17. Finally, insert the Fiberglass Rod **(8)** into the Primer Tube. Keep in mind that the Primer Turret will NOT ROTATE when the Primer Tube is out of primers and the Fiberglass Rod is inserted.



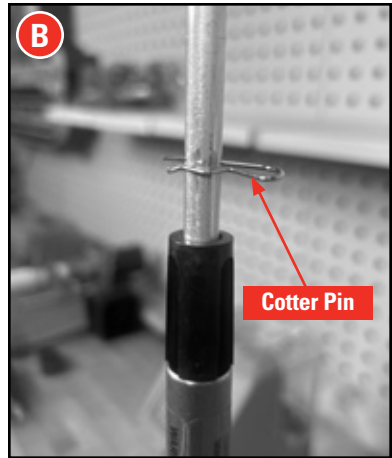
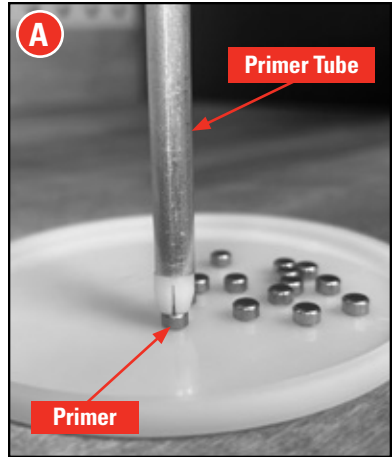
## READY TO PRIME

- A. Depending on the type of cartridge case that needs primed, use the Small Primer Pickup Tube (6) or the Large Primer Pickup Tube (7) and load primers using the tapered nose.

**NOTE:** *The primers need to be oriented with the anvil down and the shiny side up. Use the included primer turning plate achieve the correct orientation. Make sure the cotter pin is inserted into the tube.*

- B. Once the Primer Pickup Tube is filled with primers, remove the Fiberglass Rod from the Primer Tube. Align it with the Primer Tube using the Primer Tube Support and remove the cotter pin. The primers should fall into the primer tube. The capacity of the Primer Tube is 100 primers; **DO NOT overfill the Primer Tube.**

- C. Re-insert the Fiberglass Rod into the Primer Tube. Depending on which side the Primer Tube was mounted, the Primer Feed Plate will need to be rotated clockwise or counterclockwise to feed primers. If the Primer Tube is mounted on the right side of the unit, the Primer Feed Plate will need to be rotated clockwise. If the Primer Tube is mounted on the left side of the unit, the Primer Tube will need to be rotated counterclockwise.



- D. The Primer Feed Plate will need to be rotated two clicks for the primer to be centered under the Primer Punch. Moving the Handle (2) downward will move the primer upward into the shell holder.



- E. Grab a case that needs to be primed and slide it **ALL THE WAY** into the shell holder. If the case is not inserted completely into the shell holder, the Bench Primer will not function properly and could potentially set off a primer!



- F. Loosen the Nylon Tipped Set Screw, then unthread the Handle Stop until .050" is visible. The Primer Handle Stop will be used to set the seating depth of the primer in the case.



G. Slowly run the Handle downward until it reaches the Primer Handle Stop. At this point, the primer should seat into the case.



H. Primers need to be seated into a case from FLUSH TO .003" BELOW FLUSH the rim of the case. Most likely, the primer will need to be seated further into the primer pocket. Thread the Primer Handle Stop clockwise down into the Base Plate to INCREASE the seating depth.



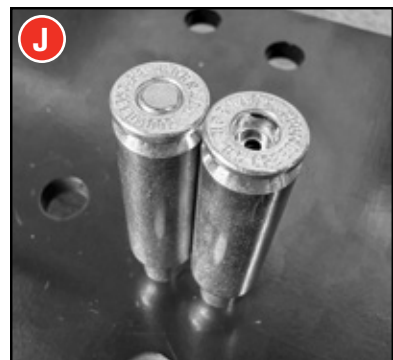
Repeat Step G and H as necessary until the primer is seated from FLUSH TO .003" BELOW FLUSH the rim of the case.

I. Once the primer seating depth has been set, use the Base Plate Set Screw to lock the Primer Handle Stop in place. This will create a consistent seating depth for the primers moving forward.



## **Now efficient priming can begin**

J. Rotate the Primer Feed Plate the correct direction (clockwise/ counterclockwise), insert another case into the shell holder, run the handle down to the Handle Stop to seat the primer, remove the case and check for seating depth. Repeat the process until the Fiberglass Rod STOPS the Primer Turret from rotating.



K. When the Fiberglass Rod STOPS the Primer Feed Plate from rotating, there are STILL TWO PRIMERS left in the Primer Feed Plate. Remove the Fiberglass Rod, rotate the Primer Feed Plate and seat the remaining primers.



## Removing Extra Primers

The easy way to remove extra primers from the unit is to rotate the Feed Plate as if a primer needed to be seated WITHOUT a case in the shell holder. Run the handle down until the primer protrudes from the top of the shell holder. With the handle depressed, slide the primer out of the shell holder and return it to the primer box. Repeat the process until all the primers are out of the unit.

## Changing Primer Feed Plate

Remove the Primer Feed Plate Pin by pulling upwards. Pull the Primer Feed Plate out from the Primer Body and replace it with the other Primer Feed Plate included.

Note that when the Primer Feed Plate is changed, the Primer Punch and Primer Punch Guide must also be changed.

## Removing the Shell Holders, Primer Punches and Primer Guides

Removing the shell holder is easy. Loosen the Shell Holder Clamps and rotate them outward, so the Shell Holder can be removed. Then, slide a case into the Shell Holder and simply lift it out.

Now that the Shell Holder is out, the Primer Guide is easy to remove. In many cases, it will come out inserted into the Shell Holder.

Now that both the Shell Holder and Primer Guide are removed, run the handle downward to move the Primer Punch upward. With the handle depressed, reach down and grab the Primer Punch.

## WARRANTY

All Hornady reloading tools and accessories are warranted against material defects and workmanship. Hornady electronic components are covered by a one-year warranty from the date of purchase.

This warranty is void if the product (1) has been damaged by accident or unreasonable use, neglect, improper service or other causes not arising out of defects in material or workmanship; or (2) has been altered or repairs have been made or attempted by other than authorized factory personnel; (3) is used commercially; or (4) has been altered or defaced in any way.

This warranty supersedes all other warranties for Hornady products either written or oral. No other warranty is expressed or implied.

## PRODUCT REGISTRATION AND SERVICE

You must register your product to obtain Warranty Service. Complete the registration form at [hornady.com/warranties](http://hornady.com/warranties).

## TO RECEIVE WARRANTY SERVICE

To report a warranty claim, call Hornady® at 800-338-3220 to request a return authorization number. Returns will not be accepted without prior return authorization by Hornady.®

## POST-WARRANTY SERVICE INFORMATION

For issues concerning service after the Limited Warranty expires, contact Hornady® at 800-338-3220.

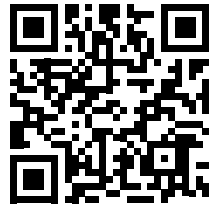
## PRODUCT SERIAL NUMBER AND REFERENCE INFORMATION

You must register your product in order to obtain warranty service. In the event you should need service for your product, please note the following information:

**Serial Number** \_\_\_\_\_

**Date Purchased** \_\_\_\_\_

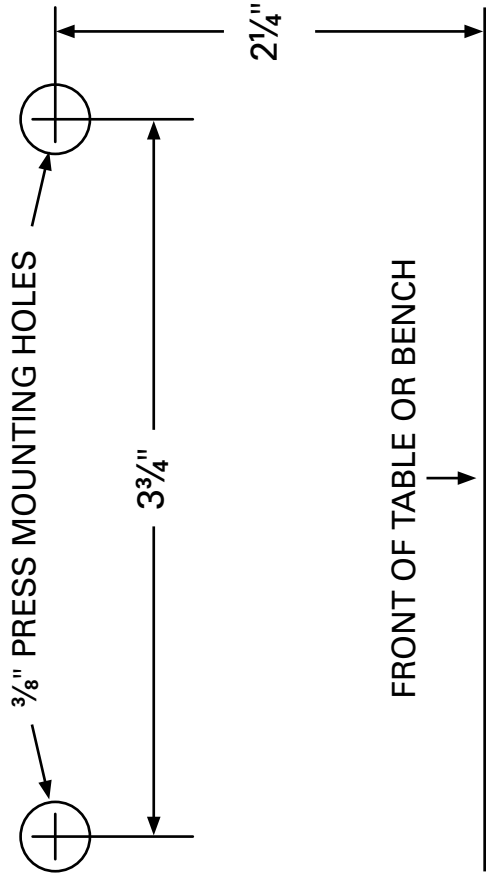
**Retailer** \_\_\_\_\_



*Scan to register your product to receive the full benefit of its warranty.*

# Mounting Template

Complete warranty page before using this template.



**Hornady**  
*Accurate. Deadly. Dependable.*

P.O. Box 1848, Grand Island, NE 68802-1848  
[hornady.com/contact](http://hornady.com/contact)