



Hornady®

LAW ENFORCEMENT
& MILITARY

2026 PRODUCT CATALOG



TEST PROTOCOL

BULLET VELOCITY

All trajectories and associated velocities are from SAAMI minimum specification test barrels. An Oehler 83 model 35 P with model 55 skyscreens was used for velocity measurements. Bullet velocity was measured at a distance of 15 feet from the muzzle. Down range velocities shown in the ballistic tables are calculated with an exterior ballistics computer program.

TRAJECTORY TABLES

Trajectories are calculated using a computer program. A (-) sign indicates the trajectory of the bullet is below the line of sight. A (+) sign indicates the trajectory of the bullet is above the line of sight. All trajectories were calculated for standard atmosphere (Sea level, 59° Fahrenheit, 29.92" Hg, .07647 lb./cu ft. density).

10% BALLISTIC GELATIN TESTS

The tissue simulant utilized in FBI ballistic tests is Kind & Knox or Vyse 250-A ordnance gelatin. The mixture is 10%, by weight. Properly calibrated 10% ordnance gelatin is a reliable tissue simulant. Validation of ballistic gelatin is conducted by firing a .177" steel BB at 590 feet per second (fps), plus or minus 15 fps, into the gelatin, resulting in 8.5 centimeters (cm), plus or minus 1 cm, penetration (2.95" - 3.74"). All gelatin was stored at 40°F until just prior to testing. The gelatin was placed 10 feet from the muzzle of the test weapon (unless otherwise noted).

LOCATION:

Hornady® Manufacturing
Ballistic Laboratory
Grand Island, Nebraska

ELEVATION:

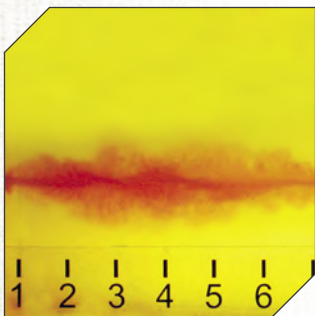
1,800 feet ASL

TEMPERATURE:

74°

All terminal testing is from actual firearms. The gelatin images represent one fired test shot. The data represents an average of five fired test shots. Individual results may vary.

BARRIER SUBSTRATES



BARE GELATIN

Made in accordance with standard FBI protocol (10% ordnance gelatin).



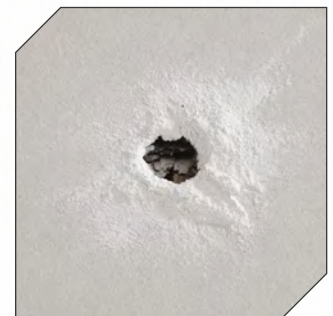
HEAVY CLOTHING

The gelatin block is covered with four layers of clothing: one layer of cotton t-shirt material (approximately 5.25 ounces per yard, 48 threads per inch); one layer of cotton shirt material (approximately 3.5 ounces per yard, 80 threads per inch); one layer of Malden Mills Polartec 200 fleece and one layer of cotton denim (approximately 14.4 ounces per yard, 50 threads per inch).



STEEL*

Two pieces of 20 gauge, hot-rolled steel with a galvanized finish are set three inches apart. The clothing covered gelatin block is placed 18 inches behind the rear most piece of steel. This test event simulates the weakest part of a car door.



WALLBOARD*

Two pieces of ½ inch standard gypsum board are set 3.5 inches apart. The gelatin block is placed 18 inches behind the rear most piece of gypsum. This test event simulates a typical building interior wall.

**Tests 3-6 utilize light clothing (e.g. the cotton t-shirt and dress shirt materials mentioned above), in addition to the mentioned intermediate barrier.*

TABLE OF CONTENTS

BARRIER TESTING

Standard FBI protocol measures the penetration performance of a cartridge's projectile through a series of six tests. Measurements are taken of the depth of penetration to the nearest .25 inch (consistent penetration of 12-18"), expansion of the projectile, and retained weight of the projectile.

Tests One through Six are shot at a distance of 10 feet from the muzzle to the front face of the gelatin block, unless otherwise noted.

For a comprehensive report detailing all ammunition performance, please request the link to download the Hornady® Ammunition Test Report and Application Guide by going to hornadyle.com.



PLYWOOD*

One piece of 3/4 inch "AA" fir plywood is set 18 inches in front of the gelatin block. This test event simulates the resistance of typical wooden doors or construction timbers.



AUTOMOBILE GLASS*

One piece (15"x 18") of A.S.I. 1/4 inch laminated automobile safety glass is set at an angle of 45° to the horizontal and 15° to the side, resulting in a compound angle. The gelatin block is placed 18 inches behind the glass. This test event simulates a shot taken at the driver of a car from the left front quarter of the vehicle.

THE ANATOMY OF A HORNADY® BULLET	2
THE ANATOMY OF A HORNADY® CARTRIDGE	3
AMMO GUIDE	4
CRITICAL DUTY®	6
223 REM	12
5.56 NATO	14
6MM ARC	16
6.5 CREEDMOOR	18
300 BLACKOUT	19
308 WIN	20
7.62X39	22
300 WIN MAG & 300 PRC	23
338 ARC	24
338 LAPUA MAG	25
50 BMG	26
OTM & OTM-A®	27
HANDGUN TRAINING™	28
RIFLE TRAINING™	29
SHOTGUN	30
HORNADY SECURITY®	32
ACCESSORIES	37
TEST BARREL BALLISTICS	38
HORNADY BALLISTICS APP WITH 4DOF®	40



VIEW CATALOG ONLINE

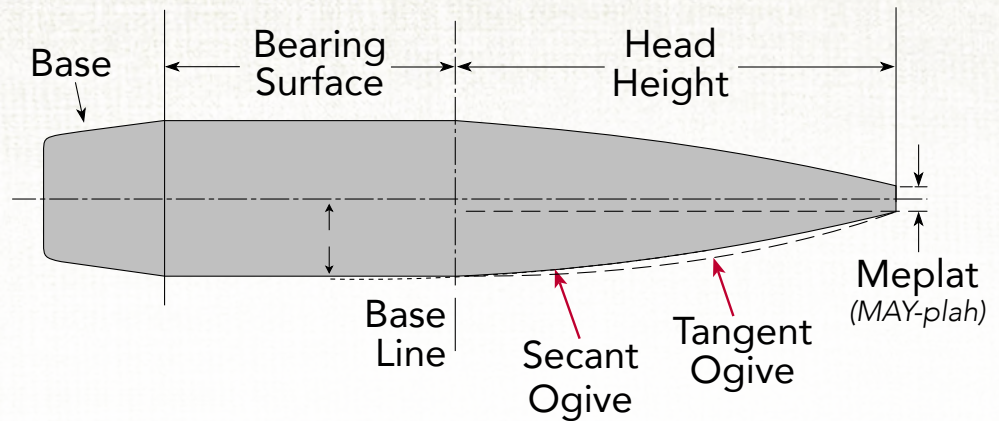


For a complete list of Hornady® patents and trademarks visit our website at hornady.com/support/patents.

©2026 Hornady® Law Enforcement & Military



THE ANATOMY OF A HORNADY® BULLET



SECANT OGIVE DESIGN

Pioneered by Hornady®, this technology broke new ground in ballistic engineering and is now used in bullets for everything from match to varmint shooting. The secant ogive is a geometrically developed design that creates the most ballistically efficient profile, yet retains the optimum bearing surface. The combination of the slender point and increased bearing surface results in lower drag, increased stability, flatter trajectories, and amazing accuracy.

1. THE MEPLAT

Defined as “the diameter of the end of the tip of the projectile.” Careful attention is paid to the meplat because its diameter and uniformity contribute to the aerodynamic efficiency of the bullet.

2. THE TIP*

Hornady® is recognized as a world leader in bullet tip development. Although small, the tip has a bigger impact on overall performance than perhaps any other portion of the bullet. Innovations such as DVRT™ (Drag variability Reduction Technology) have led to breakthroughs in accuracy and aerodynamic efficiency. At extended range, the proper tip can reduce vertical stringing, retain downrange velocity and energy, and initiate expansion.

3. THE JACKET

Using advanced manufacturing processes and decades of bullet engineering experience, we precisely control jacket thickness for optimum controlled expansion. Our AMP® bullet jackets* have virtually zero runout and near zero wall thickness variation.

4. THE CORE

Hornady® bullets have three core varieties. First, the traditional swaged lead core provides uniformity and balance for consistent performance and accuracy. Second, the nontraditional lead-free core (NTX®) offers a phenomenal option when non-lead bullets are required. Lastly, our coreless monolithic one-piece copper alloy bullets won't separate and deliver deeper penetration.

5. THE CANNELURE*

The cannelure provides a consistent crimp location, and works with the InterLock® ring to control expansion. Cannelures are also found in select Hornady® bullet lines where semi-automatic or lever gun use is desired.

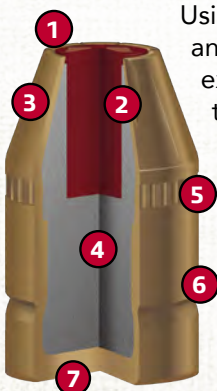
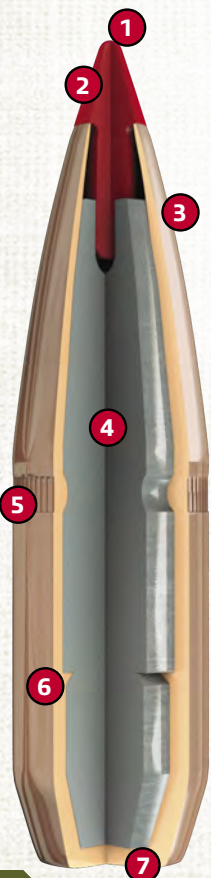
6. THE INTERLOCK® RING*

The raised InterLock® ring is embedded in the bullet's core, ensuring the core and jacket remain locked during expansion to retain mass and increase penetration. This is found in many Hornady® hunting bullets, but is not used in match or varmint offerings.

7. THE BASE

Hornady® bullets primarily come in two styles: boattail and flat base. A boattail design is used to lower the drag at extended range, while the traditional flat base design is often used for shooting at moderate range.

*Not found on all bullets.





THE ANATOMY OF A HORNADY® CARTRIDGE

Joyce Hornady recognized innovation as the product of a quest for perfection, and a belief that the next big breakthrough was just around the corner. Founded on the principle of making better shooting products, that desire has led to a wave of ingenuity ever since.

We started manufacturing ammunition to give the hunter and non-reloading shooter an extra advantage—handloaded accuracy in a factory-loaded round. We start with Hornady bullets. The same bullets reloaders use for pinpoint accuracy and dependable performance. Every cartridge is loaded with these bullets on our precision presses one after another.



We carefully inspect cartridges before they go into a box. Brass, primers and bullets are carefully screened one last time for flaws, scratches or imperfections. Unless every round is right, we don't sell it.

1. BULLETS

The most important part of a loaded cartridge is the bullet. Used by handloaders around the world, Hornady bullets are legendary because of their dependability and performance.

2. BRASS

Most Hornady ammunition is loaded in Hornady manufactured cases. We carefully manufacture our brass cases for reliable feeding, corrosion resistance, proper hardness and the ability to withstand maximum chamber pressures. We measure for consistently tight wall concentricity and even run our cases through a pressure calibration test to ensure uniform case expansion during firing. Thanks to this kind of manufacturing care, Hornady cases will ensure proper seating of the bullet, both in the case and in the chamber and ultimately yields optimal velocity, repeatable accuracy and numerous reloads.

3. POWDER

The powder in each cartridge is specifically chosen, based on performance, pressure, velocity and accuracy. We use only the highest quality powders on the market. Each new lot of powder we use is double-

checked for consistency. Our continued testing and research guarantees the optimum powder choices for lower extreme spread and standard deviation.

4. PRIMERS

Primers are selected for proven ability to work efficiently. They are carefully matched to each load and chosen for their ability to quickly and consistently ignite the entire powder charge.





AMMO GUIDE

Hornady® offers a range of law enforcement ammunition designed for specific tactical needs, including urban environments, barrier penetration, short-barreled rifles, and long-range precision. The following offerings provide superior performance, reliability, and safety across various mission-critical situations.

TAP URBAN®

The TAP Urban® line is designed for non-barrier engagements in urban environments where reducing the risk of over-penetration is crucial. Utilizing polymer-tipped bullets ensures rapid expansion which provides dramatic wound cavities, massive fragmentation, and prevents over penetration. TAP Urban® is the preferred choice for use in SBRs, carbines, and rifles when the probability for barrier penetration is low.

TAP PATROL®

TAP Patrol® is specifically designed to provide consistent and reliable performance through the FBI protocol when fired through 14.5" – 16" barreled 1:7 – 1:9" twist patrol rifles. The lead-free Heavy Barrier™ bullet features a flat polymer tip, which allows it to provide "barrier blind" performance ensuring consistent penetration depths. The flat tip design ensures the bullet will not plug with material from the barriers and ensures feeding through the wide variety of patrol rifle platforms. TAP Patrol® ammunition is loaded with temperature stable, low flash propellant designed to work when you do.

TAP® BARRIER™

Hornady® originally developed this ammunition to meet the requirement for a high-speed, barrier penetrating bullet that could be used for nuclear power plant security. The design of TAP® Barrier™ allows the projectile to maintain its structural integrity while punching through barriers, yet still initiates expansion in soft tissue. Ideal application for open air and steel door engagements.

TAP® HEAVY BARRIER™

TAP® Heavy Barrier™ turns cover into concealment. Loaded with a TAP® Heavy Barrier™ monolithic copper alloy bullet, it shoots cleaner than pure copper bullets, fouls barrels less and delivers devastating terminal performance – even through the toughest barriers. The Heavy Barrier™ bullet penetrates heavy barriers such as 1-inch laminated glass with exceptional weight retention while still delivering consistent and reliable expansion. TAP® Heavy Barrier™ is ideal for situations where defeating cover is necessary.

TAP SBR®

Hornady TAP SBR® is designed specifically for 10.5"-11.5" short-barreled rifles by using proprietary propellants and a bullet designed with technology from industry leading Critical Duty® FlexLock® bullets. TAP SBR® ammunition provides exceptional performance in suppressed or unsuppressed SBR's. With virtually no flash or residue, TAP SBR® ammunition dramatically reduces sound signature, will not foul or overheat suppressors, delivers uniform velocity and accuracy, and provides controllable rate of fire in automatic platforms. TAP SBR® is the optimum choice for 10.5"-11.5" barreled 5.56 rifles.

TAP® SUBSONIC

TAP® Subsonic ammunition features SUB-X® (Subsonic eXpanding) bullets with patented Flex Tip® technology, specifically designed to expand reliably at subsonic velocities. Loaded with premium, low flash-propellant that is paired with the primer for optimal velocity consistency, TAP® Subsonic ammunition is the preferred choice when terminal performance is a requirement and low sound signature is key.



TAP® ENTRY™

TAP® ENTRY™ featuring the Hornady 12 Gauge is designed to fit a variety of mission applications including entry (limited penetration), breaching, and training. Featuring a ¾ ounce frangible sintered slug, this round produces wound cavities similar to a 308 WIN, yet minimizes the potential for over-penetration. In most cases, a breacher must transition to an alternate weapon before entering a building, TAP® ENTRY™ provides the capability to breach a door and make entry utilizing the same weapon. TAP® ENTRY™ also provides the ability to train on steel silhouettes without concerns for ricochets, since the slug disintegrates upon impact, making this an extremely versatile round.

TAP PRECISION®

Hornady® TAP Precision® rifle loads offer reliable functioning, low muzzle signature and exceptional accuracy – even at extended range. These precision loads provide outstanding terminal performance with a low risk of over-penetration due to their enhanced expansion characteristics. The polymer-tipped variants provide high ballistic coefficients that optimize long-range accuracy and expansion. The TAP Precision® line is particularly well-suited for SWAT precision marksmen who demand accuracy and stopping power in critical situations.

TAP® AR™

Specifically designed for the AR-10 platform and its variants, TAP® AR™ includes the ELD® Match bullet with a resilient, heat-resistant polymer tip that ensures reliable feeding and operation. The tailored propellant enhances efficiency in the AR-10, while the Heat Shield® tip improves ballistic performance. This results in higher impact velocities, reduced drop and wind drift, and increased energy on target.

HANDGUN & RIFLE TRAINING

TAP® Training™ ammunition compliments the current TAP® duty rounds by delivering comparable, yet economical ammunition for law enforcement training. Utilizing efficient production processes and quality brass or steel cases, Hornady® Training™ ammunition delivers reliable functioning, accuracy, and point of aim / point of impact consistency when compared to comparable duty rounds.

OTM & OTM-A®

Hornady OTM-A® bullets feature the most popular OTM bullet profiles and weights from across the industry. The consistently concentric AMP® (Advanced Manufacturing Process) bullet jackets feature virtually zero runout and near zero variation in wall thickness, making the OTM-A® bullets exceptionally accurate. The OTM-A® bullet profiles were modeled after popular OTM style bullets already being fielded by tactical marksmen, and require no change to ballistic solver information.

TAP SHOTGUN

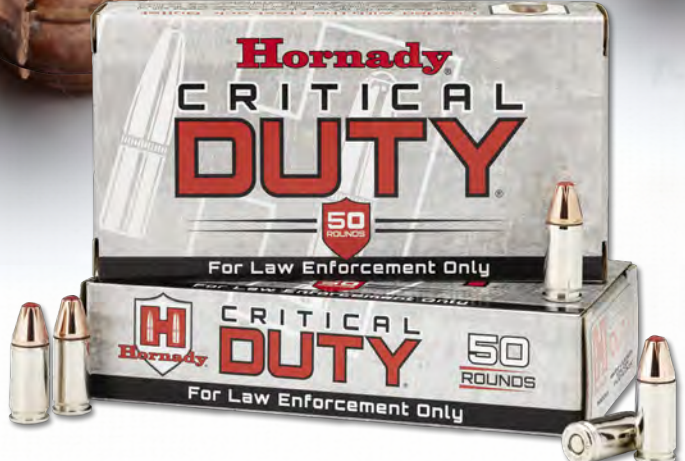
TAP® Shotgun ammunition provides law enforcement with a complete lineup of mission-ready 12 gauge solutions. Designed for reliability, consistency, and tighter patterns. Without requiring shotgun modification, these loads deliver performance trusted in critical situations.

CRITICAL DUTY

Critical Duty® ammunition, built on Hornady's proven Flex Tip® technology, features the rugged FlexLock® bullet designed for consistent, barrier-blind performance through FBI test barriers like plywood, sheet metal, and auto glass. Its patented design prevents clogging and ensures reliable expansion. Engineered for real-world conditions, it includes nickel-plated cases for durability and visibility, waterproofing for moisture protection, and low-flash propellant to preserve night vision. Backed by extensive research, Critical Duty® delivers dependable tactical performance when it matters most.



CRITICAL DUTY®



U.S. Patent Nos. 8,161,885; 8,413,587; 9,121,677

BARRIER BLIND PERFORMANCE

Building on the success of Flex Tip® technology in Hornady® LEVERevolution® and Critical Defense® personal protection ammunition, the rugged FlexLock® bullet and Critical Duty® pistol ammunition is the culmination of a decade of ballistic research and development.

The patented Hornady® Flex Tip® design eliminates clogging and aids bullet expansion. A large mechanical jacket-to-core InterLock® band works to keep the bullet and core from separating for maximum weight retention, excellent expansion and consistent penetration and terminal performance through all FBI test barriers.

The FlexLock® is an "intelligent bullet" that reacts differently depending on the barrier it encounters, delivering "barrier blind" performance after penetrating urban barriers such as plywood, sheet metal and even auto glass.

Bright nickel plated cases eliminate cartridge case tarnish. The highly visible silver nickel simplifies chamber checks in reduced light. Additionally, waterproofing sealant has been applied to the primer pocket and case mouth to prevent moisture intrusion. All Critical Duty® ammunition is loaded with low flash propellant to help preserve night vision in low-light firing.

For the ultimate in tactical terminal ballistic performance through all FBI established urban barriers, choose Critical Duty® ammunition.

Hornady currently has an Indefinite Delivery/Indefinite Quantity (IDIQ) contract with the FBI to provide Critical Duty®, Training, and Frangible ammunition.



SCAN TO
LEARN MORE



FBI TESTED & SELECTED

The FBI completed an extensive evaluation process and selected Hornady® Critical Duty® as its source for 9mm +P and 40 S&W pistol ammunition.

Critical Duty® handgun ammunition is built to meet the needs and requirements of law enforcement and tactical professionals by delivering superior barrier penetration and subsequent terminal performance defined by the FBI Protocol.

1. FLEXLOCK® BULLET

Incorporates two revolutionary Hornady® features: the patented Flex Tip® that initiates consistent expansion while preventing clogging, and the heavy duty InterLock® band that locks the jacket and core together.

2. CANNELURED BULLET WITH CRIMPED CASE

Cannelured bullet with crimped case reduces bullet setback during feeding.

3. INTERLOCK® BAND

This band works to keep the jacket and core from separating for maximum weight retention and proven terminal performance through all FBI test barriers.

4. BULLET CORE

The bullet core is made of high-antimony lead making it extremely tough, delivering controlled expansion for unparalleled terminal performance consistency through all FBI test barriers. It's also more economical than bonded bullets.

5. NICKEL-PLATED CASES

Nickel-plated cases resist corrosion and greatly enhance low-light chamber checks.

6. SEALED PRIMER AND CASE MOUTH

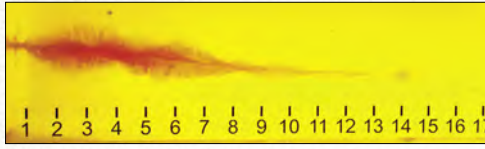
Waterproofing sealant has been applied to the primer pocket and case mouth to prevent moisture intrusion.





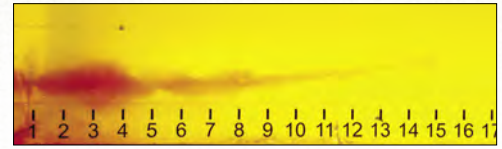
9MM LUGER+P 124 GR. FLEXLOCK® | 3.1" BBL | SIG P365 | NO. 90215

BARE GELATIN



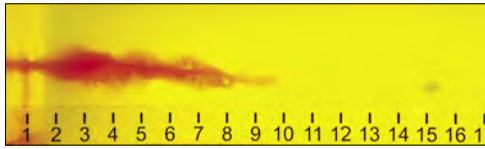
Penetration	Expanded Diameter	Retained Weight	Velocity (FPS)
14.5"	0.54"	100%	1079

WALLBOARD



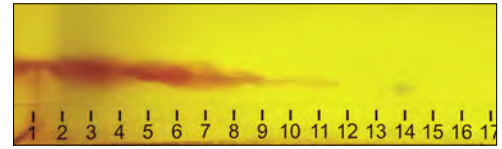
Penetration	Expanded Diameter	Retained Weight	Velocity (FPS)
15.25"	0.55"	100%	1081

HEAVY CLOTHING



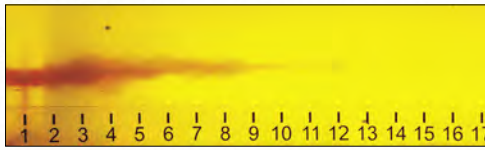
Penetration	Expanded Diameter	Retained Weight	Velocity (FPS)
15.5"	0.51"	100%	1093

PLYWOOD



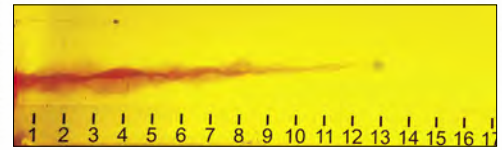
Penetration	Expanded Diameter	Retained Weight	Velocity (FPS)
14.25"	0.53"	100%	1087

STEEL



Penetration	Expanded Diameter	Retained Weight	Velocity (FPS)
12.25"	0.53"	97%	1083

AUTO GLASS



Penetration	Expanded Diameter	Retained Weight	Velocity (FPS)
13.25"	0.41"	72%	1081



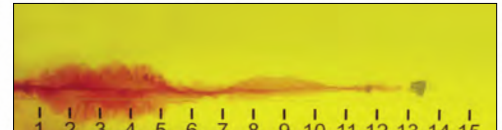
9MM LUGER 135 GR. FLEXLOCK® SUBSONIC | 4.5" BBL | GLOCK 17 | NO. 90235

BARE GELATIN



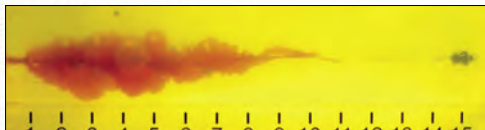
Penetration	Expanded Diameter	Retained Weight	Velocity (FPS)
15.25"	0.56"	100%	1056

WALLBOARD



Penetration	Expanded Diameter	Retained Weight	Velocity (FPS)
13.5"	0.58"	100%	1065

HEAVY CLOTHING



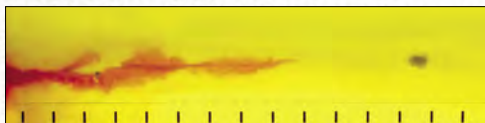
Penetration	Expanded Diameter	Retained Weight	Velocity (FPS)
15.5"	0.50"	100%	1066

PLYWOOD



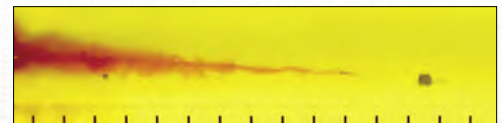
Penetration	Expanded Diameter	Retained Weight	Velocity (FPS)
15.0"	0.51"	100%	1070

STEEL



Penetration	Expanded Diameter	Retained Weight	Velocity (FPS)
13.75"	0.49"	99%	1067

AUTO GLASS



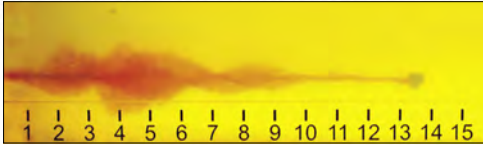
Penetration	Expanded Diameter	Retained Weight	Velocity (FPS)
13.75"	0.41"	67%	1061



Tested and selected by the FBI.

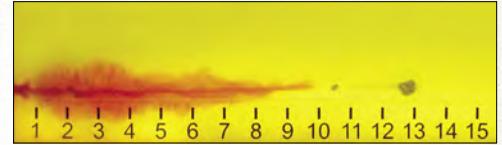
9MM LUGER +P 135 GR. FLEXLOCK® | 4.5" BBL | GLOCK 17 | NO. 90225

BARE GELATIN



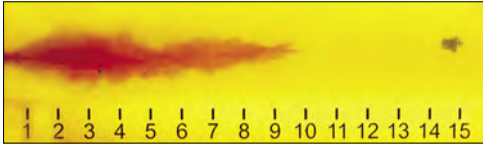
Penetration	Expanded Diameter	Retained Weight	Velocity (FPS)
14.0"	0.60"	100%	1162

WALLBOARD



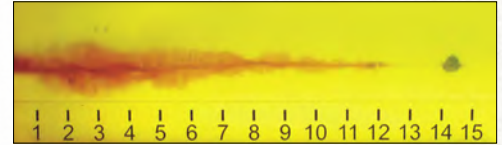
Penetration	Expanded Diameter	Retained Weight	Velocity (FPS)
13.0"	0.62"	100%	1159

HEAVY CLOTHING



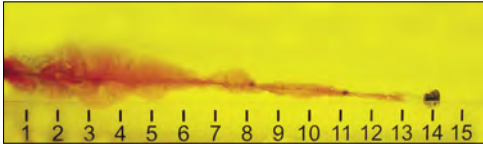
Penetration	Expanded Diameter	Retained Weight	Velocity (FPS)
15.0"	0.55"	100%	1164

PLYWOOD



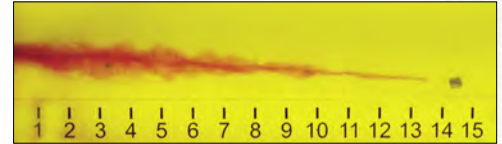
Penetration	Expanded Diameter	Retained Weight	Velocity (FPS)
14.75"	0.57"	100%	1167

STEEL



Penetration	Expanded Diameter	Retained Weight	Velocity (FPS)
14.5"	0.53"	97%	1171

AUTO GLASS

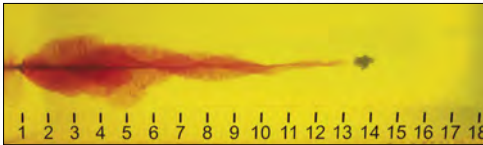


Penetration	Expanded Diameter	Retained Weight	Velocity (FPS)
14.75"	0.42"	69%	1157



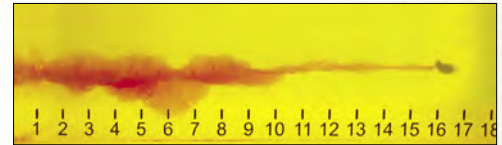
357 SIG 135 GR. FLEXLOCK® | 4.5" BBL | GLOCK 31 | NO. 91295

BARE GELATIN



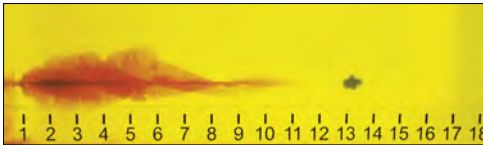
Penetration	Expanded Diameter	Retained Weight	Velocity (FPS)
14.0"	0.58"	99%	1221

WALLBOARD



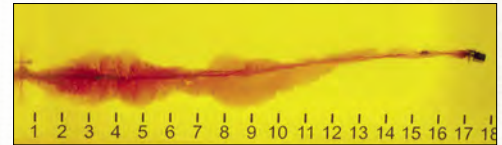
Penetration	Expanded Diameter	Retained Weight	Velocity (FPS)
16.5"	0.42"	100%	1226

HEAVY CLOTHING



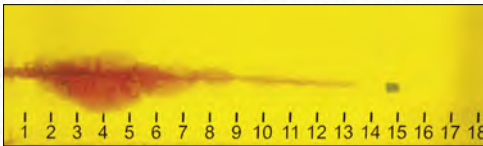
Penetration	Expanded Diameter	Retained Weight	Velocity (FPS)
13.5"	0.56"	99%	1218

PLYWOOD



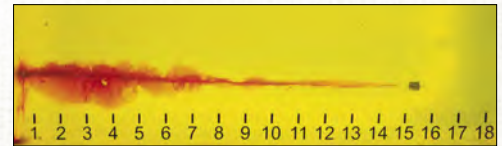
Penetration	Expanded Diameter	Retained Weight	Velocity (FPS)
17.75"	0.53"	100%	1231

STEEL



Penetration	Expanded Diameter	Retained Weight	Velocity (FPS)
15.0"	0.51"	95%	1227

AUTO GLASS



Penetration	Expanded Diameter	Retained Weight	Velocity (FPS)
15.5"	0.49"	77%	1230

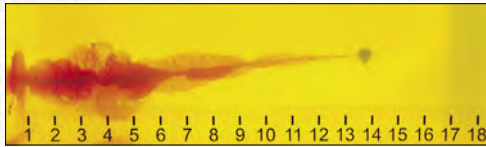


CRITICAL DUTY®



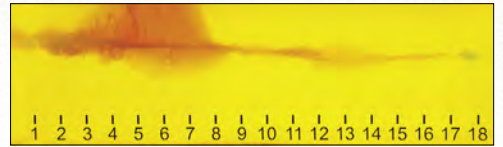
357 MAG 135 GR. FLEXLOCK® | 4.2" BBL | RUGER GP-100 | NO. 90515

BARE GELATIN



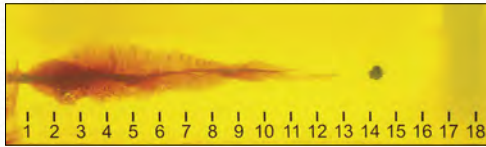
Penetration	Expanded Diameter	Retained Weight	Velocity (FPS)
14.5"	0.58"	99%	1272

WALLBOARD



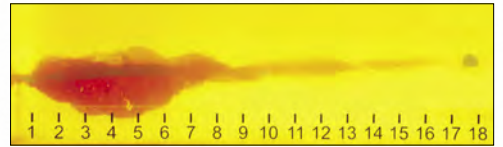
Penetration	Expanded Diameter	Retained Weight	Velocity (FPS)
18.5"	0.44"	100%	1284

HEAVY CLOTHING



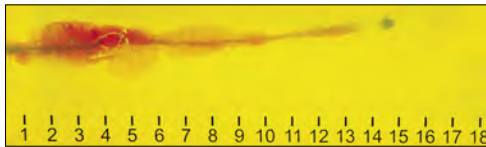
Penetration	Expanded Diameter	Retained Weight	Velocity (FPS)
14.5"	0.57"	99%	1287

PLYWOOD



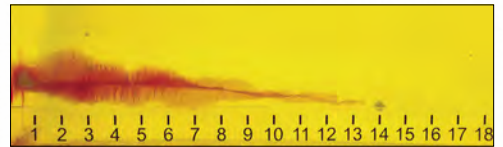
Penetration	Expanded Diameter	Retained Weight	Velocity (FPS)
18.0"	0.54"	95%	1280

STEEL




Penetration	Expanded Diameter	Retained Weight	Velocity (FPS)
14.75"	0.50"	98%	1266

AUTO GLASS



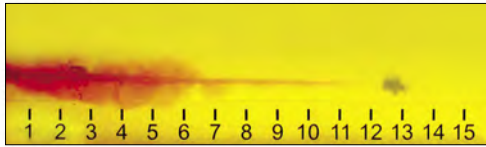
Penetration	Expanded Diameter	Retained Weight	Velocity (FPS)
14.0"	0.46"	73%	1276



 Tested and selected by the FBI.

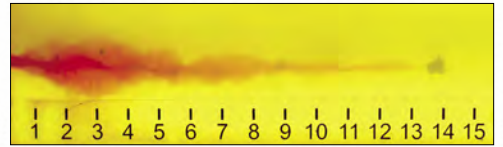
40 S&W 175 GR. FLEXLOCK® | 4.5" BBL | GLOCK 22 | NO. 91375

BARE GELATIN



Penetration	Expanded Diameter	Retained Weight	Velocity (FPS)
13.5"	0.57"	99%	1067

WALLBOARD



Penetration	Expanded Diameter	Retained Weight	Velocity (FPS)
14.0"	0.63"	99%	1059

HEAVY CLOTHING



Penetration	Expanded Diameter	Retained Weight	Velocity (FPS)
14.5"	0.54"	99%	1062

PLYWOOD



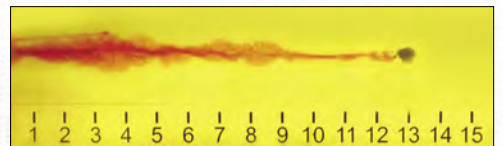
Penetration	Expanded Diameter	Retained Weight	Velocity (FPS)
15.0"	0.52"	99%	1063

STEEL



Penetration	Expanded Diameter	Retained Weight	Velocity (FPS)
13.0"	0.57"	98%	1066

AUTO GLASS

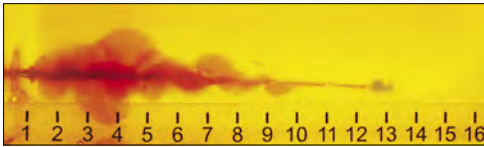


Penetration	Expanded Diameter	Retained Weight	Velocity (FPS)
13.0"	0.61"	79%	1063



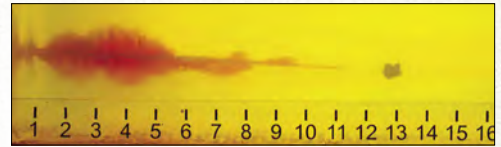
10MM AUTO 175 GR. FLEXLOCK® | 4.6" BBL | GLOCK 20 | NO. 91255

BARE GELATIN



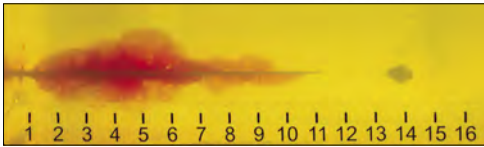
Penetration	Expanded Diameter	Retained Weight	Velocity (FPS)
13.25"	0.66"	99%	1134

WALLBOARD



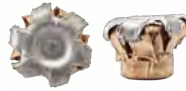
Penetration	Expanded Diameter	Retained Weight	Velocity (FPS)
13.0"	0.67"	96%	1139

HEAVY CLOTHING



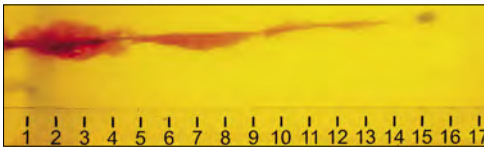
Penetration	Expanded Diameter	Retained Weight	Velocity (FPS)
14.5"	0.63"	99%	1121

PLYWOOD



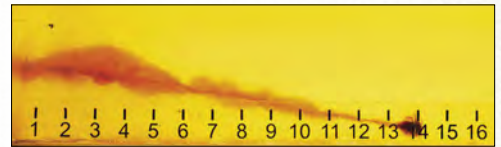
Penetration	Expanded Diameter	Retained Weight	Velocity (FPS)
14.0"	0.68"	97%	1128

STEEL



Penetration	Expanded Diameter	Retained Weight	Velocity (FPS)
15.75"	0.56"	99%	1126

AUTO GLASS



Penetration	Expanded Diameter	Retained Weight	Velocity (FPS)
14.0"	0.55"	80%	1119



45 AUTO+P 220 GR. FLEXLOCK® | 5" BBL | GLOCK 21 | NO. 90925

BARE GELATIN



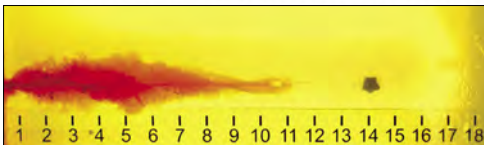
Penetration	Expanded Diameter	Retained Weight	Velocity (FPS)
14.0"	0.71"	99%	969

WALLBOARD



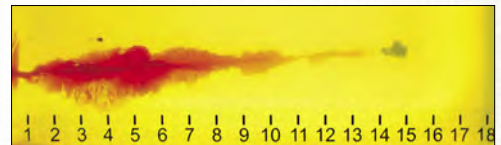
Penetration	Expanded Diameter	Retained Weight	Velocity (FPS)
13.5"	0.70"	99%	979

HEAVY CLOTHING



Penetration	Expanded Diameter	Retained Weight	Velocity (FPS)
14.5"	0.69"	99%	976

PLYWOOD



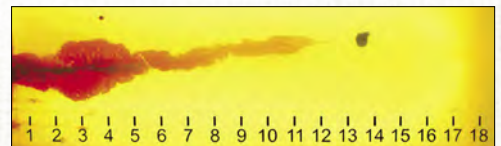
Penetration	Expanded Diameter	Retained Weight	Velocity (FPS)
15.0"	0.66"	99%	978

STEEL



Penetration	Expanded Diameter	Retained Weight	Velocity (FPS)
17.75"	0.54"	99%	973

AUTO GLASS



Penetration	Expanded Diameter	Retained Weight	Velocity (FPS)
13.75"	0.53"	75%	972



223 REM

Hornady® 223 Rem TAP® loads are a unique offering to law enforcement professionals that combine reliable functioning with consistent performance, low muzzle signature, and exceptional accuracy in cannellured and crimped bullets. This ammunition features clean burning propellants and enhanced terminal performance. These highly effective bullets will penetrate soft body armor making them an excellent choice for patrol rifle programs and SWAT teams.



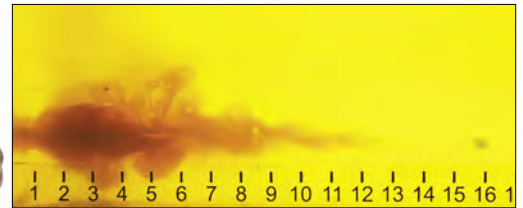
223 REM 53 GR. TAP PATROL®

NO. 80295 | **LEAD FREE**

Application: Entry, Patrol | Meets FBI Protocol*

TAP Patrol® is specifically designed to provide consistent and reliable performance through the FBI protocol when fired with 14.5" to 16" barreled 1:7 to 1:9" twist patrol rifles. The lead free bullet features a flat polymer tip, which allows it to provide "barrier blind" performance ensuring consistent penetration depths. The flat tip design ensures the bullet will not plug with material from the barriers and ensures feeding through the wide variety of patrol rifle platforms. TAP Patrol® ammunition is loaded with temperature stable, low flash propellant designed to work when you do.

BARE GELATIN



Bullet: 53 gr. TAP Patrol®
BC: .170 **SD:** .151
Muzzle Velocity: 3010 fps
Barrel: 16"
Firearm: Colt 6920
Twist Rate: 1:7"

Total Penetration: 16"
Max. Cavity: 5"
Depth to Max. Cav.: 3"
Entry: 0.5"
Retained Weight: 52.0 gr.

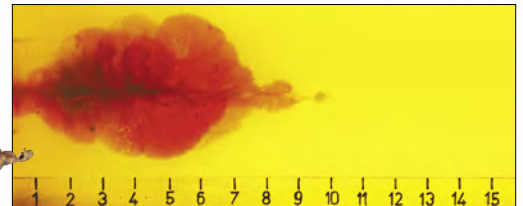
223 REM 55 GR. TAP URBAN®

NO. 83276

Application: Entry

The Hornady® 223 Rem 55 gr. TAP Urban® is the preferred choice for use in SBRs, carbines, and rifles when the probability for barrier penetration is low. Rapid expansion provides dramatic wound cavities, massive fragmentation, and prevents over penetration on non-barrier engagements. These factors make this bullet a great choice when collateral risk is high.

BARE GELATIN



Bullet: 55 gr. TAP Urban®
BC: .255 **SD:** .157
Muzzle Velocity: 2981 fps
Barrel: 16"
Firearm: DPMS
Twist Rate: 1:9"

Total Penetration: 10"
Max. Cavity: 4.5"
Depth to Max. Cav.: 5"
Entry: 0.5"
Retained Weight: 24.1 gr.

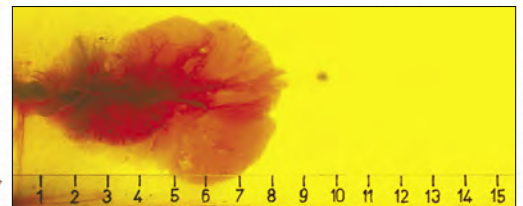
223 REM 60 GR. TAP URBAN®

NO. 83286

Application: Entry

The Hornady® 223 Rem 60 gr. TAP Urban® offers high velocity and performance similar to that of other polymer tipped Hornady® 223 bullets. The 60 gr. bullet offers similar retained weight and penetration to the 55 gr. TAP Urban®, and is the heaviest polymer tipped bullet acceptable for 1:12" twist weapons. The heavier 60 gr. bullet transfers more energy to the target for enhanced terminal performance.

BARE GELATIN



Bullet: 60 gr. TAP Urban®
BC: .265 **SD:** .171
Muzzle Velocity: 2892 fps
Barrel: 16"
Firearm: DPMS
Twist Rate: 1:9"

Total Penetration: 9.75"
Max. Cavity: 5.25"
Depth to Max. Cav.: 6.25"
Entry: 0"
Retained Weight: 20.2 gr.

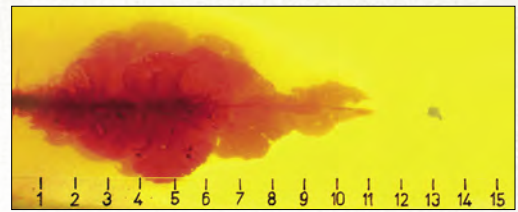
223 REM 62 GR. TAP® BARRIER™

NO. 83285

Application: Patrol

TAP® Barrier™ turns cover into concealment. Hornady® originally developed this ammunition to meet the requirement for a high-speed, barrier penetrating bullet that could be used for nuclear power plant security. The design of the TAP® Barrier™ round allows the projectile to maintain its structural integrity while punching through barriers, yet still initiates expansion in soft tissue. Ideal application for open air and steel door engagements.

BARE GELATIN



Bullet: 62 gr. TAP® Barrier™
BC: .264 **SD:** .176
Muzzle Velocity: 2840 fps
Barrel: 16"
Firearm: DPMS
Twist Rate: 1:9"

Total Penetration: 13.75"
Max. Cavity: 4.5"
Depth to Max. Cav.: 4.75"
Entry: 0.25"
Retained Weight: 43.6 gr.

NEW

223 REM 73 GR. TAP PRECISION®

NO. 83255

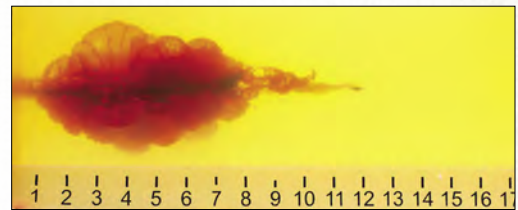
Application: Precision

Hornady® TAP Precision® rifle loads offer reliable functioning, low muzzle signature and exceptional accuracy – even at extended range. These precision loads provide outstanding terminal performance with a low risk of over-penetration due to their enhanced expansion characteristics. The polymer-tipped variants provide high ballistic coefficients that optimize long-range accuracy and expansion. The TAP Precision® line is particularly well-suited for SWAT precision marksmen who demand accuracy in critical situations.

BARE GELATIN



This bullet is designed to fragment entirely.



Bullet: 73 gr. TAP Precision®
BC: .398 **SD:** .208
Muzzle Velocity: 2588 fps
Barrel: 16"
Firearm: DPMS
Twist Rate: 1:7"

Total Penetration: 12"
Max. Cavity: 4.5"
Depth to Max. Cav.: 3.5"
Entry: 0.5"
Retained Weight: 26.3 gr.

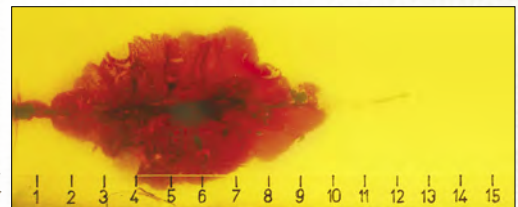
223 REM 75 GR. TAP PRECISION®

NO. 80265

Application: Precision

This match accurate load is our heavy TAP® offering in 223 Rem. This load is suitable for a short barreled rifle that has either a 223 Rem or 5.56 NATO chamber. The 75 gr. bullet offers deeper penetration than the 55 gr. and 60 gr. TAP Urban® bullets. The 75 gr. BTHP penetrates with minimal deflection and provides rapid fragmentation, thus delivering more energy to the target. This bullet generates very large and consistent wound cavities, serving as an ideal choice for 223 Rem precision rifle applications.

BARE GELATIN



Bullet: 75 gr. TAP Precision®
BC: .395 **SD:** .214
Muzzle Velocity: 2542 fps
Barrel: 16"
Firearm: DPMS
Twist Rate: 1:7"

Total Penetration: 12.5"
Max. Cavity: 5.25"
Depth to Max. Cav.: 5"
Entry: 1"
Retained Weight: 27.0 gr.



5.56 NATO

Many rifles chambered in 5.56 NATO are not realizing their full potential because departments are shooting 223 Rem ammo. Your 5.56 NATO chambered rifle was designed to take advantage of the higher pressure of the 5.56 NATO cartridge — higher pressure translates to increased velocity, higher energy and harder-hitting performance.



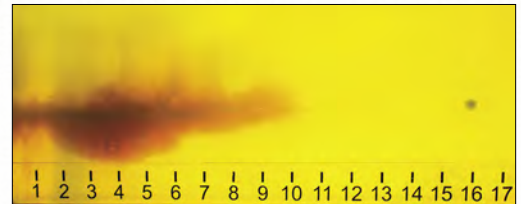
5.56 NATO 53 GR. TAP PATROL®

NO. 81275 | **LEAD FREE**

Application: Entry, Patrol | Meets FBI Protocol*

TAP Patrol® is specifically designed to provide consistent and reliable performance through the FBI protocol when fired through 14.5" – 16" barreled 1:7 – 1:9" twist patrol rifles. The lead free bullet features a flat polymer tip, which allows it to provide "barrier blind" performance ensuring consistent penetration depths. The flat tip design ensures the bullet will not plug with material from the barriers and ensures feeding through the wide variety of patrol rifle platforms. TAP Patrol® ammunition is loaded with temperature stable, low flash propellant designed to work when you do.

BARE GELATIN



Bullet: 53 gr. TAP Patrol®
BC: .170 **SD:** .151
Muzzle Velocity: 3169 fps
Barrel: 16"
Firearm: Colt 6920
Twist Rate: 1:7"

Total Penetration: 16"
Max. Cavity: 4"
Depth to Max. Cav.: 4"
Entry: 0.50"
Retained Weight: 51.2 gr.

NEW 5.56 NATO 60 GR. TAP SBR® | 11.5" BBL | COLT M4 | NO. 81305 | **LEAD FREE**

Application: Entry, Patrol | Meets FBI Protocol*

TAP SBR® ammunition is designed specifically for the 10.5-12.5" short-barreled rifles. By utilizing proprietary propellants and specially designed bullet technology, TAP SBR® provides exceptional performance in suppressed or unsuppressed SBR's. The specialized propellants used provide virtually no flash or residue, and dramatically reduces sound signature, while delivering uniform velocity and accuracy. The monolithic bullet offers exceptional penetration and terminal performance at the reduced, short-barreled velocities. TAP SBR® is the optimum choice for 10.5"-12.5" barreled 5.56 rifles.

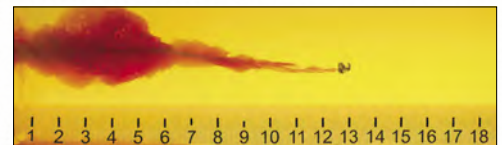


BARE GELATIN



Penetration	Expanded Diameter	Retained Weight	Velocity (FPS)
15.5"	0.47"	100%	2543

WALLBOARD



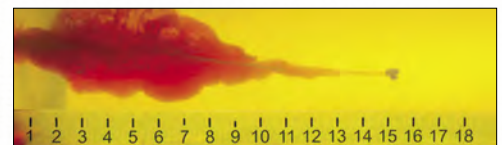
Penetration	Expanded Diameter	Retained Weight	Velocity (FPS)
13.5"	0.51"	100%	2564

HEAVY CLOTHING



Penetration	Expanded Diameter	Retained Weight	Velocity (FPS)
15.5"	0.47"	100%	2601

PLYWOOD



Penetration	Expanded Diameter	Retained Weight	Velocity (FPS)
15.5"	0.51"	100%	2550

STEEL



Penetration	Expanded Diameter	Retained Weight	Velocity (FPS)
16.0"	0.28"	70%	2573

AUTO GLASS



Penetration	Expanded Diameter	Retained Weight	Velocity (FPS)
15.0"	0.29"	61%	2664

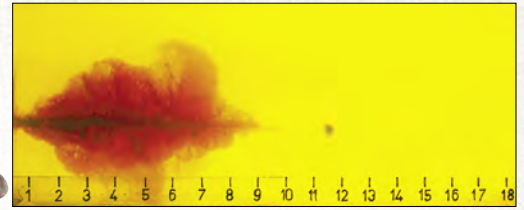
5.56 NATO 62 GR. TAP® BARRIER™

NO. 8125C (50 CT)

Application: Patrol

The design of TAP® Barrier™ allows the projectile to maintain its structural integrity while punching through barriers, yet still initiates expansion in soft tissue. Ideal application for open air and steel door engagements.

BARE GELATIN



Bullet: 62 gr. TAP® Barrier™
BC: .264 **SD:** .176
Muzzle Velocity: 2910 fps
Barrel: 16"
Firearm: DPMS
Twist Rate: 1:9"

Total Penetration: 11.75"
Max. Cavity: 5.5"
Depth to Max. Cav.: 4.75"
Entry: 0.75"
Retained Weight: 45.1 gr.

5.56 NATO 70 GR. TAP® BARRIER™

LEAD FREE PROJECTILE

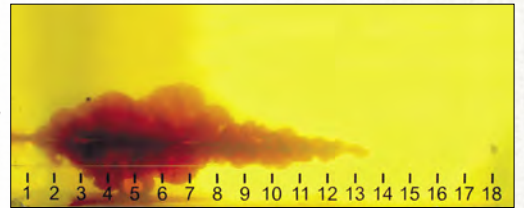
NO. 81265

Application: Patrol | Meets FBI Protocol*

The monolithic solid bullet is constructed entirely from a premium copper alloy that delivers high weight retention and deep penetration.

(For use in 1:7" twist SBRs, carbines and rifles or 1:8" twist carbines and rifles.)

BARE GELATIN



Bullet: 70 gr. TAP® Barrier™
BC: .350 **SD:** .199
Muzzle Velocity: 2652 fps
Barrel: 16"
Firearm: Colt M4
Twist Rate: 1:7"

Total Penetration: 18"
Max. Cavity: 4.0"
Depth to Max. Cav.: 4.5"
Entry: 0.5"
Retained Weight: 67.6 gr.

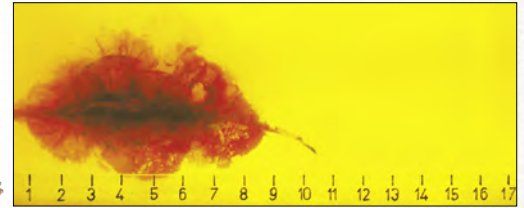
5.56 NATO 75 GR. BTHP T2 TAP®

NO. 8126N

Application: Precision

The T2 bullet profile is specifically designed to optimize function and feeding in M16/M4 variant guns. The cartridge's propellant technology is custom designed to enhance weapon operation, and delivers phenomenal temperature stability. The 75 gr. BTHP T2 bullet is designed to deliver rapid incapacitation upon impact.

BARE GELATIN



Bullet: 75 gr. BTHP T2 TAP®
BC: .355 **SD:** .214
Muzzle Velocity: 2747 fps
Barrel: 16"
Firearm: DPMS
Twist Rate: 1:9"

Total Penetration: 10.5"
Max. Cavity: 5.5"
Depth to Max. Cav.: 5.5"
Entry: 0.75"
Retained Weight: 31.5 gr.

5.56 NATO 75 GR. TAP SBR®

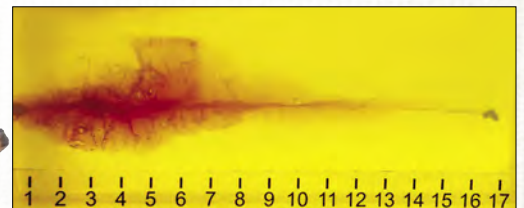
NO. 81295

Application: Entry, Patrol | Meets FBI Protocol*

TAP SBR® ammunition provides exceptional performance in suppressed or unsuppressed SBRs. With virtually no flash or residue, TAP SBR® ammunition dramatically reduces sound signature, will not foul or overheat suppressors, delivers uniform velocity and accuracy, and provides controllable rate of fire in automatic platforms.

TAP SBR® is the optimum choice for 10.5"-12.5" barreled 5.56 rifles.

BARE GELATIN



Bullet: 75 gr. TAP SBR®
BC: .230 **SD:** .214
Muzzle Velocity: 2201 fps
Barrel: 10.5"
Firearm: LMT CQB
Twist Rate: 1:7"

Total Penetration: 17.0"
Max. Cavity: 4.5"
Depth to Max. Cav.: 4.5"
Entry: 0.50"
Retained Weight: 69.5 gr.



6MM ARC

Tested, selected and fielded by a specialized group within the U.S. DoD for its multipurpose combat rifle program, the versatile 6mm ARC does much of what larger cartridges can and everything that smaller cartridges can't. Designed to meet the needs of the world's toughest critics, the 6mm ARC utilizes efficient, high-BC bullets to deliver unprecedented performance from the AR-15 platform.



ADVANCED ▶

Achieves results never before delivered from the AR-15 platform with the ultimate blend of system, weight, performance and shootability.

VERSATILE ▶▶

Even beyond the AR-15 platform, the 6mm ARC is just as comfortable in short or micro action bolt guns and suitable for applications from personal defense to match shooting, hunting, and military and law enforcement.

EFFICIENT ▶▶▶

Balanced application of cartridge, chamber and propellant design coupled with bullet selection for optimum all-range performance and barrel life.

EFFECTIVE ▶▶▶▶

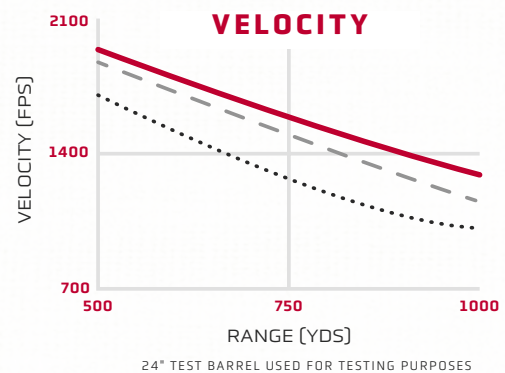
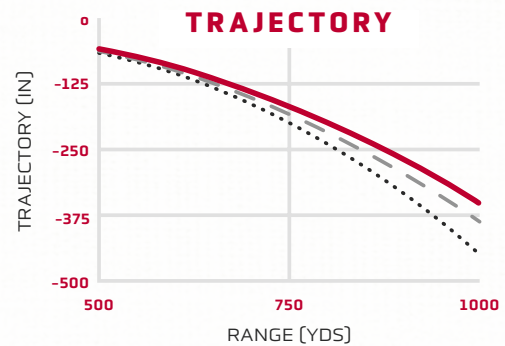
Delivers excellent terminal performance from an assortment of bullets for a variety of applications.

CARTRIDGE COMPARISON

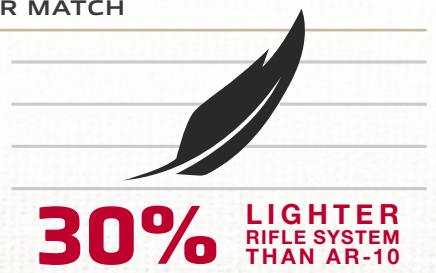
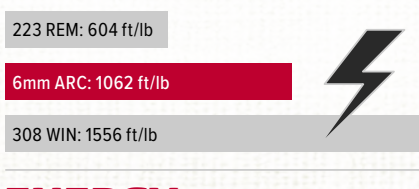
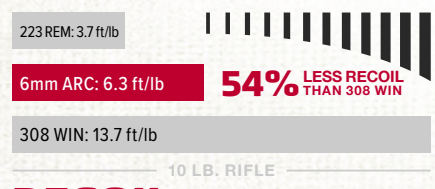
6MM ARC
108 GR MATCH

223 REM
73 GR MATCH

308 WIN
168 GR MATCH



6MM ARC 108 GR MATCH | 223 REM 73 GR MATCH | 308 WIN 168 GR MATCH



RECOIL COMPARISON

ENERGY AT 400 YARDS

30% LIGHTER RIFLE SYSTEM THAN AR-10

THE AR-15 HAS NEVER HAD IT THIS GOOD

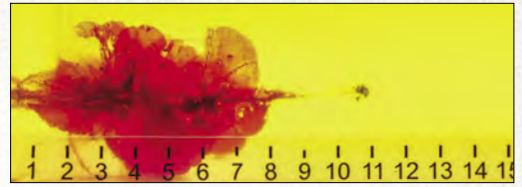
6MM ARC 80 GR. TAP URBAN®

NO. 81615

Application: Entry, Precision

The Hornady® 6mm ARC 80 gr. TAP Urban® is the preferred choice for use in rifles when the probability for barrier penetration is low. Rapid expansion provides dramatic wound cavities, massive fragmentation, and prevents over penetration on non-barrier engagements. These factors make this bullet a great choice when collateral risk is high.

BARE GELATIN



Bullet: 80 gr. TAP Urban®
BC: .410 **SD:** .194
Muzzle Velocity: 2848 fps
Barrel: 16"
Firearm: Geissele GFR
Twist Rate: 1:7.5"

Total Penetration: 11"
Max. Cavity: 4.8"
Depth to Max. Cav.: 4"
Entry: 0.0"
Retained Weight: 39.2 gr.

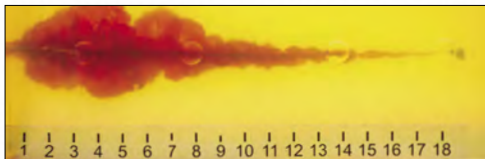
NEW

6MM ARC 90 GR. TAP PATROL® | 18" BBL | GEISSELE GFR | NO. 81635

Application: Entry, Precision, Patrol | Meets FBI Protocol* | **LEAD FREE PROJECTILE**

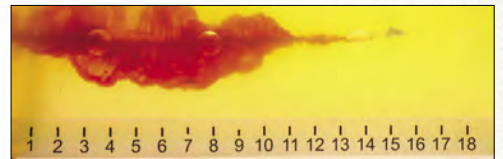
The 6mm ARC 90 gr. TAP Patrol is a reliable, high-performance option for duty rifles chambered in 6mm ARC. Its lead-free, "barrier blind" bullet delivers consistent terminal performance without increasing barrel fouling. The monolithic design ensures exceptional weight retention and deep penetration, while the temperature-stable, low-flash propellant provides dependable performance in any conditions and is ready when you are.

BARE GELATIN



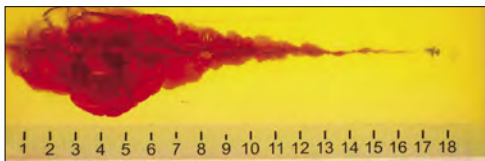
Penetration	Expanded Diameter	Retained Weight	Velocity (FPS)
19.25"	0.54"	98%	2767

WALLBOARD



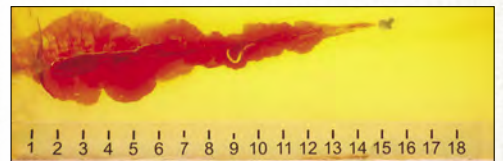
Penetration	Expanded Diameter	Retained Weight	Velocity (FPS)
15.75"	0.58"	97%	2771

HEAVY CLOTHING



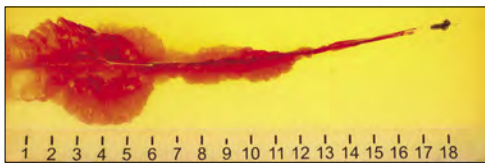
Penetration	Expanded Diameter	Retained Weight	Velocity (FPS)
18.0"	0.54"	98%	2784

PLYWOOD



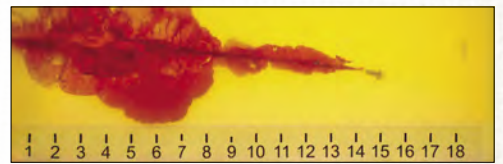
Penetration	Expanded Diameter	Retained Weight	Velocity (FPS)
15.75"	0.63"	93%	2779

STEEL



Penetration	Expanded Diameter	Retained Weight	Velocity (FPS)
18.0"	0.57"	96%	2764

AUTO GLASS



Penetration	Expanded Diameter	Retained Weight	Velocity (FPS)
15.5"	0.41"	82%	2773

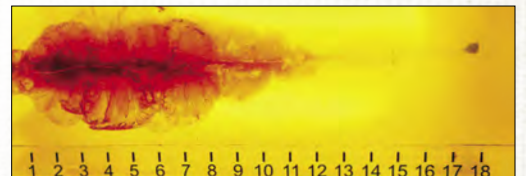
6MM ARC 106 GR. TAP®

NO. 81605

Application: Entry, Precision, Patrol | Meets FBI Protocol*

Tested, selected, and fielded by a specialized group within the U.S. Department of Defense for its multipurpose combat rifle program, the versatile 6mm ARC (Advanced Rifle Cartridge) does what much larger cartridges can and everything that smaller cartridges can't. Designed to meet the needs of the world's toughest critics, the 6mm ARC 106 gr. TAP® utilizes a purpose built, high-BC bullet designed for barrier blind performance.

BARE GELATIN



Bullet: 106 gr. TAP®
BC: .580 **SD:** .256
Muzzle Velocity: 2647 fps
Barrel: 18"
Firearm: Geissele GFR
Twist Rate: 1:7.5"

Total Penetration: 18"
Max. Cavity: 6.0"
Depth to Max. Cav.: 5.5"
Entry: 0.5"
Retained Weight: 76.8 gr.



6.5 CREEDMOOR

Featuring inherently high Ballistic Coefficient (BC) 6.5mm bullets that also deliver high Sectional Density (SD), the 6.5 Creedmoor provides superior external ballistics and shootability with comparable terminal ballistic performance to that of the venerable 308 Winchester. Originally designed by Hornady® as a true match cartridge, the 6.5 Creedmoor is an exceptional choice for all LE/Military applications where the 308 Win had been the only option in the past.



6.5 CREEDMOOR 100 GR. TAP URBAN® NO. 81515

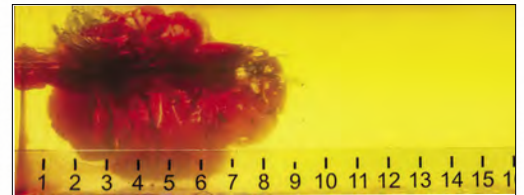
Application: Entry, Precision

The Hornady® 6.5 Creedmoor 100 gr. TAP Urban® is the preferred choice for use in rifles when the probability for barrier penetration is low. Rapid expansion provides dramatic wound cavities, massive fragmentation, and prevents over penetration on non-barrier engagements. These factors make this bullet a great choice when collateral risk is high.

BARE GELATIN



This bullet is designed to fragment entirely.



Bullet: 100 gr. TAP Urban®
BC: .448 **SD:** .205
Muzzle Velocity: 3031 fps
Barrel: 20"
Firearm: LaRue Tactical
Twist Rate: 1:8"

Total Penetration: 9.75"
Max. Cavity: 6.5"
Depth to Max. Cav.: 3.0"
Entry: 0.0"
Retained Weight: 0 gr.

6.5 CREEDMOOR 140 GR. TAP® HEAVY BARRIER™

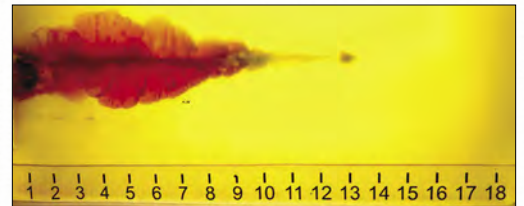
NO. 81485 | **LEAD FREE PROJECTILE**

Application: Heavy Barrier

This load meets the FBI Protocol penetration requirement (12"-18") through heavy barriers (1" laminated glass, 1½" Lexan and 5/8" subway glass) with high weight retention. Featuring different tip geometry than TAP Precision® ammunition, this offering is loaded in a nickel-plated cartridge case making it easy to distinguish heavy barrier ammunition from other ammunition options.

NOTE: Not recommended for use where over-penetration may be a concern.

1" MULTI-LAM HEAVY GLASS



Bullet: 140 gr. TAP® Heavy Barrier™
BC: .350 **SD:** .287
Muzzle Velocity: 2650 fps
Barrel: 26"
Firearm: Remington 700
Twist Rate: 1:8"

Total Penetration: 13.75"
Max. Cavity: 4.0"
Depth to Max. Cav.: 4.5"
Entry: 0.0"
Retained Weight: 67.7 gr

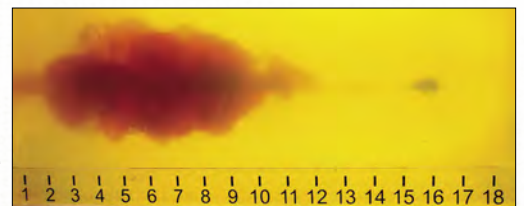
6.5 CREEDMOOR 147 GR. MATCH TAP PRECISION®

NO. 81505

Application: Precision | Meets FBI Protocol*

Hornady® 6.5 Creedmoor TAP Precision® is specifically designed to meet FBI protocol and provide superior external ballistics when compared to standard 308 Win offerings. The 147 gr. Match bullet with Heat Shield® tip delivers excellent terminal performance and results in higher retained velocities, less drop, less wind drift, and more energy on target.

BARE GELATIN



Bullet: 147 gr. Match TAP Precision®
BC: .697 **SD:** .301
Muzzle Velocity: 2646 fps
Barrel: 24"
Firearm: Remington 700
Twist Rate: 1:8"

Total Penetration: 16.0"
Max. Cavity: 5.5"
Depth to Max. Cav.: 2.5"
Entry: 1.0"
Retained Weight: 68.4 gr.



300 BLACKOUT

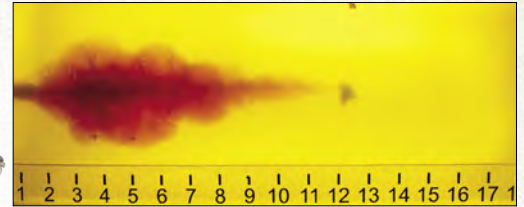
300 BLACKOUT 110 GR. TAP URBAN®

NO. 80885

Application: Entry

The Hornady® 300 Blackout 110 gr. TAP Urban® is the preferred choice for use in SBRs, carbines, and rifles when the probability for barrier penetration is low. Rapid expansion provides dramatic wound cavities, massive fragmentation, and prevents over penetration on non-barrier engagements.

BARE GELATIN



Bullet: 110 gr. TAP Urban®
BC: .290 **SD:** .166
Muzzle Velocity: 2175 fps
Barrel: 8"
Firearm: MC6 PDW
Twist Rate: 1:8"

Total Penetration: 12.75"
Max. Cavity: 4.0"
Depth to Max. Cav.: 3.25"
Entry: 0.5"
Retained Weight: 83.2 gr.

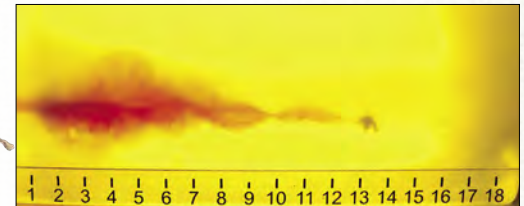
300 BLACKOUT 111 GR. MONOFLEX® TAP SBR®

NO. 80865 | **LEAD FREE**

Application: Entry Patrol/Duty | Meets FBI Protocol*

Specifically designed to meet FBI protocol and maximize performance in rifles and pistols with barrel lengths from 6.75" to 12.5" and twist rates of 1:5" to 1:8". The 111 gr. Monoflex® TAP SBR® features a lead-free monolithic bullet with a large internal cavity and an elongated elastomer tip. This combination allows for expansion at velocities below 1200 FPS, which equates to an expansion distance that is 3 times longer than that of a traditional 5.56 SBR with a 10.5" – 12.5" barrel.

BARE GELATIN



Bullet: 111 gr. Monoflex TAP SBR®
BC: .177 **SD:** .167
Muzzle Velocity: 1893 fps
Barrel: 6.75"
Firearm: SIG MCX
Twist Rate: 1:8"

Total Penetration: 14"
Max. Cavity: 4.0"
Depth to Max. Cav.: 4.25"
Entry: 1"
Retained Weight: 98.7 gr.

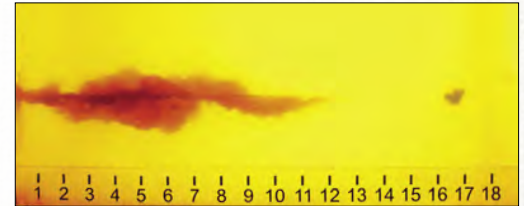
300 BLACKOUT 190 GR. TAP® SUBSONIC

NO. 80895

Application: Entry Patrol/Duty | Meets FBI Protocol*

Featuring the patented 190 gr. Sub-X™ (Subsonic eXpanding) bullet with patented Flex Tip® technology, this round is specifically designed to expand at subsonic velocities and meet FBI protocol for terminal performance. This cartridge is loaded with a powder that is optimized to provide flash suppression, yet function in short barreled or carbine length rifles.

BARE GELATIN



Bullet: 190 gr. Sub-X® TAP®
BC: .437 **SD:** .286
Muzzle Velocity: 998 fps
Barrel: 8"
Firearm: MC6 PDW
Twist Rate: 1:8"

Total Penetration: 17"
Max. Cavity: 3.5"
Depth to Max. Cav.: 5"
Entry: 0.5"
Retained Weight: 174.0 gr.

NEW

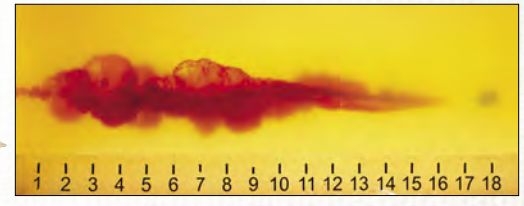
300 BLACKOUT 225 GR. TAP® SUBSONIC

NO. 80855

Application: Entry Patrol/Duty | Meets FBI Protocol*

The Hornady 300 Blackout SUB-X TAP SBR features a 225 gr. SUB-X bullet engineered for enhanced energy and reliable performance. Its patented FlexTip® technology is specifically designed to expand at subsonic velocities while meeting FBI protocol standards. The cartridge is loaded with optimized powder that delivers flash suppression, clean burning, and dependable function in short-barrel and carbine-length rifles.

BARE GELATIN



Bullet: 225 gr. SUB-X® TAP®
BC: .312 **SD:** .339
Muzzle Velocity: 998 fps
Barrel: 10.5"
Firearm: CMMG
Twist Rate: 1:8"

Total Penetration: 18.5"
Max. Cavity: 3.0"
Depth to Max. Cav.: 6.5"
Entry: 1.2"
Retained Weight: 223.1 gr.



308 WIN

Hornady® TAP® Rifle loads offer reliable functioning, low muzzle signature and superior terminal performance. Hornady® urban/precision loads provide a low risk of over-penetration due to their enhanced expansion characteristics. The polymer tipped variants have high ballistic coefficients, making them an excellent choice for SWAT precision marksmen.

308 WIN 110 GR. TAP URBAN®

NO. 80896

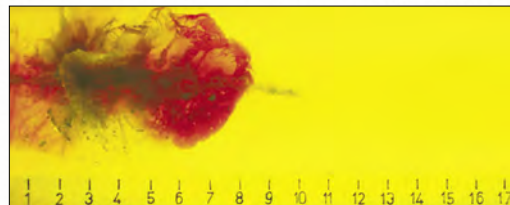
Application: Entry, Precision

The 110 gr. bullet demonstrates similar penetration to the 223 Rem 75 gr. BTHP bullet, but with substantially more temporary and permanent cavity and fragmentation, proving itself an excellent choice for high collateral risk environments.

BARE GELATIN



This bullet is designed to fragment entirely.



Bullet: 110 gr. TAP Urban®
BC: .290 **SD:** .166
Muzzle Velocity: 2998 fps
Barrel: 20"
Firearm: Remington 700
Twist Rate: 1:12"

Total Penetration: 10.0"
Max. Cavity: 6.0"
Depth to Max. Cav.: 4.5"
Entry: 0.0"
Retained Weight: 5.6 gr.

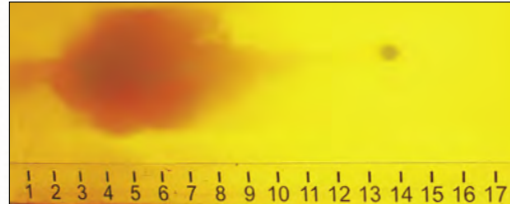
308 WIN 155 GR. TAP PRECISION®

NO. 80905

Application: Entry, Precision | Meets FBI Protocol*

The 155 gr. TAP Precision® bullet with Heat Shield® tip delivers excellent terminal performance and features a resilient, heat resistant polymer tip that improves the ballistic coefficient, resulting in higher impact velocities, less drop, less wind drift, and more energy on target.

BARE GELATIN



Bullet: 155 gr. TAP Precision®
BC: .461 **SD:** .233
Muzzle Velocity: 2856 fps
Barrel: 26"
Firearm: Remington 700
Twist Rate: 1:12"

Total Penetration: 13.75"
Max. Cavity: 6.0"
Depth to Max. Cav.: 3.0"
Entry: 0.5"
Retained Weight: 72.5 gr.

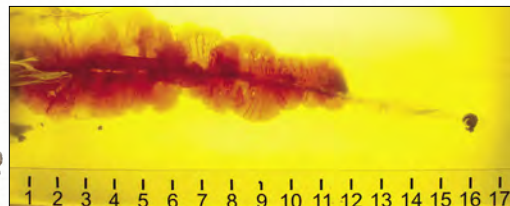
308 WIN 165 GR. TAP® HEAVY BARRIER™

NO. 80985 | **LEAD FREE PROJECTILE**

Application: Heavy Barrier

TAP® Heavy Barrier™ turns cover into concealment. Constructed of a monolithic copper alloy that shoots cleaner than pure copper and fouls less, the 165 gr. bullets are designed to meet FBI Protocol (12" – 18") through heavy barriers such as 1" laminated glass, 1½" Lexan, and 5/8" subway glass with exceptional weight retention while still delivering superior terminal performance.

BARE GELATIN



Bullet: 165 gr. TAP® Heavy Barrier™
BC: .447 **SD:** .248
Muzzle Velocity: 2735 fps
Barrel: 20"
Firearm: Remington 700
Twist Rate: 1:12"

Total Penetration: 16.25"
Max. Cavity: 4.0"
Depth to Max. Cav.: 3.5"
Entry: 0.0"
Retained Weight: 116.5 gr.



Endorsed by the American Sniper Association.
 All 308 Win ballistic gelatin shots were fired from 30 feet.

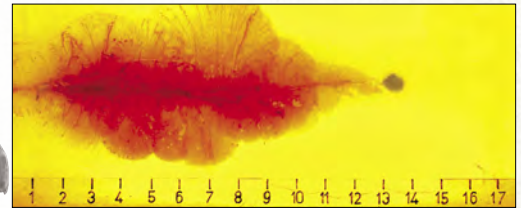
308 WIN 168 GR. TAP PRECISION® A-MAX®
 NO. 80965

Application: Entry, Precision | Meets FBI Protocol*

The 168 gr. TAP Precision® bullet is a match grade bullet with the performance advantages of a polymer tip. Standard barrier performance is exemplary and this load and impressive soft tissue expansion without over penetration.

Meets FBI barrier penetration performance requirements.
Endorsed by the American Sniper Association.

BARE GELATIN



Bullet: 168 gr. Tap Precision®
BC: .475 **SD:** .253
Muzzle Velocity: 2537 fps
Barrel: 20"
Firearm: Remington 700
Twist Rate: 1:12"

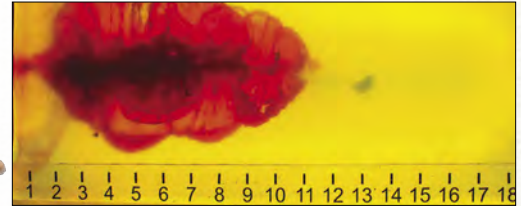
Total Penetration: 14.25"
Max. Cavity: 6.5"
Depth to Max. Cav.: 7.0"
Entry: 0.5"
Retained Weight: 120.8 gr.

308 WIN 168 GR. TAP PRECISION®
 NO. 80725

Application: Entry, Precision | Meets FBI Protocol*

The 168 gr. TAP Precision® bullet with Heat Shield® tip delivers the excellent terminal performance TAP Precision® is known for, but features a resilient, heat resistant polymer tip that improves the ballistic coefficient, resulting in higher impact velocities, less drop, less wind drift, and more energy on target.

BARE GELATIN



Bullet: 168 gr. Tap Precision®
BC: .523 **SD:** .253
Muzzle Velocity: 2718 fps
Barrel: 26"
Firearm: Remington 700
Twist Rate: 1:12"

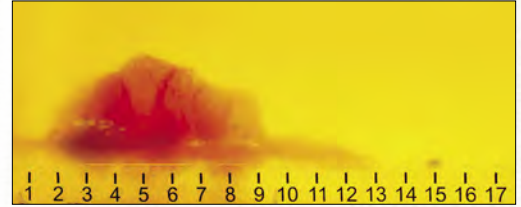
Total Penetration: 13.25"
Max. Cavity: 7.0"
Depth to Max. Cav.: 3.75"
Entry: 0.5"
Retained Weight: 125.2 gr.

308 WIN 168 GR. TAP® AR™
 NO. 80715

Application: Entry, Precision | Meets FBI Protocol*

Designed specifically for the 308 AR-10 platform and its variants, the resilient tip of the TAP® AR™ bullet aids in reliable feed and function, and the propellant is specifically tailored to efficiently operate in the AR-10. The 168 gr. TAP Precision® bullet delivers the excellent terminal performance TAP Precision® is known for, but features a resilient, Heat Shield® tip that improves the ballistic coefficient, resulting in higher impact velocities, less drop, less wind drift, and more energy on target.

BARE GELATIN



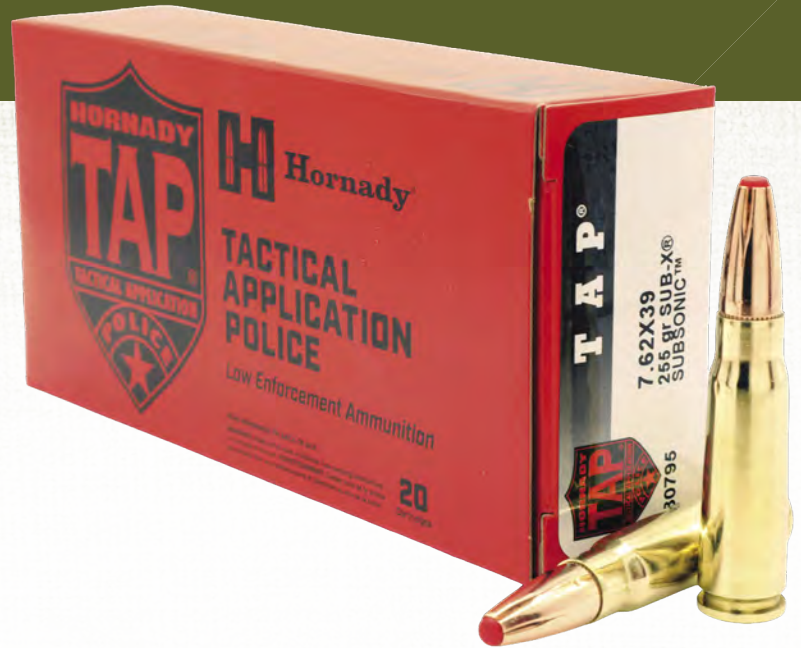
Bullet: 168 gr. TAP® AR™
BC: .523 **SD:** .253
Muzzle Velocity: 2542 fps
Barrel: 16"
Firearm: Tango 8 MSP
Twist Rate: 1:8"

Total Penetration: 15.25"
Max. Cavity: 5.0"
Depth to Max. Cav.: 4.5"
Entry: 0.5"
Retained Weight: 101.4 gr.



7.62x39

Hornady® 7.62x39 is specifically developed for agencies that demand reliable terminal performance of the 7.62x39 over legacy FMJ options. The polymer tip initiates expansion upon contact, allowing consistent expansion and penetration through the FBI protocol, making it the optimum choice for the most demanding Units around the world.



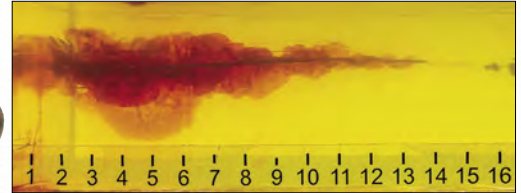
7.62X39 111 GR. TAP SBR®

NO. 80785 | **LEAD FREE PROJECTILE**

Application: Entry, Patrol | Meets FBI Protocol*

The Hornady® 7.62x39 111 gr. TAP SBR® was specifically designed to meet FBI protocol and maximize performance in rifles and pistols with barrel lengths from 9" to 16" and twist rates of 1:9.45" The newly designed 111 gr. TAP SBR® features a lead-free monolithic bullet with a large internal cavity and an elongated elastomer tip. This combination allows for expansion at velocities below 1200 FPS, which equates to an expansion distance that is 3 times longer than that of a traditional 5.56 SBR with a 10.5" – 12.5" barrel.

BARE GELATIN



Bullet: 111 gr. TAP SBR®
BC: .140 **SD:** .152
Muzzle Velocity: 2894 fps
Barrel: 9"
Firearm: CZ Bren
Twist Rate: 1:9.45" or faster

Total Penetration: 17"
Max. Cavity: 3.9"
Depth to Max. Cav.: 4"
Entry: 0.0"
Retained Weight: 108.8 gr.

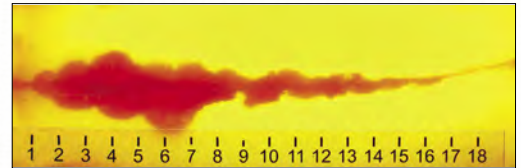
7.62X39 255 GR. TAP® SUBSONIC

NO. 80795

Application: Entry, Patrol

Hornady® 7.62x39mm features a 255 gr. SUB-X (Subsonic eXpanding) bullet with patented Flex Tip® technology, specifically designed to expand at subsonic velocities. This cartridge is loaded with a powder that is optimized to provide flash suppression, clean burning, yet function in short barrel to carbine length rifles.

BARE GELATIN



Bullet: 255 gr. Sub-X™ TAP®
BC: .365 **SD:** .405
Muzzle Velocity: 2894 fps
Barrel: 9"
Firearm: CZ Bren
Twist Rate: 1:9.45" or faster

Total Penetration: 27.5"
Max. Cavity: 2.9"
Depth to Max. Cav.: 6.3"
Entry: 0.75"
Retained Weight: 252.4 gr.



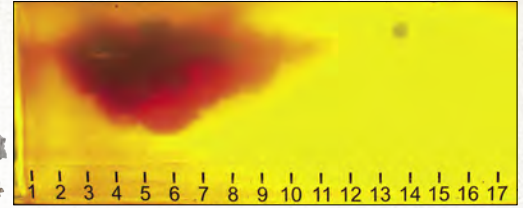
300 WIN MAG & 300 PRC

300 WIN MAG 178 GR. TAP PRECISION® NO. 82045

Application: Precision

Hornady® 300 Win Mag 178 gr. TAP Precision® ammunition was designed as an improvement on the 178 gr. TAP Precision® load by incorporating the Match bullet. Offering higher velocity and energy that law enforcement professionals may require over the standard 308 Win, makes this a great alternative to utilize in a variety of situations. The tip initiates expansion of the Match bullet, ensuring uniform expansion and penetration through a variety of barriers, while mitigating liability due to over-penetration.

BARE GELATIN



Bullet: 178 gr. TAP Precision®
BC: .547 **SD:** .268
Muzzle Velocity: 2894 fps
Barrel: 22"
Firearm: Nemo Arms Omen
Twist Rate: 1:8"

Total Penetration: 14.25"
Max. Cavity: 8.5"
Depth to Max. Cav.: 4.25"
Entry: 0.5"
Retained Weight: 82.8 gr.



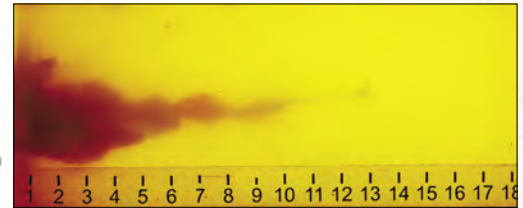
300 PRC

300 PRC 190 GR. HEAVY BARRIER™ NO. 82145 | **LEAD FREE PROJECTILE**

Application: Heavy Barrier

The heat-resistant polymer tip of the Heavy Barrier™ bullet enhances ballistic performance, delivering flat trajectories and superior long-range accuracy. This cartridge offers barrier-blind qualities with match-grade consistency, making it ideal for scenarios requiring accuracy, stopping power and reliability.

1" MULTI-LAM HEAVY GLASS



Bullet: 190 gr. Heavy Barrier™
BC: .575 **SD:** .253
Muzzle Velocity: 3010 fps
Barrel: 28"
Firearm: Barret Mrad
Twist Rate: 1:8"

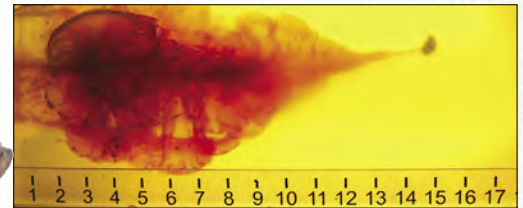
Total Penetration: 13.5"
Max. Cavity: 7.25"
Depth to Max. Cav.: 6.0"
Entry: 0.0"
Retained Weight: 42.1 gr.

300 PRC 225 GR. TAP PRECISION® NO. 81215

Application: Precision

Designed and adopted to fulfill a specific need within the Department of Defense, this cartridge is an efficient, non-belted magnum featuring a 225 grain ELD® Match bullet with a Heat Shield Tip. While utilizing the same bolt face as a 300 Win Mag, the 300 PRC headspaces off the shoulder rather than a belt, providing superior accuracy. Following similar design characteristics present in the 6.5 Creedmoor, the 300 PRC provides higher velocities and the ability to run longer/heavier bullets than the 300 Win Mag, making it a much more versatile cartridge.

BARE GELATIN

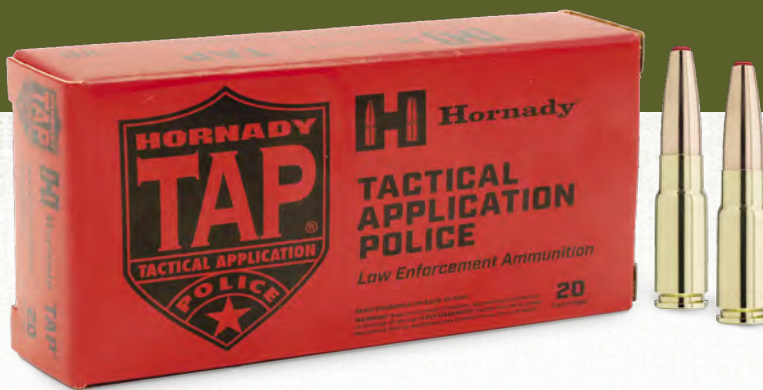


Bullet: 225 gr. TAP Precision®
BC: .777 **SD:** .339
Muzzle Velocity: 2650 fps
Barrel: 26"
Firearm: Barret Mrad
Twist Rate: 1:8"

Total Penetration: 15.0"
Max. Cavity: 8.0"
Depth to Max. Cav.: 4.5"
Entry: 0.0"
Retained Weight: 95.8 gr.



338 ARC



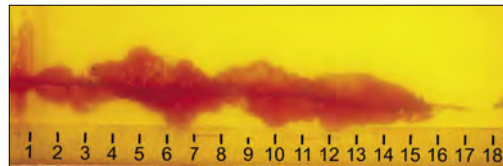
338 ARC 307 GR. TAP® SUBSONIC

NO. 82275

Application: Entry, Patrol

The Hornady 338 ARC was purposefully designed for the ultimate in subsonic performance. Its 307 gr. Sub-X bullet initiates controlled expansion even at subsonic velocities. Optimized for reliable cycling in suppressed and unsuppressed rifles, the 338 ARC offers minimal noise signature and low recoil. Its polymer tip aids in expansion, while the jacket and core design maintain structural integrity through barriers. The 338 ARC SUBSONIC provides over 1.5 times more energy than subsonic 300 Blackout, for increased terminal performance.

BARE GELATIN



Bullet: 307 gr. SUB-X® TAP®
BC: .375 **SD:** .384
Muzzle Velocity: 996 fps
Barrel: 12"
Firearm: Maximum Defense
Twist Rate: 1:8"

Total Penetration: 20"
Max. Cavity: 3"
Depth to Max. Cav.: 6.5"
Entry: 0.5"
Retained Weight: 285.5 gr.





338 LAPUA MAG

The selection of Hornady® TAP® 338 Lapua Magnum ammunition offers exceptional accuracy and outstanding terminal performance. Polymer tipped options provide high ballistic coefficients, flat trajectory and reduced wind deflection. Components are purposefully selected for consistency, uniformity, and temperature stability and loaded using stringent quality control.

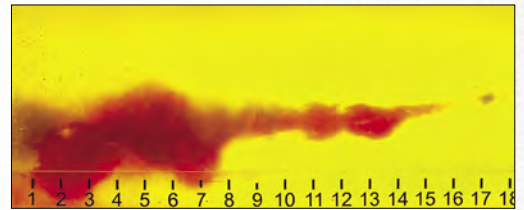


338 LAPUA MAG 240 GR. HEAVY BARRIER™ NO. 82315 | LEAD FREE PROJECTILE

Application: Heavy Barrier

The advanced 240-grain Heavy Barrier™ bullet ensures controlled expansion, deep penetration, and weight retention—perfect for long-range engagements. This cartridge is a reliable, hard-hitting choice for tactical scenarios demanding precision, power and barrier penetration.

1" MULTI-LAM HEAVY GLASS



Bullet: 240 gr. Heavy Barrier™
BC: .611 **SD:** .300
Muzzle Velocity: 2920 fps
Barrel: 24"
Firearm: Barret Mrad
Twist Rate: 1:9"

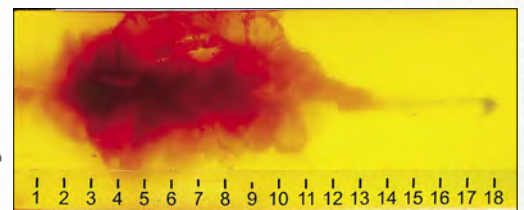
Total Penetration: 20.5"
Max. Cavity: 4.75"
Depth to Max. Cav.: 3.25"
Entry: 0.0"
Retained Weight: 125.3 gr.

338 LAPUA MAG 285 GR. TAP PRECISION® NO. 8235

Application: Precision

The 285 gr. ELD® Match bullet with Heat Shield® tip delivers the excellent terminal performance TAP Precision® is known for, but features a resilient, heat-resistant polymer tip that improves the ballistic coefficient, resulting in higher impact velocities, less drop, less wind drift, and more energy on target. This load meets the FBI protocol penetration requirement through standard barriers.

BARE GELATIN



Bullet: 285 gr. TAP Precision®
BC: .829 **SD:** .356
Muzzle Velocity: 2789 fps
Barrel: 24"
Firearm: Barret Mrad
Twist Rate: 1:9"

Total Penetration: 18.5"
Max. Cavity: 8.0"+
Depth to Max. Cav.: 4"
Entry: 1"
Retained Weight: 114.0 gr.



50 BMG

50 BMG 750 GR. TAP PRECISION® NO. 8275

The Hornady 50 BMG 750 gr TAP Precision® is engineered to deliver precision and power, making it one of the most advanced bullets in the industry.

The TAP Precision® design features an aerodynamic secant ogive profile and near-perfect concentricity. These qualities result in a high ballistic coefficient, enhancing its stability and flight accuracy over extreme distances.

As a .50 caliber Match™ cartridge, the 750 gr TAP Precision® generates a muzzle energy exceeding 13,000 ft-lb, packing immense destructive power with a high degree of accuracy and consistency. Ideal for long-range shooting, this cartridge stands out for its ability to deliver reliable, pinpoint accuracy while maintaining the force necessary for effective target engagement at maximum ranges.

BC: 1.050 **SD:** .412



MIL-SPEC PACKAGING

Hornady is committed to supporting government and law enforcement agencies with customized packaging solutions, including ammo cans, crates, and mil-spec options. We will work closely with you to meet specific needs and ensure durable, compliant, and reliable packaging for mission-critical resources. Contact us to discuss your requirements.





OTM & OTM-A®

Hornady OTM-A® bullets feature the most popular OTM bullet profiles and weights from across the industry. The consistently concentric AMP® (Advanced Manufacturing Process) bullet jackets feature virtually zero runout and near zero variation in wall thickness, making the OTM-A® bullets exceptionally accurate. The OTM-A® bullet profiles were modeled after popular OTM style bullets already being fielded by tactical marksmen, and require no change to ballistic solver information.

NEW 6MM ARC 105 GR. OTM-A®



NO. 81613
BC: .536 SD: .254

16" Test Barrel	Muzzle	100 yd	200 yd	300 yd	400 yd	500 yd
Velocity (fps)	2610	2445	2286	2132	1985	1844
Energy (ft lbs)	188	1393	1218	1060	919	793
Trajectory (inches)	-1.5	0.0	-4.3	-15.3	-33.9	-61.4

300 BLACKOUT 220 GR. OTM-A® SUBSONIC



NO. 80859
BC: .625 SD: .331

16" Test Barrel	Muzzle	100 yd	200 yd	300 yd	400 yd	500 yd
Velocity (fps)	1050	1009	975	945	918	893
Energy (ft lbs)	539	498	464	436	411	390
Trajectory (inches)	-1.5	0.0	-32.6	-101.8	-209.9	-359.5

6.5 CREEDMOOR 140 GR. OTM-A®



NO. 81480
BC: .608 SD: .287

24" Test Barrel	Muzzle	100 yd	200 yd	300 yd	400 yd	500 yd
Velocity (fps)	2700	2553	2412	2274	2141	2013
Energy (ft lbs)	2266	2027	1808	1608	1425	1259
Trajectory (inches)	-1.5	0	-3.8	-13.7	-30.2	-54.4

338 LAPUA MAG 250 GR. OTM



NO. 82305
BC: .670 SD: .313

24" Test Barrel	Muzzle	100 yd	200 yd	300 yd	400 yd	500 yd
Velocity (fps)	2850	2712	2579	2449	2323	2201
Energy (ft lbs)	4509	4083	3691	3330	2996	2689
Trajectory (inches)	-1.5	0	-3.2	-11.7	-26.0	-46.7

7.62X51 175 GR. OTM-A® SEALED



NO. 80988
BC: .485 SD: .264

24" Test Barrel	Muzzle	100 yd	200 yd	300 yd	400 yd	500 yd
Velocity (fps)	2580*	2402	2231	2066	1910	1761
Energy (ft lbs)	2586	2241	1933	1659	1417	1204
Trajectory (inches)	-1.5	2.3	0	-9.3	-26.7	-53.7

338 LAPUA MAG 300 GR. OTM-A®



NO. 82319
BC: .716 SD: .375

24" Test Barrel	Muzzle	100 yd	200 yd	300 yd	400 yd	500 yd
Velocity (fps)	2625	2502	2383	2267	2154	2044
Energy (ft lbs)	4590	4170	3782	3423	3090	2783
Trajectory (inches)	-1.5	0	-4.1	-14.2	-31.2	-55.7

*Velocity measured at 78 feet.



HANDGUN TRAINING™

Hornady bullets are engineered to meet the demanding standards of law enforcement, ensuring your equipment performs with precision and reliability. Below are the various bullet types and their specific applications in law enforcement operations.

FULL METAL JACKET (FMJ)

Hornady Full Metal Jacket (FMJ) bullets are projectiles designed for consistent performance in training and competitive shooting scenarios. FMJ bullets feature a lead core encased in a uniform copper jacket; these bullets ensure reliable feeding, reduced barrel fouling, and exceptional accuracy. FMJ bullets are used for high-volume shooting, offering shooters reliability and consistency. Hornady FMJ bullets are available with the same weight and profiles as our Critical DUTY® counterparts.



9MM LUGER 135 GR. FMJ
BRASS CASE | NO. 90238

40 S&W 175 GR. FMJ
BRASS CASE | NO. 91374

357 SIG 135 GR. FMJ
BRASS CASE | NO. 91298

45 AUTO 220 GR. FMJ
BRASS CASE | NO. 90924

CRIMPLOCK® ENCAPSULATED

Hornady Crimplock® Encapsulated bullets are designed with a fully enclosed core, where the lead is entirely encased in a copper jacket to eliminate lead exposure and reduce fouling. This construction makes them preferred for indoor ranges or environments where minimizing airborne lead is crucial. Crimplock® Encapsulated bullets maintain precision and consistency, delivering excellent accuracy and reliable performance in various firearms. Crimplock® Encapsulated bullets provide FMJ performance while balancing airborne lead and environmental considerations.

NEW 9MM LUGER 124 GR. CRIMPLOCK® ENCAPSULATED
BRASS CASE | NO. 90257 | **REDUCED LEAD**

9MM LUGER 135 GR. CRIMPLOCK® ENCAPSULATED
BRASS CASE | NO. 90222 | **REDUCED LEAD**

FRANGIBLE **LEAD FREE**

Hornady Frangible bullets are specifically designed for applications where reducing ricochet risk is critical. Made from a compressed powdered metal core encased in a copper jacket, these bullets disintegrate into small particles upon impact with hard surfaces, ensuring safer use in confined spaces. Despite their frangibility, they maintain accuracy and reliable feeding in semi-automatic firearms. These bullets are ideal for close-quarters and indoor training, balancing safety, performance, and precision.

9MM LUGER 90 GR. FRANGIBLE
BRASS CASE | NO. 90230

357 SIG 90 GR FRANGIBLE
BRASS CASE | NO. 91285

40 S&W 125 GR. FRANGIBLE
BRASS CASE | NO. 91319

45 AUTO 145 GR. FRANGIBLE
BRASS CASE | NO. 90931



223 REM

Hornady® ammunition provides a cost effective firearms alternative to the standard TAP® and Critical Duty® loads. Loaded with proven propellants, coupled with high quality bullets, cases, and primers, Hornady® ammunition is designed to deliver point of aim / point of impact comparable to our TAP® and Critical Duty® offerings. Hornady® Ammunition - an economical, high quality solution for Law Enforcement.

223 REM 55 GR. SP

BRASS CASE | NO. 80255

223 REM 55 GR. FMJ-BT

BRASS CASE | NO. 80275

223 REM 55 GR. FMJ

BRASS CASE | NO. 80271 (50 CT) | NO. 80277 (250 CT)

5.56 NATO

Hornady® ammunition provides a cost effective firearms alternative to the standard TAP® and Critical Duty® loads. Loaded with proven propellants, coupled with high quality bullets, cases, and primers, Hornady® ammunition is designed to deliver point of aim / point of impact comparable to our TAP® and Critical Duty® offerings. Hornady® Ammunition - an economical, high quality solution for law enforcement and military applications.

5.56 NATO 45 GR. FRANGIBLE

BRASS CASE | NO. 81251 | **LEAD FREE**

NEW 5.56 NATO 50 GR. JACKETED FRANGIBLE

BRASS CASE | NO. 81302 | **LEAD FREE** | **SUPPRESSOR SAFE**

5.56 NATO 55 GR. FMJ

BRASS CASE | NO. 81278 (50 CT) | NO. 81277 (250 CT)

NEW 5.56 NATO 60 GR. JACKETED FRANGIBLE

BRASS CASE | NO. 81259 | **LEAD FREE** | **SUPPRESSOR SAFE**

NEW 5.56 NATO 60 GR. NON-EXPANDING

BRASS CASE | NO. 81304 | **LEAD FREE**

5.56 NATO 75 GR. TAP SBR®

BRASS CASE | NO. 81292

NEW 5.56 NATO 75 GR. FMJ

BRASS CASE | NO. 81283

300 BLACKOUT

Hornady® ammunition provides a cost effective firearms training alternative to the standard TAP® and Critical Duty® loads. Loaded with proven propellants, coupled with high quality bullets, cases, and primers, Hornady® ammunition is designed to deliver point of aim / point of impact comparable to our TAP® and Critical Duty® offerings. Hornady® Ammunition - an economical, high quality solution for Law Enforcement training.

300 BLACKOUT 110 GR. JACKETED FRANGIBLE

BRASS CASE | NO. 80864 | **LEAD FREE** | **SUPPRESSOR SAFE**

300 BLACKOUT 110 GR. FRANGIBLE

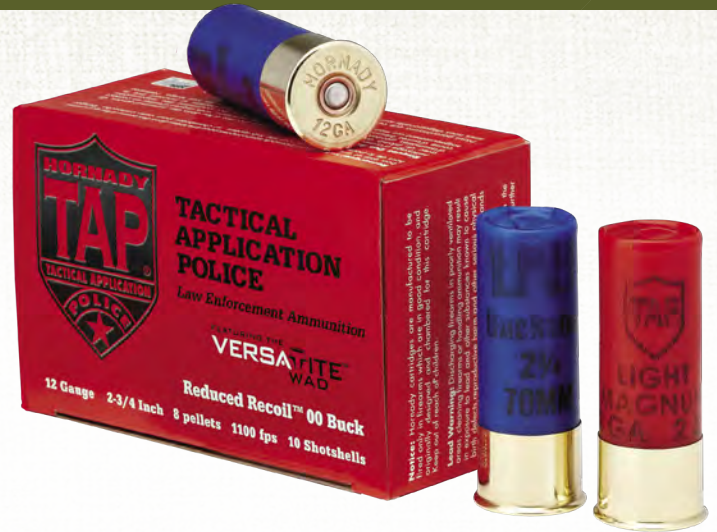
BRASS CASE | NO. 80870 | **LEAD FREE**



SHOTGUN

TAP® 12 gauge shotgun ammunition lives up to the legendary Hornady® name in every way – reliable functioning, consistent performance and tighter patterns without modification to the shotgun.

Hornady® offers multiple loads specially designed for the type of shotgun you use and the situations you face. Both the Reduced Recoil™ (blue) and Light Magnum® (red) loadings in 00 buck and slug offer reliable functioning, consistent performance, and better patterns than traditional shotgun shells through use of specialized wad technology. Our TAP® Entry™ (black) is designed to be utilized for multiple applications – breaching, entry, and training.



00 BUCK

12 GA 2¾" TAP® REDUCED RECOIL™ 00 BUCK

NO. 86265 FEATURING THE **VERSATITE™** WAD

Hornady® TAP® Reduced Recoil™ (blue hull) is a reduced velocity load designed primarily for pump action shotguns. It comes loaded in a blue hull with a load delivering a velocity of 1,100 fps (30" test barrel.)

Firearm: 18½" bbl Remington 870 Police Magnum

Shot Size	Pellet Count	Muzzle Velocity (fps)
00 Buck	8	991



7 Yards | 1.325"

15 Yards | 2.687"

25 Yards | 4.437"

12 GA 2¾" TAP® LIGHT MAGNUM® 00 BUCK

NO. 86275 FEATURING THE **VERSATITE™** WAD

Hornady® TAP® Light Magnum® Buckshot (red hull) is loaded to a velocity of 1600 fps (30" test barrel) to ensure proper functioning in semi-automatic police shotguns. The Light Magnum® Buckshot can also be used in pump action shotguns.

Firearm: 18½" bbl Benelli M1 Super 90

Shot Size	Pellet Count	Muzzle Velocity (fps)
00 Buck	8	1428



7 Yards | 1.875"

15 Yards | 2.75"

25 Yards | 5.187"

FRANGIBLE SLUG

BARE GELATIN



Firearm: 870P
Bullet: 3/4 oz. Frangible Slug
Muzzle Velocity: 1434 fps
Barrel: 18 1/2"
Total Penetration: 12.0"
Max. Cavity: 5.5"
Depth to Max. Cav.: 3.0"
Entry: 1.0"



12GA. FRANGIBLE 3/4 OZ. SLUG TAP® ENTRY™ NO. 86245 | LEAD FREE PROJECTILE

Application: Entry

Hornady® 12 Gauge TAP ENTRY (black hull) is designed to fit a variety of mission applications including entry (limited penetration), breaching, and training. Featuring a 3/4 ounce frangible sintered slug, this round produces wound cavities similar to a 308 Win, yet minimizes the potential for over-penetration. In most cases, a breacher must transition to an alternate weapon before entering a building. TAP ENTRY provides the capability to breach a door and make entry utilizing the same weapon. TAP ENTRY also provides the ability to train on steel silhouettes without concerns for ricochets, because the slug disintegrates upon impact.

Firearm: 18 1/2" bbl 870P

Description	Weight	Muzzle Velocity (fps)
Frangible Slug	3/4 oz.	1575

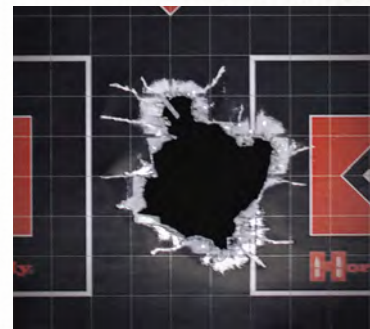
RIFLED SLUG

12 GA 2 3/4" 1 OZ. TAP® REDUCED RECOIL™ RIFLED SLUG NO. 86285

Hornady® TAP® Reduced Recoil™ Rifled Slug (blue hull) is loaded to a velocity of 1350 fps (30" test barrel). This rifled slug is designed to be used in pump action shotguns with smooth bore barrels.

Firearm: 18 1/2" bbl Remington 870 Police Magnum Smooth Bore

Description	Weight	Muzzle Velocity (fps)
Rifled Slug	1 oz.	1350



25 Yards | 2.0"

12 GA 2 3/4" 1 OZ. TAP® LIGHT MAGNUM® RIFLED SLUG NO. 86235

Hornady® TAP® Light Magnum® Rifled Slug (red hull) is loaded to a velocity of 1600 fps (30" test barrel). Reliably functions in smooth bore semi-automatic police shotguns while maintaining SAAMI pressure specifications.

Firearm: 18 1/2" bbl Benelli M1 Super 90 Smooth Bore

Description	Weight	Muzzle Velocity (fps)
Rifled Slug	1 oz.	1600



25 Yards | 2.75"



One of the first responsibilities of owning a gun is properly securing it when not in use. But more than that, protecting your firearms and other valuables just makes sense. Hornady makes it easy with a variety of safes, vaults and accessories for your home, your vehicle or however you travel. By utilizing patented RFID technology, Hornady Security® RAPID® Safes offer the quickest, most dependable access to your firearm while providing unmatched security from unauthorized users.

As a firearms owner, you have many options for storage devices to fit your lifestyle and home. On the following pages, you'll find security products for handguns, rifles and shotguns. Explore the storage options, including products on Snapsafe.com, to see what we have available and determine what will work best for your situation.



Simplify YOUR SECURITY

Access all your Hornady® RAPID® Safes with a single RFIID tag.

No matter the number of RAPID® Safes you own, one tag can open them all. Simply program your preferred RFID tag (watchband, key fob or adhesive decal) then hold over the reader and the safe opens for quick access.

By using RFID technology, there's no need to find a key, register a fingerprint, or remember a combination.

Hornady offers a wide selection of RAPID® Safes, from one and two-gun safes up to the Ready Vault™ that holds up to 8 long guns and 14 handguns.

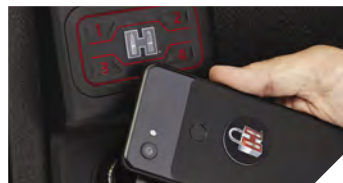
Fast and dependable touch-free entry with patented RFID technology.



Watchband Tag



Key Fob



Adhesive Decal

EVERY RAPID® SAFE COMES WITH MULTIPLE RFID TAGS

Every Hornady Security® RAPID® Safe can be programmed to read up to five different RFID tags.

Various tags and accessories are available. RFID decals can be placed on your phone or any other convenient placement.



***IMPORTANT:** Do not store loaded firearms in any safe or lock box. Follow local, state and federal laws for firearm storage and transport. Check TSA regulations and airline policies before traveling with any portable safe. Check dimensions of your firearm against safe's internal dimensions. Firearm and firearm accessories not included.



RAPiD® Safe Compact Ready Vault™
No. 98196WIFI

Exterior: 52.2"x 10"x 10"*
 (*add 1.7" for handle)
 Interior: 51.8"x 9.8"x 8"
 Weight: 70 lbs.



RAPiD® Safe Ready Vault™
No. 98195WIFI

Exterior: 52.2"x 20"x 15.1"*
 (*add 1.7" for handle)
 Interior: 51.8"x 19"x 12.7"
 Weight: 170 lbs.ç

Ready Vault™ Shelf Kit

For use in the RAPiD® Safe Ready Vault™. 100 pound weight capacity. 18.5"x 10"

No. 98252



Metal Shelf

Designed to fit the RAPiD® Safe Compact Ready Vault™ but compatible with other Square-Lok® products. 25 pound weight capacity. 9"x 6"

No. 98253



RAPiD® Safe Night Guard®

The RAPiD® Safe Night Guard® keeps your handgun as close as your nightstand. RFID technology offers the quickest, most dependable access to your firearm while providing unmatched security from unauthorized users.

No. 98215

Exterior: 12"x 10.5"x 3"
 Interior: 9.2"x 6.9"x 2.2"
 Weight: 18 lbs.



RAPiD® Safe AR Gunlocker

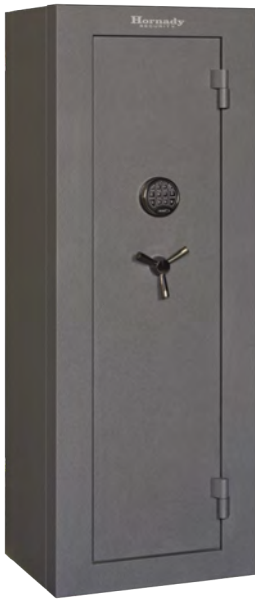
The AR Gunlocker stows neatly under a bed, in a closet or the back of an SUV, providing total security with its fully enclosed design. Available in two sizes, secure up to three tactical-length rifles or shotguns and access them quickly and efficiently, thanks to RFID technology.

No. 98190

Exterior: 42"x 15.25"x 6.75"
 Interior: 40.5"x 13.5"x 5.5"
 Weight: 50 pounds

Holds up to two tactical length rifles.*

*IMPORTANT: Do not store loaded firearms in any safe or lock box. Follow local, state and federal laws for firearm storage and transport. Check TSA regulations and airline policies before traveling with any portable safe. Check dimensions of your firearm against safe's internal dimensions. Firearm and firearm accessories not included.



**Mobilis™ Safe
Single Door
No. 95070**

Exterior: 22"W x 59"H x 18"D*
(*add 2" for handle)
Interior: 18"W x 53.5"H x 14.4"D



**Mobilis™ Safe
Double Door
No. 95071**

Exterior: 34"W x 59"H x 25"D**
(**add 2.6" for handle)
Interior: 30"W x 52.5"H x 21.4"D



**Mobilis™ Safe
Double Door MAX
No. 95072**

Exterior: 46"W x 71"H x 31"D**
(**add 2.6" for handle)
Interior: 42"W x 65.5"H x 27.4"D



**SCAN TO
LEARN MORE**

SEE OUR FULL LINE OF
SQUARE-LOK™
ACCESSORIES
SEE PAGES 39-40



Square-Lok® interior

Mobilis™ Safes

Discover the ultimate solution for safeguarding your valuable firearms, ammo and gear with Hornady Security® Mobilis™ Safes. These safes offer an innovative modular design that ensures you get the security you need when you want. Gone are the days of struggling with moving companies or installers – the Mobilis™ Safes can be transported and assembled piece by piece in any room of your choice. The included tool kit provides everything required for assembly, giving you the power to set up your safe in a matter of minutes.

FEATURES:

- Thick 9 gauge 2-ply steel exterior walls with pry-resistant 3/16" solid steel door and non-breach seal.
- Nine to fourteen 1-inch steel live locking bolts (depending on model).
- Square-Lok® interior organizing system maximizes storage space.
- Metal Square-Lok® shelves and rifle/pistol gun racks can be configured to suit your needs.
- Additional Square-Lok® accessories can be purchased separately.
- Built-in 120V outlet and USB power strip.
- Protective shelf and floor mats.
- 2300°F one-hour Fire Shield protection and heat-activated door seals.
- Durable powder-coated finish in matte grey.
- Stylish black nickel handles and keypad.
- UL Listed digital lock with EMP mechanical key backup.
- Pre-drilled for floor mounting.
- Lifetime warranty.
- Delivered right to your door.
- Manage your personal security code for 100% privacy.

***IMPORTANT:** Do not store loaded firearms in any safe or lock box. Follow local, state and federal laws for firearm storage and transport. Check TSA regulations and airline policies before traveling with any portable safe. Check dimensions of your firearm against safe's internal dimensions. Firearm and firearm accessories not included.



SQUARE-LOK® Accessories

Maximize the space in your safe, gun room or work bench with the revolutionary Square-Lok® modular organizing system. Accessories lock in easily and hold firmly for countless storage configurations. Choose the pieces you need and the arrangement that works best for you.

- 1 Gun Racks**
 There's no dead space with these racks, which store up to six handguns and five long guns in the spaces between. PVC coating protects firearms.
U.S. Patent US11561066
2-Gun No. 95792
4-Gun No. 95793
6-Gun No. 95794
- 2 Rechargeable Gun Safe Dehumidifier**
 Absorb humidity and prevent rust or mildew in gun safes and other enclosed areas. Moisture-control crystals change from blue to pink when unit needs recharging.
No. 95900
- 3 Parts Bin**
 No more misplacing smaller items. This bin keeps small parts organized and close at hand.
No. 95791
- 4 Wire Shelf**
 Constructed of PVC-coated steel. Notched perimeter supports rifle barrels. 25 pound weight capacity. 9" x 9"
No. 95790
- 5 Digital Hygrometer**
 Large touchscreen displays high/low for temperature and humidity in Fahrenheit or Celsius. Install quick-connect bracket on interior door or wall of safe or vault room, or use fold-out stand. Requires two AAA batteries (not included).
No. 95909

SHOP SQUARE-LOK® ACCESSORIES NOW!



***IMPORTANT:** Do not store loaded firearms in any safe or lock box. Follow local, state and federal laws for firearm storage and transport. Check TSA regulations and airline policies before traveling with any portable safe. Check dimensions of your firearm against safe's internal dimensions. Firearm and firearm accessories not included.

SQUARE-LOK® Accessories



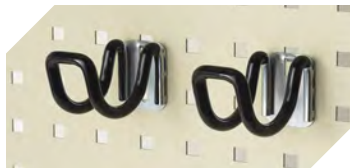
- ① **12" x 12" Metal Shelf**
Weight capacity of 25 pounds when evenly distributed.
No. 95781

- ② **Square-Lok® Drawer**
12" W X 12" D X 6" H
Ball bearing drawer slides provide stable and smooth operations. Capacity of 40 pounds when evenly distributed.
No. 95783

- ③ **Square-Lok® Bin**
12" W x 4.5" D x 4.5" H
Removable foam insert cradles handgun and rifle magazines or remove for larger items like binoculars, tools or other equipment.
No. 95782



- ④ **Square-Lok® Long Gun Horizontal Hook Set**
No. 95786



- ⑤ **Square-Lok® Panels**
Ideal for displaying prized firearms or providing convenient access to tools and gear. Mount vertically or horizontally and adjoin to other panels to build a wall of Square-Lok panels.
12" W X 18" H
No. 95787
18" W X 36" H
No. 95788

- ⑥ **9" x 9" Metal Shelf**
Weight capacity of 25 pounds when evenly distributed.
No. 95780

- ⑦ **Square-Lok® Pistol Rack Single - Vertical**
Designed to hold most handguns in a vertical orientation. PVC coating won't scratch or damage handgun finish.
No. 95784

- ⑧ **Square-Lok® Long Gun Vertical Support Kit**
Patent pending dual-purpose gun rack uses space between barrel rests to accommodate up to four handguns. Includes one 12" x 12" support shelf and one PVC coated barrel rest/gun rack. Support shelf locks into Square-Lok panels with integrated hooks and expanding nut grommets. Deep standoffs provide room for larger diameter scopes and tall turrets.
No. 95785

***IMPORTANT:** Do not store loaded firearms in any safe or lock box. Follow local, state and federal laws for firearm storage and transport. Check TSA regulations and airline policies before traveling with any portable safe. Check dimensions of your firearm against safe's internal dimensions. Firearm and firearm accessories not included.

Accessories

LE T-Shirt

Military Green. 50% Polyester, 25% Cotton, 25% Rayon.

No. 99603

NEW LE Cap

Unstructured black cotton twill.

No. 99266



LE Tumbler

20 oz. insulated stainless steel.

No. 99154

LE Water Bottle

32 oz. Nalgene wide mouth.

No. 99160



LE Patch

Hornady Shield 2.0"W x 2.5"H

No. 99002

LE PVC Patches

Thin Blue Line 2.5"W x 2"H

No. 99003



Thin Green Line 2.5"W x 2"H

No. 99004



HIT® Target Impact Indicator

- Ultra-bright light indicates bullet impact on distant steel targets.
- Visible up to 1000+ yards with naked eye (weather-dependent).
- Easily attaches to target stand out of harm's way with included elastic band.
- Rechargeable using micro-USB.
- Morse code "H-I-T" blinks for impact distinction.
- Accelerometer detects bullet vibrations for activation.

No. 97300 (2 Pack)
No. 97301 (5 Pack)
No. 97300B (50 Pack)



Hornady® LE Sticker Sheet

Multiple stickers on an 8.5" x 11" sheet.

No. 98022



Hornady® Podcast Sticker Sheet

Multiple stickers on an 8.5" x 11" sheet.

No. 98021



Critical Duty® LE Counter Mat

Non-slip backing keeps mat in place. 36"W x 24"H

No. 99149

***IMPORTANT:** Do not store loaded firearms in any safe or lock box. Follow local, state and federal laws for firearm storage and transport. Check TSA regulations and airline policies before traveling with any portable safe. Check dimensions of your firearm against safe's internal dimensions. Firearm and firearm accessories not included.



TEST BARREL BALLISTICS

CRITICAL DUTY®

CARTRIDGE	BULLET	No.	BARREL LENGTH	Velocity (fps)			Energy (ft/lb)		
				MUZZLE	50 yds	100 yds	MUZZLE	50 yds	100 yds
9mm Luger + P	124 gr. FlexLock®	90215	4"	1175	1081	1012	380	322	282
9mm Luger	135 gr. FlexLock® Subsonic	90235	4"	1010	960	918	306	276	253
9mm Luger + P	135 gr. FlexLock®	90225	4"	1070	1008	958	343	304	275
357 Sig	135 gr. FlexLock®	91295	4"	1225	1102	1016	450	364	309
357 Magnum	135 gr. FlexLock®	90515	8"	1275	1150	1059	487	396	336
40 S&W	175 gr. FlexLock®	91375	4"	1010	948	899	396	350	314
10mm Auto	175 gr. FlexLock®	91255	5"	1150	1052	981	523	437	381
45 Auto + P	220 gr. FlexLock®	90925	5"	975	927	887	464	420	384

223 REM

BULLET	No.	Velocity (fps)					Energy (ft/lb)					Trajectory Tables (inches)							
		MUZ	100 yd	200 yd	300 yd	400 yd	500 yd	MUZ	100 yd	200 yd	300 yd	400 yd	500 yd	MUZ	100 yd	200 yd	300 yd	400 yd	500 yd
53 gr. TAP Patrol®	80295	3335	2757	2248	1797	1418	1141	1309	895	595	380	237	153	-1.5	0	-3.1	-13.3	-34.4	-73.1
55 gr. TAP Urban®	83276	3220	2837	2485	2159	1859	1589	1266	983	754	569	422	308	-1.5	0	-2.9	-11.4	-27.5	-53.7
60 gr. TAP Urban®	83286	3110	2749	2417	2108	1823	1867	1289	1007	778	592	443	327	-1.5	0	-3.1	-12.3	-29.3	-56.8
62 gr. TAP® Barrier™	83285	3050	2699	2375	2073	1796	1546	1239	971	751	573	430	319	-1.5	0	-3.3	-12.8	-30.5	-59.0
73 gr. TAP Precision®	83255	2775	2544	2318	2101	1893	1697	1248	1048	870	715	581	467	-1.5	0	-3.9	-14.3	-32.6	-60.6
75 gr. TAP Precision®	80265	2785	2557	2340	2134	1939	1755	1292	1089	912	759	626	513	-1.5	0	-3.8	-14.1	-31.9	-59.1

5.56 NATO

BULLET	No.	Velocity (fps)					Energy (ft/lb)					Trajectory Tables (inches)							
		MUZ	100 yd	200 yd	300 yd	400 yd	500 yd	MUZ	100 yd	200 yd	300 yd	400 yd	500 yd	MUZ	100 yd	200 yd	300 yd	400 yd	500 yd
53 gr. TAP Patrol® (20" Bbl)	81275	3310	2736	2229	1781	1404	1133	1289	881	585	373	232	151	-1.5	0	-3.2	-13.6	-35.1	-74.5
60 gr. TAP SBR® (11.5" Bbl)	81305	2640	2208	1820	1483	1219	1047	928	649	441	293	198	146	-1.5	0	-5.7	-22.1	-54.4	-110.0
62 gr. TAP® Barrier™ (20" Bbl)	8125N	3085	2725	2393	2085	1801	1546	1310	1022	788	598	446	329	-1.5	0	-3.2	-12.6	-30.0	-58.2
70 gr. TAP® Barrier™ (20" Bbl)	81265	2900	2637	2389	2154	1934	1728	1307	1081	887	721	581	464	-1.5	0	-3.5	-13.1	-30.3	-56.8
75 gr. BTHP T2 TAP® (20" Bbl)	8126N	2885	2626	2382	2151	1934	1731	1386	1149	945	771	623	499	-1.5	0	-3.6	-13.3	-30.5	-57.1
75 gr. TAP SBR® (11.5" Bbl)	81295	2310	1965	1654	1388	1179	1042	889	643	456	321	231	181	-1.5	0	-7.6	-28.0	-66.7	-130.3

6MM ARC

BULLET	No.	Velocity (fps)					Energy (ft/lb)					Trajectory Tables (inches)							
		MUZ	100 yd	200 yd	300 yd	400 yd	500 yd	MUZ	100 yd	200 yd	300 yd	400 yd	500 yd	MUZ	100 yd	200 yd	300 yd	400 yd	500 yd
80 gr. TAP Urban®	81615	3020	2788	2569	2359	2160	1970	1620	1381	1172	989	829	689	-1.5	0	-3.0	-11.3	-25.8	-47.8
90 gr. TAP Patrol® (18" Bbl)	81635	2775	2552	2340	2138	1947	1767	1539	1301	1094	914	757	624	-1.5	0	-3.8	-14.0	-31.9	-58.9
106 gr. TAP®	81605	2610	2459	2314	2173	2038	1907	1603	1424	1260	1112	977	856	-1.5	0	-4.3	-15.0	-33.2	-59.7

6.5 CREEDMOOR

BULLET	No.	Velocity (fps)					Energy (ft/lb)					Trajectory Tables (inches)							
		MUZ	100 yd	200 yd	300 yd	400 yd	500 yd	MUZ	100 yd	200 yd	300 yd	400 yd	500 yd	MUZ	100 yd	200 yd	300 yd	400 yd	500 yd
100 gr. TAP Urban®	81515	3200	2978	2768	2568	2376	2192	2274	1970	1702	1464	1253	1067	-1.5	0	-2.4	-9.4	-21.7	-40.1
140 gr. TAP® Heavy Barrier™	81485	2675	2425	2188	1965	1757	1566	2224	1827	1488	1200	959	762	-1.5	0	-4.4	-16.2	-37	-69.1
147 gr. TAP Precision®	81505	2695	2567	2443	2323	2206	2092	2370	2151	1948	1761	1587	1428	-1.5	0	-3.8	-13.4	-29.5	-52.7

300 BLACKOUT

BULLET	No.	Velocity (fps)					Energy (ft/lb)					Trajectory Tables (inches)							
		MUZ	100 yd	200 yd	300 yd	400 yd	500 yd	MUZ	100 yd	200 yd	300 yd	400 yd	500 yd	MUZ	100 yd	200 yd	300 yd	400 yd	500 yd
110 gr. TAP Urban® (16" Bbl)	80885	2370	2089	1830	1594	1386	1215	1372	1066	818	620	469	361	-1.5	0	-6.5	-23.5	-54.2	-103.2
111gr. MonoFlex® TAP SBR® (16" Bbl)	80865	2135	1714	1365	1117	977	887	1123	724	459	307	235	194	-1.5	0	-10.5	-4.00	-97.2	-190.8
190 gr. Sub-X® TAP® Subsonic (16" Bbl)	80895	1050	998	955	918	885	856	465	420	384	355	331	309	-1.5	0	-33.4	-104.9	-217.7	-375.1
255 gr. SUB-X® TAP® Subsonic	80855	1050	979	925	879	839	803	548	477	425	384	350	321	-1.5	0	-34.7	-110.0	-230.4	-400.4

308 WIN

BULLET	No.	Velocity (fps)					Energy (ft/lb)					Trajectory Tables (inches)							
		MUZ	100 yd	200 yd	300 yd	400 yd	500 yd	MUZ	100 yd	200 yd	300 yd	400 yd	500 yd	MUZ	100 yd	200 yd	300 yd	400 yd	500 yd
110 gr. TAP Urban®	80896	3160	2826	2516	2226	1956	1707	2439	1950	1546	1210	934	712	-1.5	0	-2.9	-11.3	-26.8	-51.4
155 gr. TAP Precision®	80905	2785	2589	2401	2222	2050	1886	2669	2307	1985	1699	1446	1224	-1.5	0	-3.7	-13.4	-30.2	-55.4
165 gr. TAP® Heavy Barrier™	80985	2610	2413	2224	2044	1872	1711	2496	2132	1812	1530	1284	1072	-1.5	0	-4.5	-16	-35.9	-65.8
168 gr. TAP Precision® A-MAX®	80965	2680	2494	2316	2145	1981	1825	2679	2320	2000	1715	1464	1242	-1.5	0	-4.1	-14.7	-32.9	-59.9
168 gr. TAP Precision®	80725	2710	2540	2376	2218	2066	1920	2739	2406	2105	1835	1592	1375	-1.5	0	-3.9	-14	-31.1	-56.4
168 gr. TAP® AR™	80715	2670	2501	2339	2182	2031	1887	2659	2333	2040	1776	1539	1329	-1.5	0	-4.1	-14.5	-32.3	-58.5

7.62X39

BULLET	No.	Velocity (fps)					Energy (ft/lb)					Trajectory Tables (inches)							
		MUZ	100 yd	200 yd	300 yd	400 yd	500 yd	MUZ	100 yd	200 yd	300 yd	400 yd	500 yd	MUZ	100 yd	200 yd	300 yd	400 yd	500 yd
111 gr. MonoFlex® TAP SBR® (16" Bbl)	80785	2350	1898	1510	1209	1026	921	1361	888	562	360	260	209	-1.5	0	-8.3	-32.2	-79.9	-160.4
255 gr. TAP® Subsonic (16" Bbl)	80795	1050	988	940	898	862	829	624	553	500	457	421	389	-1.5	0	-34.0	-107.5	-224.0	-387.6

300 WIN MAG			Velocity (fps)					Energy (ft/lb)					Trajectory Tables (inches)						
BULLET	No.	MUZ	100 yd	200 yd	300 yd	400 yd	500 yd	MUZ	100 yd	200 yd	300 yd	400 yd	500 yd	MUZ	100 yd	200 yd	300 yd	400 yd	500 yd
178 gr. TAP Precision®	82045	2960	2788	2622	2462	2308	2159	3463	3071	2717	2396	2106	1843	-1.5	0	-3	-11	-24.8	-45.2

300 PRC			Velocity (fps)					Energy (ft/lb)					Trajectory Tables (inches)						
BULLET	No.	MUZ	100 yd	200 yd	300 yd	400 yd	500 yd	MUZ	100 yd	200 yd	300 yd	400 yd	500 yd	MUZ	100 yd	200 yd	300 yd	400 yd	500 yd
190 gr. Heavy Barrier	82145	3000	2834	2675	2521	2372	2229	3797	3389	3019	2682	2375	2095	-1.5	1.4	0	-6.3	-18.0	-36.0
225 gr. TAP Precision®	81215	2810	2692	2577	2465	2356	2250	3945	3620	3318	3036	2773	2529	-1.5	0	-3.3	-11.9	-26.1	-46.7

338 ARC			Velocity (fps)					Energy (ft/lb)					Trajectory Tables (inches)						
BULLET	No.	MUZ	100 yd	200 yd	300 yd	400 yd	500 yd	MUZ	100 yd	200 yd	300 yd	400 yd	500 yd	MUZ	100 yd	200 yd	300 yd	400 yd	500 yd
307 gr. TAP® Subsonic (16" Bbl)	82275	1050	990	942	901	866	833	752	668	605	554	511	473	-1.5	0	-33.9	-107.1	-223.0	-385.6

338 LAPUA MAG			Velocity (fps)					Energy (ft/lb)					Trajectory Tables (inches)						
BULLET	No.	MUZ	100 yd	200 yd	300 yd	400 yd	500 yd	MUZ	100 yd	200 yd	300 yd	400 yd	500 yd	MUZ	100 yd	200 yd	300 yd	400 yd	500 yd
240 gr. Heavy Barrier™	82315	2900	2747	2600	2458	2320	2186	4482	4022	3603	3219	2897	2546	-1.5	1.6	0	-6.7	-19.2	-39.1
285 gr. TAP Precision®	8235	2745	2630	2519	2410	2304	2200	4768	4378	4015	3676	3359	3064	-1.5	0	-1.8	-7.2	-20.5	-40.3

50 BMG			Velocity (fps)					Energy (ft/lb)					Trajectory Tables (inches)						
BULLET	No.	MUZ	100 yd	200 yd	300 yd	400 yd	500 yd	MUZ	100 yd	200 yd	300 yd	400 yd	500 yd	MUZ	100 yd	200 yd	300 yd	400 yd	500 yd
750 gr. TAP Precision® (36" Bbl)	8275	2810	2722	2637	2552	2470	2389	13149	12342	11576	10849	10158	9502	-1.5	0	-3.2	-11.4	-24.9	-44.2

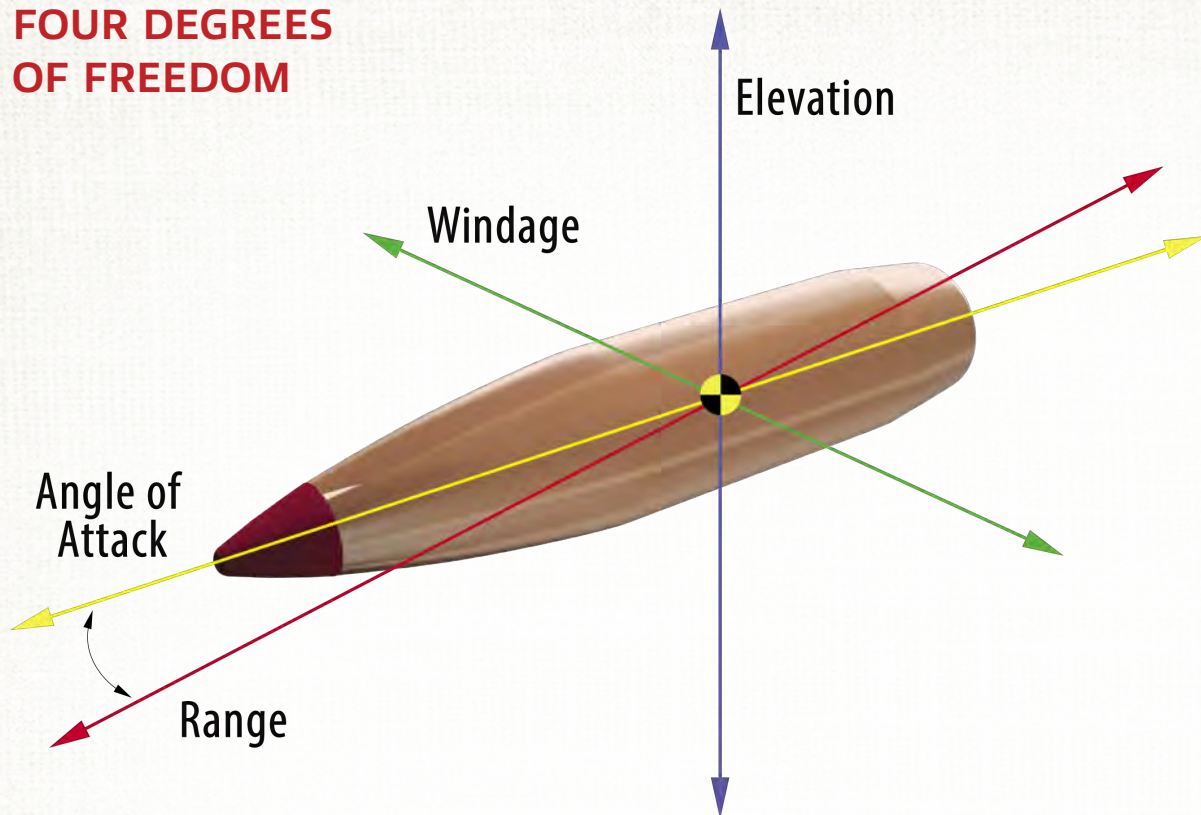
OTM & OTM-A®			Velocity (fps)					Energy (ft/lb)					Trajectory Tables (inches)							
CARTRIDGE	BULLET	No.	MUZ	100 yd	200 yd	300 yd	400 yd	500 yd	MUZ	100 yd	200 yd	300 yd	400 yd	500 yd	MUZ	100 yd	200 yd	300 yd	400 yd	500 yd
6mm ARC	105 gr. OTM-A®	81613	2610	2445	2286	2132	1985	1844	1588	1393	1218	1060	919	793	-1.5	0	-4.3	-15.3	-33.9	-61.4
6.5 Creedmoor	140 gr. OTM-A®	81480	2700	2553	2412	2274	2141	2013	2266	20247	1808	1608	1425	1259	-1.5	0	-3.8	-13.7	-30.2	-54.4
7.62x51	175 gr. OTM-A® Sealed	80988	2580	2402	2231	2066	1910	1761	2586	2241	1933	1659	1417	1204	-1.5	2.3	0	-9.3	-26.7	-53.7
300 Blackout	220 gr. OTM-A® Subsonic	80859	1050	1009	975	945	918	893	539	498	464	436	411	390	-1.5	0	-32.6	-101.8	-209.9	-359.5
338 Lapua Mag	250 gr. OTM	82305	2850	2712	2579	2449	2323	2201	4509	4083	3691	3330	2996	2689	-1.5	0	-3.2	-11.7	-26	-46.7
338 Lapua Mag	300 gr. OTM-A®	82319	2625	2502	2383	2267	2154	2044	4590	4170	3782	3423	3090	2783	-1.5	0	-4.1	-14.2	-31.2	-55.7

HANDGUN TRAINING™				Velocity (fps)			Energy (ft/lb)		
CARTRIDGE	BULLET	No.	BARREL LENGTH	MUZZLE	50 yds	100 yds	MUZZLE	50 yds	100 yds
9mm Luger	115 gr. FMJ	90269	4"	1135	1032	959	329	272	235
9mm Luger	124 gr. Crimplock® Encapsulated	90257	4"	1140	1053	988	358	305	269
9mm Luger	135 gr. FMJ	90238	4"	1010	960	918	306	276	253
9mm Luger	135 gr. Crimplock® Encapsulated	90222	4"	1050	992	945	330	295	268
357 Sig	135 gr. FMJ	91298	5"	1210	1091	1008	439	357	305
40 S&W	175 gr. FMJ	91374	4"	1010	948	899	396	350	314
45 Auto	220 gr. FMJ	90924	4"	900	863	829	396	363	336
9mm Luger	90 gr. Frangible	90230	4"	1300	1124	1011	338	253	204
357 Sig	90 gr. Frangible	91285	4"	1440	1209	1056	414	292	223
40 S&W	125 gr. Frangible	91319	4"	1210	1069	977	406	317	265
45 Auto	145 gr. Frangible	90931	5"	1130	974	878	411	305	248

RIFLE TRAINING™			Velocity (fps)					Energy (ft/lb)					Trajectory Tables (inches)							
CARTRIDGE	BULLET	No.	MUZ	100 yd	200 yd	300 yd	400 yd	500 yd	MUZ	100 yd	200 yd	300 yd	400 yd	500 yd	MUZ	100 yd	200 yd	300 yd	400 yd	500 yd
223 REM	55 gr. SP	80255	3240	2823	2443	2093	1774	1493	1282	973	728	535	384	272	-1.5	0	-2.9	-11.7	-28.5	-56.4
223 REM	55 gr. FMJ	80271	3240	2837	2468	2128	1817	1540	1282	983	744	553	403	290	-1.5	1.4	0	-7.2	-22.1	-47.7
223 REM	55 gr. FMJ-BT	80275	3240	2836	2467	2126	1816	1537	1282	982	743	552	403	288	-1.5	0	-2.9	-11.5	-27.6	-54.9
5.56 NATO	45 gr. Frangible (20" Bbl)	81251	3050	2237	1571	1118	920	805	929	500	247	125	85	65	-1.5	0	-5.8	-26.2	-74.3	-163.5
5.56 NATO	50 gr. Jacketed Frangible (11.5" Bbl)	81302	2940	2433	1980	1585	1269	1062	959	657	435	279	179	125	-1.5	0	-4.5	-17.9	-45.4	-94.4
5.56 NATO	55 gr. FMJ (20" Bbl)	81278	3240	2837	2468	2128	1817	1540	1282	983	744	553	403	290	-1.5	1.4	0	-7.2	-22.1	-47.7
5.56 NATO	60 gr. Jacketed Frangible (20" Bbl)	81259	3150	2485	1911	1435	1109	946	1256	782	462	261	156	113.0	-1.5	0	-4.3	-18.4	-49.7	-109.2
5.56 NATO	60 gr. Non-Expanding (20" Bbl)	81304	3020	2660	2328	2020	1738	1488	1215	943	722	544	402	295	-1.5	0	-3.5	-13.4	-31.9	-62.0
5.56 NATO	75 gr. TAP SBR® (20" Bbl)	81292	2310	2105	1911	1728	1560	1408	888	738	608	497	405	330	-1.5	0	-6.4	-22.3	-49.9	-91.8
5.56 NATO	75 gr. FMJ (11.5" Bbl)	81283	2385	2161	1949	1751	1569	1405	947	777	632	511	410	329	-1.5	0	-6.0	-21.1	-47.6	-88.3
300 Blackout	110 gr. NTX® Jacketed Frangible (16" Bbl)	80864	2080	1726	1422	1186	1036	942	1057	728	494	344	262	217	-1.5	0	-10.3	-38.0	-90.4	-175.1
300 Blackout	110 gr. Frangible (16" Bbl)	80870	2375	2094	1834	-	-	-	1375	1071	623	-	-	-	-1.5	3.2	-0	--	--	--



FOUR DEGREES OF FREEDOM



WHY 4DOF®?

Modern sniping and long-range shooting demands have surpassed the capabilities of traditional Ballistic Coefficient (BC)-based calculations. While custom drag modeling has addressed some of the limitations of BC, it still falls short in accurately modeling the full dynamics of a bullet in flight.

As a bullet travels toward its target, its nose is rarely perfectly aligned with its trajectory throughout the entire flight. Instead, the bullet exhibits “wobbling” motions, known as precession and nutation, around its flight path. This misalignment is quantified as the “angle of attack,” which represents the angular difference between the bullet’s orientation and its trajectory. Any angle of attack introduces additional

forces—beyond drag—that act on the bullet and influence its path. To accurately predict a bullet’s trajectory, these forces must be accounted for in the modeling process.

The 4DOF (Four Degrees of Freedom) bullet library goes far beyond the limitations of BC and even custom drag profiles. Each bullet is characterized by over 400 unique properties, including mass, inertial characteristics, drag coefficient (Cd) versus Mach number, and other aerodynamic factors. This advanced modeling provides a far more precise representation of a bullet’s flight dynamics compared to using a single BC value or a custom drag profile that ignores additional forces acting on the bullet.

Discover the cutting-edge advantage of the Hornady Ballistic Calculator with 4DOF®, tailored to meet the precision demands of law enforcement professionals. With an entire playlist of informative videos, you can explore how 4DOF® offers unmatched accuracy and reliability in the field.

Scan the QR code or visit HORNADY.COM/QR/4DOF-OVERVIEW to dive into the details and experience the difference 4DOF® can make.



BULLET LIBRARY

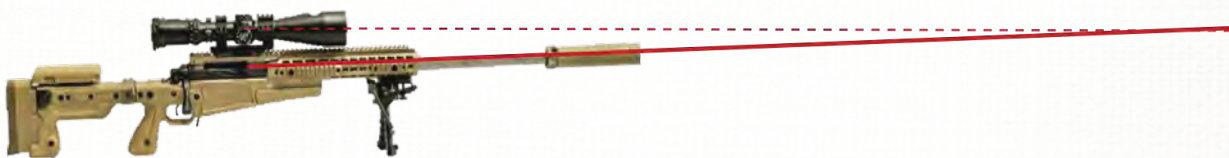
Choose your bullet from an extensive library that includes not only Hornady bullets but also a wide range of options from other manufacturers. With over 400 unique values available for each bullet—such as mass, aerodynamic properties, and drag coefficients—this tool ensures precise trajectory calculations tailored to the specific projectile you select

MUZZLE VELOCITY

No need for muzzle velocity “truing.” Simply input the measured muzzle velocity, and the calculator accounts for temperature effects using a Temperature Sensitivity Factor (TSF) derived from testing or selected from a propellant library. This eliminates guesswork and enhances accuracy in varying conditions.

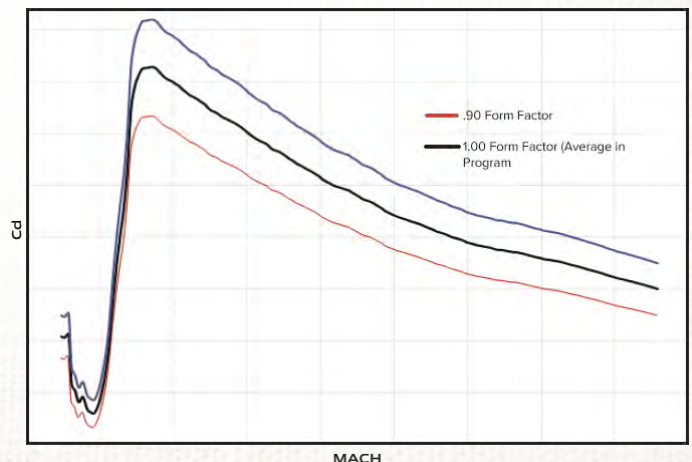
ZERO ANGLE

An alternative to traditional zero range, Zero Angle calculates trajectory based on the barrel’s launch angle. By establishing a fixed zero angle, users can maintain consistent accuracy without the need to re-zero, regardless of environmental changes or shooting conditions.



AXIAL FORM FACTOR

Fine-tune bullet drag to match the unique characteristics of your barrel and muzzle device. Adjustments to the Axial Form Factor can be made at any distance (400–800 meters recommended) without requiring transonic or subsonic conditions. This ensures an optimal match between the calculator and real-world performance.





PO Box 1848
 Grand Island, NE 68802
 1-308-382-1390
 Fax: 308-382-5761
www.hornadyLE.com



THE **HORNADY**
PODCAST

New Episodes Released Every Week!

We've got some of the biggest names in the industry as well as the leading innovators of bullet technology locked, loaded and ready to deliver the goods on the topics that interest you most.

POPULAR EPISODES

EP.8 300 PRC

EP.12 6mm ARC

EP.64 Terminal Ballistics

WATCH, LISTEN, AND SUBSCRIBE AT HORNADY.COM/PODCAST ►►

FBI PROTOCOL & AMMO SELECTION

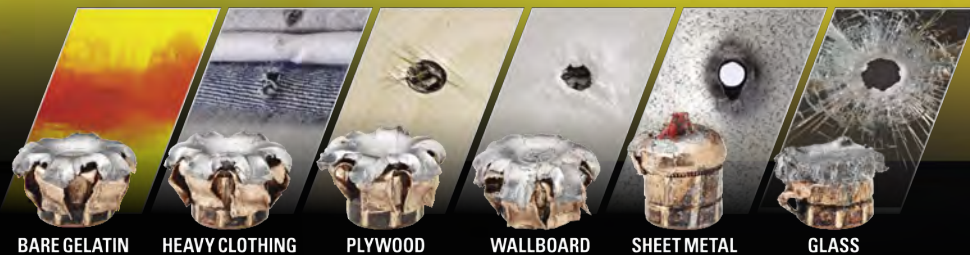
DEMONSTRATIONS

**CONNECT WITH
 YOUR DISTRIBUTOR**



Find out about upcoming training events, specific pricing and product availability.

◀ HORNADYLE.COM/DEMOS



BARE GELATIN

HEAVY CLOTHING

PLYWOOD

WALLBOARD

SHEET METAL

GLASS