

44-40 Winchester (Rifle)

Rifle:	Rossi 92 SRC	Bullet Diameter:	0.427"
Barrel:20", 1 in 16" Twist	Maximum COL:	1.592"
Case:	Hornady/Frontier	Max. Case Length:	1.305"
Primer:	Federal 150	Case Trim Length:	1.295"

Frank C. Barnes, late author of the encyclopedic *Cartridges of the World*, confers an interesting accolade on the 44-40 Winchester, in his view one of the greatest of American cartridges. "It is said that it has killed more game, large and small, and more people, good and bad, than any other commercial cartridge ever developed."

The 44-40 was one of the early cartridges to be chambered in two different types of firearms. Winchester introduced it in its Model 1873 lever-action, and Colt soon followed with revolvers for the 44-40. A widely popular cartridge, it was manufactured by most American gun makers in a variety of different rifles and handguns. Foreign manufacturers offer it today in Winchester and Henry replicas.

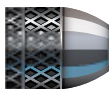
The 44-40 Winchester began its career as a blackpowder cartridge but performs at its best with smokeless powder loads in strong, modern actions. As a cartridge which can take deer at short ranges, it is as effective today as it was a century and a quarter ago.

Time takes its toll, however. The popularity of the 44-40 Winchester in rifle chamberings was jeopardized by the development of the 30-30 Winchester. Its role as an effective, potent round for revolvers was diminished with the appearance of the 357 and 44 magnums seven plus decades later. It remains an excellent cartridge, one which only handloaders can load to its full potential.

205 GRAIN BULLETS

SECTIONAL DENSITY:
DIAMETER:

0.161
0.427"



205 gr. COWBOY™

(Discontinued)

Item No. 11208

C.O.L.: 1.570"

G1 B.C.: 0.123

POWDER	VELOCITY (FPS – feet per second)					
	850	900	950	1000	1050	1100
TITEGROUP	3.6 gr.	4.0 gr.	4.4 gr.	4.8 gr.	5.2 gr.	
AMERICAN SELECT	4.2 gr.	4.7 gr.	5.1 gr.	5.6 gr.		
GREEN DOT	4.4 gr.	4.9 gr.	5.4 gr.	5.9 gr.	6.3 gr.	
Trail Boss	4.5 gr.	5.0 gr.				
WIN 231	4.7 gr.	5.1 gr.	5.6 gr.	6.0 gr.	6.4 gr.	
HP-38	4.9 gr.	5.2 gr.	5.6 gr.	5.9 gr.	6.3 gr.	
UNIQUE	5.1 gr.	5.5 gr.	5.9 gr.	6.2 gr.	6.6 gr.	7.0 gr.
UNIVERSAL	5.8 gr.	6.1 gr.	6.4 gr.	6.6 gr.	6.9 gr.	7.2 gr.
IMR 800 X	5.9 gr.	6.3 gr.	6.7 gr.	7.1 gr.	7.5 gr.	7.9 gr.
VIHT N-340	6.4 gr.	6.7 gr.	7.0 gr.	7.2 gr.	7.5 gr.	

Create custom ballistic tables using our online calculators at hornady.com/ballistics

44-40 Winchester (Rifle)